



OFFICIAL NOTICE AND AGENDA
of a meeting of a City Board, Commission, Department
Committee, Agency, Corporation, Quasi-Municipal
Corporation, or Sub-unit thereof.

A Meeting of Wausau Water Works Commission will be held in the
Council Chambers, 1st Floor City Hall, Wausau, WI 54403 at 11:00 a.m. on
Tuesday, September 2, 2025.

Members: Doug Diny (President), Jim Force, Sarah Watson, Deb Hadley, Peter Gelhar

AGENDA

1. Approve Minutes of August 5, 2025 Meeting.
2. Director's Report on Utility Operations
 - Sewer Penta Study
 - Wastewater Update on Washington Street Siphon Replacement
 - Wastewater Update on Headworks Screening Project
 - Wastewater Update on Cherry Street Lift Station
3. Discussion and Update on Solar Array Project.
4. Discussion on Utility Financials Update through July 2025.
5. Discussion and Possible Action Approving Wage Recommendations.
6. Discussion and Possible Action Approving the Sole Source Purchase of Magnesium Hydroxide Chemical by Midwest Chemical and Equipment.
7. Discussion and Possible Action Approving the Purchase of a UTV and Golf Cart with Funds Received from the Sale of Three General Fixed Assets Sold at Integrity Auction.
8. Discussion and Possible Action Approving/ Setting PFAS Target Levels and GAC Replacement Schedule.

Adjourn.

Next meeting scheduled for **October 7th, 2025 @ 11:00 AM.*

Signed by: /s/ Doug Diny, Mayor
Presiding Officer or Designee

THIS NOTICE POSTED AT CITY HALL AND EMAILED TO CITY PAGES AND DAILY HERALD: August 29th, 2025 at 8:45 a.m.

This meeting is being held in person. Members of the public who do not wish to appear in person may view the meeting live over the internet, cable TV, Channel 981, a video is available in its entirety and can be accessed at <https://tinyurl.com/wausaucitycouncil>. Any person wishing to offer public comment not appearing in person may e-mail gina.vang@wausauwi.gov with "Water Commission Public Comment" in the subject line prior to the meeting start. All public comment, either by email or in person, will be limited to items on the agenda at this time. The messages related to agenda items received prior to the start of the meeting will be provided to the Chair.

In accordance with the requirements of Title II of the Americans with Disabilities Act of 1990 (ADA), the City of Wausau will not discriminate against qualified individuals with disabilities on the basis of disability in its services, programs or activities. If you need assistance or reasonable accommodations in participating in this meeting or event due to a disability as defined under the ADA, please call the ADA Coordinator at (715) 261-6622 or ADAServices@ci.wausau.wi.us to discuss your accessibility needs. We ask your request be provided a minimum of 72 hours before the scheduled event or meeting. If a request is made less than 72 hours before the event the City of Wausau will make a good faith effort to accommodate your request.



Minutes of August 5, 2025

A meeting of the Wausau Water Works Commission was called to order at 11:00 a.m. in City Hall on Tuesday, August 5, 2025. In compliance with Wisconsin Statutes, this meeting was posted and receipted by the Wausau Daily Herald on August 1, 2025.

Members Present: Commissioners Watson, Hadley, Gelhar

Excused Members: President Diny, Force

Others Present: Eric Lindman, Scott Boers, Ben Brooks, MaryAnne Groat, Lisa Nowak, Susan Wojtkiewicz/Donohue, Tonia Westphal/ClarkDietz

1) Approve Minutes of July 8, 2025 Meetings.

Watson motioned to approve minutes. Seconded by Hadley.

Motion carried 3-0.

2) Director's Report on Utility Operations.

Lindman highlighted the 2025 funding and loan is closing, tentatively scheduled for September. Proposed 2026 funding attached page 10 of packet, Community Infrastructure Partners is presenting at next week's August 12 council meeting to provide 2025 updates and what we're projecting for 2026 possible funding for the city council to consider in the budget process for loans and principal forgiveness. In 2026, we're getting about \$12 million in principal forgiveness, \$7 million in loans, those are decisions coming forward which the commission would be involved in. Force was asking about energy audits, he's not here today but I haven't seen any grants for doing energy audits. Focus on Energy was involved in both our water and wastewater treatment plant during construction with types of equipment installed to ensure the utility received rebates and our design engineers reviewed products regarding efficiency. Our facilities are new and running with equipment that's efficient but as we move through operations, there will be some operational efficiencies that the operators may find in the next couple of years.

Watson questioned in missing out on the ARPA funding with the solar array project, if there were any other fundings since the neighborhood landed on a good compromise?

Lindman replied the solar project was proposed in the capital budget for 2026, the tax credit is still available between 30%- 50% depending on what the city is eligible for at the time the work is constructed, we don't know future of those but in 2025 they're in place, we'll know more at end of fiscal year for the feds if those tax credits are going to carry through and for how long. What we proposed in 2026 budget was cost for design and engineering and bidding of that project for 2027 construction, anticipating 12-16-week lag time once we order panels. CIP committees were positive about budgeting for this.

Hadley questioned if we've always contracted projects or if we did most of our work internally and what rock homes were?

Lindman replied it depended on the project complexity, we don't do lift stations in house, we contract out the design of those, the design engineer covers the inspection and submittals as they're familiar with the specifications. Projects we do in house are all our street projects, water

and sewer, distribution and collection projects but a lot of the specialty projects with facilities and pumps/hydraulics we don't have staff that specializes so it's contracted out. Rock homes are locations where there's shallow rock needing to be removed that adds cost to the project, we either blast, use rock hammers or rock drilling to get through.

Director's Report Placed on File.

3) Discussion and Possible Action Approving Contract Amendment with Clark Dietz for the Final Design, Bidding and Construction Oversight of the Crocker Street Lift Station Upgrade for 2026.

Lindman summarized Crocker Street lift station is next in line for construction. Clark Dietz brought these projects to 90% design and as we budget for funding on the construction and relocation/rehab of them, we'll work with Clark Dietz for the rest of that project to fruition. This is an amendment to their existing contract, total cost of \$140,800, final engineering \$21,500, bidding services \$5,400 and construction management observation \$113,900.

Hadley motioned to approve the Crocker St. lift station design completion by Clark Dietz contract. Seconded by Gelhar.

Motion carried 3-0.

4) Discussion and Update on Recruiting, Retention and Related Staffing Information.

Lindman began this is the continuation of last month's information. Through discussion with HR director, we've put together potential risks and results for the utility of not having adequate staffing, not being able to retain, consequences and risks, why it's important to keep this at the forefront to find options and decisions to make improvements. I've included some budget information from 2022, both the budget impacts for addressing our current staff and the addition of staff moving into 2026, each utility has their own enterprise fund, so that's broken out to drinking water and wastewater. These are estimated numbers at this point but it gives the idea of the impacts to the budget moving forward, so about 1% for reclassifications and 1.5% for adding staff. I would like to bring some recommendations forward in September for the commission to act on as it relates to these, it's something that would be effective immediately, then we'd budget accordingly for the 2026 budget. These will be updated and will work with HR Director if there's any additional questions or items you'd like to see.

Nowak summarized her philosophy on compensation. The compensation part from a monetary perspective is important but looking at the numbers this morning, when we speak about formal recommendations, one thing to focus on is employee experience and tacit knowledge that has historically ran out the door when people leave. Tacit knowledge refers to the kind of knowledge that's difficult to transfer to another person by means of writing or verbalizing. Looking at the overall tenure distribution of the utility, not in your packet but will be in the recommendation that we'll formally give, all our most tenured employees are approaching retirement age, we have a big group of people making up the bulk of our employees, their tenure averages 5 years when looking at the upper edge scale of 20 years. As people leave, we lose that knowledge. We've paid over \$67,000 in overtime, it's about 1,600 hours, if you extrapolate to the end of the year, it's about \$130,000 paid in overtime and 3,200 hours, if you think of supplementing that with the employees it would be more for the overhead but the one thing you're getting with adding FTE's is that tacit knowledge. The people ready to retire could pass that baton and start building that middle management that we are missing today. My recommendation would be to support additional FTE's and increase the compensation amount from an hourly basis and we don't know what that number is just yet but wanted you to understand when we meet next month. If you have questions, I'm here, send me an email, we'll be working together to solve this issue.

Hadley requested copy of operating budget.

Linman replied yes, we'll put that together with Finance and send it out.
No Action Taken.

5) Discussion and Possible Action on Setting PFAS Target Levels and GAC Replacement Schedule.

Lindman provided background when PFAS came to light, there are different rules in place between Environmental Protection Agency (EPA), the Department of Natural Resources (DNR) and Department of Health Services (DHS), there's 3 different set values which is part of the struggle for municipalities. We installed a treatment process, Granular Activated Carbon (GAC), for PFAS removal that removes it to non-detect levels but at a cost. Depending on what level of PFAS is tolerable in the water will depend on the cost and how often we must replace that GAC. The EPA has a recommendation of 4 parts per trillion (ppt) but that's not enforceable until 2031. The DNR has an enforcement level of 70ppt, the DHS with the State has a recommended level of 20ppt. Depending on what you're looking at, these numbers have been bouncing around. We're bringing this forward, Wojtkiewicz from Donohue is here to present but we're looking for the commission to consider what levels we should be looking for that would trigger the utility to change out of the GAC that is about \$1 million every time we change it. It's been in place for 9 months but we are starting to see breakthrough on the carbon. We're still at non-detect levels; we have a lead bank and lag bank but the lead bank is bleeding out, we may start seeing some breakthrough into the distribution system.

Wojtkiewicz presented slides in packet starting page 19, see [Video](#) at 18:50.

Lindman summarized because it's such a significant cost, we want the commission involved in determining what triggers a GAC change. When we were going through this initially, there was significant public input, people were nervous, it caused anxiety in the public, a lot of this was the uncertainty of where these levels were going to fall, where regulatory agencies were going to require us to be. It was challenging trying to determine which type of process to design and install. With all the discussions we've had, we followed the right process, it's just our operating costs if we start replacing this more than once a year, it becomes very significant. Because this is new, we're kind of leading this effort on the change outs, I'll preface this as well, a decision doesn't have to be made today and next month we could revisit this but we'll need a decision so that we know from our operations what we need to plan for.

Boers stated the plant operates in a lead/lag configuration and current staffing levels would probably allow 1 vessel a month for GAC replacement, that will give us security for getting safe samples. That's where we'd run into issues, the initial startup had 1 vessel that came back unsafe and there's an extensive process with a caustic soak to sanitize the vessel, this would give us leeway cushion as far as getting it scheduled, handled efficiently, so if we're looking at 6 months, we're looking at being at 4ppt in the next 3 to 4 months.

Wojtkiewicz reiterated for a couple of the vessels, looking at 5 and 6 seem to be the mass transfer zone because it's moving through them most quickly or they've gotten the most loading. We're looking at 2 to 3 months for the 2nd vessel.

Boers advised the commission that operationally we've split these vessels into 3 groups into 1,2,3,4,5, and 6. Different volumes of water in the groups will keep steady numbers as we're changing those over. If we start in 2 to 3 months, we should start looking at this now and how we want to bid this out, work on those bid documents and get the best numbers from a supplier. When we hit the 4ppt on either 5 or 6, then start that process if that's what the commission wants to do, our recommendation would be to go to that 4ppt because we're going to be regulated at 4ppt so that's probably going to be the best information we can get as to how long it takes us to get there. We'll want to look at staying under 20ppt, that is the only commitment that we made with the commission, if we load lead and lag at 20ppt we're going to have to replace both of those

to get down to that 4ppt again so a little savings now might cost us more in the future.

Wojtkiewicz reiterated you could get to a point where your lag bed is fully loaded with PFOA/PFAS if you let it go too long, then you'd end up replacing both vessels in the pair at the same time because you've lost the treatment capacity from it, you're not necessarily saving anything right now by waiting because you'll have to replace it eventually.

Hadley questioned who determines what standards we're utilizing, who decides that? We're well under the PFAS level, how did we get to this with \$1 million/year to change out this carbon when we're still within their criteria and who decides with these 3 entities? These are all independent agencies so EPA can't tell DNR can't tell State, everyone has their own opinion on what's clean.

Lindman replied yes, this is all in our operating budget, we have a grant from the EPA for our 1st change out and a portion left for a 2nd change out, we have \$1.7 million considering \$1 million for the 1st change out and the remaining for the 2nd.

Boers provided more background, at one point DHS suggested to DNR that they should set their levels at 20ppt. DNR didn't adopt that 20ppt, they adopted 70ppt but DNR was having municipal water systems send out letters and publicly notifying if they were over 20ppt. Right now, that's what we are asking of the commission. The EPA rule was going to go in place in 2027 and that was when compliance was going to be required but with the change in EPA, they decided to move that out to 2031. We were at 30 to 40ppt in our wells, our raw water and that's where we struggled with the 70ppt for the State and then DHS' recommendation of 20ppt because we were between these numbers, so we were under that State level but over on the notification level by DHS, then EPA came out recommending 4ppt, we were never going to meet that.

Lindman advised the commissioners that the drinking water is regulated by 3 entities, the EPA, DNR and PSC, in the realm of this situation, the DNR has stated if you exceed the 20ppt, you'll have to provide public notice, we'll want to avoid that because it creates anxiety in the public but we know that at some point in the future, we're likely going to be regulated at 4ppt. The EPA has extended that but they are likely going to adopt that. Then the DNR will in turn have to adopt that. The idea is, if we wait until there is 4ppt in the distribution system, we don't have to notify anyone but that would be our internal trigger limit to say we need to schedule the replacement of the carbon, if we never want to reach the 4ppt then we'll have to replace sooner which will be more replacements at a cost. It would be beneficial for us to gather that data over time for when we are reaching that 4ppt, if that's going to be our regulatory Maximum Contaminant Limit (MCL) that will help us in the future in determining when we replace the carbon in these vessels. These are some of the challenges that we go back and forth on, if there's nothing established in place, that becomes the frustrating point, which numbers we are going to effectively use at this point in time. The \$1.7 million was provided through congressionally directed spending, that's ours, it's not going away but it's a 1x thing. We're building that in our operating budget, that \$1.7 million gives us the opportunity to do that but I don't want to give you the impression that over the next 2 to 3 years we aren't going to be looking at the rates again as everything's going up and that's just the reality, it's just a matter of how much and hopefully we're able to mitigate much of that.

Hadley questioned Fluoro-sorb.

Wojtkiewicz mentioned the alternative media was Fluoro-sorb, it's not approved and has not been used in Wisconsin but that's something that could be examined and we'll have to figure cost savings, everything seen so far indicates it's less expensive. It's bentonite clay and mined in the US and some of the carbon comes from overseas so it makes a difference in costs. The reactivated carbon cost savings is reflected by not bringing in new carbon, you're reusing it. Next month, we'll have additional data and we can also refine some cost estimates if that would be helpful. With Fluoro-sorb, we'd probably have to pilot test and that takes about a year. The other

options mentioned, slightly different carbon would have a different formulation but if it's approved by the National Sanitation Foundation (NSF), we could use it.

Watson requested time to absorb this data and discuss an acceptable level at the next meeting. She questioned whether testing was started on alternatives or anything else that we could substitute into our vessels and how long testing takes or if we could use that if it's potentially saving costs.

Lindman stated we could start piloting if you'd like but it's not approved for use yet. If it did get approved for use then we would at least know that it works with our water chemistry, maybe we'll have discussions on when they'll consider approval.

Brooks stated one thing to keep in mind, Wastewater will be receiving their WPDES Discharge permit soon. Within that new permit term, the first 2 years we'll be doing PFAS testing on the effluent discharged into the Wisconsin river, if we don't replace the GAC and go upwards of that 20ppt, it may impact our test results and throw us into a minimization plan, we have to keep that in mind when determining those numbers on the water side.

Gelhar appreciated the information and time to review what's been provided and requested to tour the facility in person.

Boers replied we'll work out a date that would work for you guys, we'd have to notify for a possible quorum but I'd appreciate that. Lindman replied, "we'll reach out to you."

No Action Taken.

6) Adjourn.

Watson motioned to adjourn. Seconded by Hadley.

Motion carried 3-0.

Link to view meeting in its entirety: <https://tinyurl.com/wausaucitycouncil>

Gina Vang, Recording Secretary

S:\WaterWorks\Common\WaterCommission\2025\September\WWWC_20250805_Minutes.doc.



MEMORANDUM

TO: President Diny
Commissioner Force
Commissioner Watson
Commissioner Hadley
Commissioner Gelhar

FROM: Eric Lindman, P.E.
Director of Public Works & Utilities

SUBJECT: Director's Report – September 2025

Sewer Penta Study – Attached is the study conducted in 2019-2020. Chemical grouting was completed on one section of the sewer interceptor and the remaining sewer pipe is under consideration for full replacement. During this time discussions were made with Wauleco about the issue with Penta leaching into the sanitary sewer. Further work may be done and necessary capital projects may be needed if Penta is found in the sanitary sewer. Currently, we have not been doing any additional testing but further testing may be done should the commission want staff to continue to monitor this area of sewer. Replacement of the pipe will be extensive and expensive and due to the potential of the contaminated groundwater leaching there should be discussions related to responsibility of costs as Wauleco is responsible for the Penta in the groundwater and the cleanup. *See attached.*

WASTEWATER DIVISION

1. **Washington St. Siphon replacement update:**
 - Start-up of the lift station occurred on August 19, 2025, and is in operation. Remaining items: SCADA communications need to be tested and verified with plant staff.
 - Final punch list needs to be created and list items resolved by the contractor.
2. **Headworks Screening project update:**
 - Ahern & subcontractors mobilized June 16, 2025. Substantial Completion date of October 15, 2026. Final Completion date of November 15, 2026.

- Project continues to move along smoothly.

3. Cherry St. Lift Station project update:

- Contractor to mobilize September 8, 2025, Substantial Completion date of October 24, 2025. Final Completion date of November 21, 2025.

From: [Ben Brooks](#)
To: [Eric Lindman](#)
Subject: FW: Question about 2020 Clark Dietz Sewer Study
Date: Monday, August 25, 2025 2:22:53 PM
Attachments: [image001.png](#)
[image002.png](#)
[image003.png](#)
[image004.png](#)

Eric, below is the LOD/LOQ explanation from John Larson, Badger Labs President and owner.

Thank you,

BEN BROOKS
Superintendent
Wausau Waterworks -Wastewater
430 Adrian Street
Wausau, Wi. 54401
Office: 715-261-6941
Email: Ben.Brooks@wausauwi.gov



From: John Larson <JLarson@badgerlabs.com>
Sent: Monday, August 25, 2025 1:48 PM
To: Ben Brooks <Ben.Brooks@wausauwi.gov>
Cc: Kevin Fabel <Kevin.Fabel@wausauwi.gov>
Subject: RE: Question about 2020 Clark Dietz Sewer Study

Ben,

The labs that have analyzed Wausau's wastewater for Pentachlorophenol reference methods SW8270 and EPA 625, both methods are intended for the analysis of Acid/Base Neutral Semi-Volatile compounds that Pentachlorophenol falls into. The limits of detection (LOD) for these methods depend on the instrumentation and methods used by the labs, the dilution factor determined at time of analysis and the extraction process. The varying LODs on reports dating back to 2019 would be a result of a combination of those factors. For example, if a lab receives a sample of wastewater that is cloudy or has what looks to be suspended particles in it, they may choose to do a 3x/5x/10x dilution to protect the instrument from contamination and to ensure method QC requirements are met during analysis. When a dilution is performed, it will increase the LOD of that specific analysis. Synergy Environmental and ALS Global are the labs that we chose for subcontracted lab analysis of Pentachlorophenol. The instrumentation and methods used, and subsequently the LODs reported for that analysis are determined by the sub lab to achieve the lowest LOD that passes all QC requirements, and not by direction from of anyone at the City of Wausau. Hope this helps. Any questions let me know.

Thank you,

John H. Larson

President/Owner

Badger Laboratories, Inc.

501 West Bell St., Neenah WI 54956

Ph: 920.729.1100 | 800.776.7196 | Cell: 920.915.9359



CONFIDENTIALITY NOTICE: This e-mail, including any attachments, may contain confidential, privileged and/or proprietary information which is solely for the use of the intended recipient(s). Any review, use, disclosure, or retention by others is strictly prohibited. If you are not an intended recipient, please contact the sender and delete this e-mail, any attachments, and all copies.

From: Ben Brooks <Ben.Brooks@wausauwi.gov>
Sent: Monday, August 25, 2025 11:55 AM
To: John Larson <JLarson@badgerlabs.com>
Subject: RE: Question about 2020 Clark Dietz Sewer Study
Importance: High

You don't often get email from ben.brooks@wausauwi.gov. [Learn why this is important](#)

John, did you have a chance to review this email yet?

I'd like to have your formal explanation asap so I can forward onto my boss, Eric Lindman.

Please let me know.

Thank you,

BEN BROOKS
Superintendent
Wausau Waterworks -Wastewater
430 Adrian Street
Wausau, Wi. 54401
Office: 715-261-6941
Email: Ben.Brooks@wausauwi.gov



From: Ben Brooks
Sent: Thursday, August 21, 2025 2:05 PM
To: John Larson <jlanson@badgerlabs.com>
Subject: FW: Question about 2020 Clark Dietz Sewer Study
Importance: High

Hi John, below is the email I was referring to along with the attached snippet for reference.

Tom had questioned the different methods along with the variations of LOD and LOQ's.

If you could please review and write a formal explanation to answer his questions that would be appreciated.

Wausau Wastewater does NOT have an effluent limit for Penta in its WPDES. The limit I was referring to is the actual limit conc. That the company that has the contamination can discharge into City Sewer. Sorry about that.

Please let me know if you have any questions.

Thank you,

BEN BROOKS
Superintendent
Wausau Waterworks -Wastewater
430 Adrian Street
Wausau, Wi. 54401
Office: 715-261-6941
Email: Ben.Brooks@wausauwi.gov



From: Tom Kilian <wausau1852@protonmail.com>
Sent: Thursday, August 21, 2025 12:17 PM
To: Eric Lindman <Eric.Lindman@wausauwi.gov>
Subject: RE: Question about 2020 Clark Dietz Sewer Study

One last question, Eric, after looking at the penta manhole lab data from 2019 and 2022. Was there a specific rationale or reason for the City changing the lab method and using a less sensitive Level of Detection (LOD) to analyze the post-fix confirmation sample in 2022?

I attached screen snippets of lab reports from 2022 and 2019 to indicate what I am referring to.

Thanks,
Tom

On Thursday, August 21st, 2025 at 9:25 AM, Tom Kilian <wausau1852@protonmail.com> wrote:

Thanks for providing this info and map, Eric.

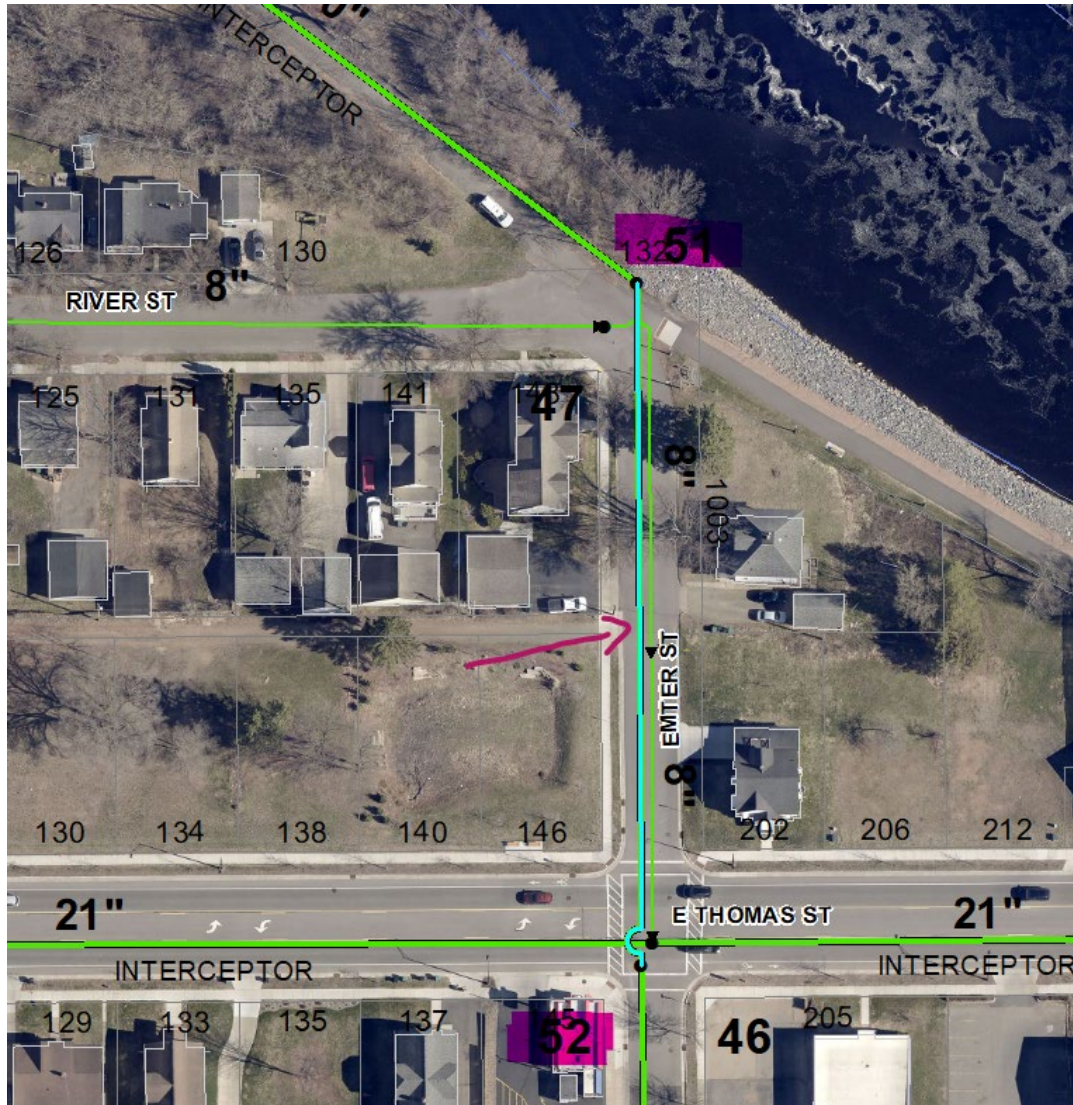
Tom

On Wednesday, August 20th, 2025 at 1:49 PM, Eric Lindman

<Eric.Lindman@wausauwi.gov> wrote:

Tom,

The area we did work on was the 30 inch interceptor line that runs on Emter St between River St and Thomas St or manhole 51 to manhole 52 is the section of pipe that had joints grouted.



Eric Lindman, P.E.

Director of Public Works & Utilities City of Wausau

407 Grant St.

Wausau, WI 54403-4783

P: 715-261-6745

C: 715-292-2606

From: Tom Kilian <wausau1852@protonmail.com> **Sent:** Wednesday, August 20, 2025 9:37 AM

To: Eric Lindman <Eric.Lindman@wausauwi.gov> **Subject:** RE: Question about 2020 Clark Dietz Sewer Study

Thank you for letting me know, Eric. Does there happen to be a map or diagram showing the locations where grouting of the joints occurred? (in terms of neighborhood geography or street locations)

Tom

On Wednesday, August 20th, 2025 at 7:50 AM, Eric Lindman <Eric.Lindman@wausauwi.gov> wrote:

Hi Tom, yes we took one confirmation sample.

Eric Lindman, P.E.

Director of Public Works & Utilities
City of Wausau
407 Grant St.
Wausau, WI 54403-4783
P: 715-261-6745
C: 715-292-2606

From: Tom Kilian <wausau1852@protonmail.com>

Sent: Tuesday, August 19, 2025 10:55 AM

To: Eric Lindman <Eric.Lindman@wausauwi.gov> **Subject:** RE: Question about 2020 Clark Dietz Sewer Study

Hi, Eric,

Thanks again for sending this info. I took a look at it and have a question: were there any more sewer confirmation samples in addition to this one after the fix was applied, or was this single sample at Emter and Thomas the only confirmation analysis?

Tom

On Tuesday, August 5th, 2025 at 3:33 PM, Tom Kilian <wausau1852@protonmail.com> wrote:

Thanks, Eric! -- for the quick response and the information. I appreciate it.

Tom

On Tuesday, August 5th, 2025 at 3:23 PM, Eric Lindman <Eric.Lindman@wausauwi.gov> wrote:

Hi Tom,

Yes we did chemical grouting

at the joints in early spring of 2022 to reduce infiltration into the system. We retested in June 2022 with results below LOD. Attached.

Eric Lindman, P.E.

Director of Public Works & Utilities
City of Wausau
407 Grant St.
Wausau, WI 54403-4783
P: 715-261-6745
C: 715-292-2606

From: Tom Kilian
<wausau1852@protonmail.com>
Sent: Tuesday, August 5, 2025 1:55 PM
To: Eric Lindman
<Eric.Lindman@wausauwi.gov>
Subject: Question about 2020 Clark Dietz Sewer Study

You don't often get email from wausau1852@protonmail.com. [Learn why this is important.](#)

Hi, Eric,

I recently came across this Clark Dietz sewer study again regarding penta. It is on the Wauleco page of DNR's BRRTS website:

https://apps.dnr.wi.gov/rrbotw/dow_nload-document?docSeqNo=153014&sender=activity

The consultant's report made recommendations and presented options/rehab methods for fixes. Were any of these recommendations or options implemented? If not, is the status of the problem presumed to be the same as it was five years ago? Or was something else done since then to fully resolve the problem?

Thank you in advance for your assistance and the information.

Tom ===== Statement of Confidentiality This email and any files transmitted with it are confidential and intended solely for the use of the individual or entity to whom they are addressed. If you are not the intended recipient of this email, any use, dissemination, forwarding, printing, or copying of this email is prohibited. Please notify the sender of this email of the error and delete the email. =====



I/I and Interceptor Sewer Rehabilitation Study

Prepared for: City of Wausau, Wisconsin

Prepared by: Clark Dietz, Inc.

Date: January 2020

Professional Consulting and Design Services

Clark>Dietz

Engineering Quality of Life™

Table of Contents

SECTION	PAGE
1.0 INTRODUCTION	1
1.1 Project Summary.....	1
1.2 Purpose.....	1
2.0 SEWER SYSTEM DESCRIPTION.....	2
2.1 Study Location.....	2
2.2 Wastewater Sampling.....	2
2.2.1 Sampling Locations	2
2.2.2 Sampling Procedure	2
2.2.3 Sampling Results.....	2
2.3 Groundwater Levels	2
2.4 I/I and PCP in Sewer System.....	3
3.0 IMPROVEMENT RECOMMENDATIONS	4
3.1 Rehabilitation Options	4
3.2 Cost Estimates	5
3.3 Recommendations.....	6
4.0 CONCLUSION	7
4.1 Future Investigation	7
4.2 System Improvements.....	7

TABLES

Table 3-1 Comparison of Trenchless Sewer Rehabilitation Methods.....	5
Table 3-2 Trenchless Sewer Rehabilitation Methods Estimates of Probable Cost.....	6

APPENDICES

A	Location Map
B	Wastewater Sampling Locations
C	Wastewater Sampling Results
D	Locations of Monitoring Wells
E	Recorded Groundwater Levels
F	Detected PCP in Manholes
G	Groundwater Elevation in Study Area

1.0 Introduction

1.1 Project Summary

The City of Wausau requested an Infiltration and Inflow (I/I) Assessment and Interceptor Sewer Rehabilitation Study for a small section of their sanitary sewer collection system located in the near southwest side of the City from Riverside Park south to the wastewater treatment facility (WWTF). There is a Wisconsin Department of Natural Resources (WDNR)-regulated cleanup site in this area due to groundwater contamination. The owner of the site treats the groundwater to remove Pentachlorophenol (PCP) and then discharges the treated groundwater water to the City's sanitary sewer.

An Infiltration and Inflow (I/I) Assessment and Interceptor Sewer Rehabilitation Study has been completed for the City of Wausau, Wisconsin. This report provides a condition assessment for a small section of the City of Wausau's sanitary sewer system located in the near southwest side of the City from Riverside Park south to the WWTF. This report evaluates suspected deficiencies within this area and recommends possible improvements. The evaluation includes a summary of recent wastewater sampling and groundwater monitoring data which was provided by the City of Wausau.

1.2 Purpose

The purpose of this study is to determine if the interceptors in the area are experiencing I/I. The provided sampling results show a presence of PCP in the sanitary sewer collection system downstream of the regulated site sanitary sewer discharge. It correlates that if a pollutant is present downstream in the sewers, which wasn't present at the discharge "source", it must be entering the sewers via I/I. The chemical pentachlorophenol (PCP) is known to exist in soils in this area. The study will examine if and where PCP has been detected in this part of the sewer system and attempt to determine the area(s) it may be entering the sewer system.

If I/I is occurring in the area, steps should be taken to prevent it in the future. The study includes recommendations for replacement or rehabilitation of the existing sewer system. Recommendations are based on compliance with all applicable federal, state, and local codes and standards. The study includes a preliminary cost estimate for these improvements.

2.0 Sewer System Description

2.1 Study Location

The study examined portions of two interceptor sewers located in the center of the City of Wausau near the wastewater treatment facility (WWTF). The study location is shown on the map in Appendix A. The map, and all others in this report, were prepared by City staff using Wausau's current GIS system.

One section of the interceptor is located in Thomas Street and flows from the west to the east. At Cleveland Avenue the sewer increases in diameter from 18-inch to 20-inch. At McCleary Street near the Thomas Street Bridge the 20-inch sewer turns south and decreases back to 18-inch diameter. A separate 30-inch interceptor sewer flows from the north through Riverside Park on the west side of the river. At River Street this sewer increases in size to 36-inch diameter. At Adrian Street the interceptor turns to the east and takes in the 18-inch interceptor at McCleary Street. The 36-inch interceptor then continues to flow to the east toward the WWTF.

2.2 Wastewater Sampling

2.2.1 Sampling Locations

Wastewater was sampled in a total of eight manholes along the interceptor sewers identified in Section 2.1. The sampling locations were selected with assistance from WDNR staff and are shown on the map in Appendix B. The sampling locations were chosen to test wastewater both upstream of and downstream of the treated groundwater discharge point as well as within the area known to contain PCP. Multiple samples were taken from the same manholes on different days to confirm/verify information and data. Samples were taken in manholes located above and below the normal groundwater levels. The sampling manholes vary in depth from approximately 8.7 feet to 17.4 feet.

2.2.2 Sampling Procedures

Wastewater grab samples were collected by Wausau Water Works staff on January 8, 2019, March 26, 2019, June 10, 2019, and June 12, 2019. The samples were analyzed by Badger Labs and Synergy Environmental Lab, Inc.

2.2.3 Sampling Results

The sampling results are included in Appendix C. On January 8th, five of the seven samples collected showed the presence of PCP. In the March sampling effort, five of the eight samples collected contained PCP. On June 10th and 12th, two of the three samples collected showed the presence of PCP. In all the other samples, the level of PCP was below the limit of detection (LOD, 1.84 µg/L).

2.3 Groundwater Levels

Groundwater elevations in the study area have been monitored for many years in monitoring wells located on or near the Wauleco industrial site. TRC Companies, Inc., the firm that conducted the groundwater monitoring, supplied the City with ten years' worth of groundwater elevations from wells located near the interceptor sewer. A map showing the monitoring wells is included in Appendix D.

The groundwater sampling results are included in a table in Appendix E. Two level outliers were removed from the calculation of the normal average groundwater elevations. The first is a high water level that occurred in the summer of 2011 which resulted from a water main break. The second is the lowering of Lake Wausau in fall of 2016 that resulted in abnormally low levels.

2.4 I/I and PCP in Sewer System

The map in Appendix F shows the PCP sample results, the dates the samples were taken, and the locations of the manholes sampled. It should be noted that there are two separate interceptor sewer lines that run through this area. These two lines intersect at MH5 at the intersection of McCleary and Adrian Streets. The interceptor line from the west connects on the north side of MH5 and the interceptor line from the north connects on the west side of MH5. For the January and March sample events, there were two samples taken from MH5: one from the north inlet and one from the west inlet, each representing a different interceptor sewer.

January Sample Event

In the January 8th sampling event, PCP was sampled on the interceptor line that runs west to east. Samples along this west to east interceptor were taken from MH7, MH6, and MH5. The farthest west sample location, which is upstream of the treated groundwater discharge point, is MH7 and the result was below the LOD. The sample taken at MH6, which is downstream of the treated groundwater discharge point, showed detection of PCP. The next sample downstream was from MH5, which showed PCP detection significantly less than that from MH 6.

During the January 8th sampling event, PCP was also sampled on the interceptor line that runs north to south. Samples along this north to south interceptor were taken from MH162, MH53, and MH 5. The sample taken from MH162, north of the study area, was below the LOD. The sample taken from MH53 showed detection of PCP and the sample from the downstream MH5 showed a higher detection level of PCP. Both of these lines connect at MH5.

March Sample Event

In the March 26th sampling event, PCP was again sampled on the two interceptor lines that run west to east and north to south. Samples on the west to east interceptor were taken at MH6, MH5, and MH2, upstream to downstream respectively. MH6 was below the LOD, MH5 was below the LOD, and in MH2 PCP was detected. MH2 is downstream of MH5 where the two interceptors connect.

On the interceptor line running north to south samples were taken at MH162, MH53, MH54 and MH5, upstream to downstream respectively. MH162 was below the LOD, MH53 detected PCP, MH54 detected PCP slightly higher than MH 53, and MH5 detected PCP slightly higher than MH54. Again, MH2 detection was slightly less than MH5. Both interceptors connect upstream in MH5 and dilution could reduce the detected concentration.

June Sample Event

In the June 10th and 12th sampling event the north to south interceptor was the only line tested. Samples were taken from MH 51, MH52, and MH53. The sample at MH51 was below the LOD and the MH52 and MH53 samples both detected PCP at a very similar level.

General Observations

PCP concentrations did not increase steadily in either the east- or south-flowing interceptor. The level varied somewhat from one location to another. The volume of wastewater in the system increases as it moves toward the WWTF, and the PCP concentration will vary in the water entering the system. Mixing also occurs in the sewer system. All these factors will affect the overall concentration of the chemical.

The map/graph in Appendix G shows the observed groundwater elevations in relation to PCP found in the wastewater samples. The map shows that manholes below the typical groundwater level are more likely to contain PCP in the wastewater. This indicates that PCP is first entering the groundwater and then entering the wastewater system.

Since PCP was not detected in the wastewater manholes located farthest to the north and west of the study area, it appears that contamination is not entering the system from these areas. It is instead occurring directly within the study area. Further narrowing down the area of influence or most likely possibilities for PCP I/I, it appears the north-south interceptor has I/I issues for groundwater containing PCP.

3.0 Improvement Recommendations

The results of the wastewater sampling and groundwater monitoring discussed in the previous section indicated that I/I is occurring in the study area. I/I occurs in almost all sewer systems, and especially in older systems or those that have been degraded by the type and volume of flow. In this case, repairs are recommended to prevent PCP from continuing to enter the sewer system.

3.1 Rehabilitation Options

Sanitary sewers can be replaced or rehabilitated by conventional open cut construction or different types of trenchless rehabilitation. The type of construction will depend on other aspects of the project. When the primary purpose of the project is to perform a complete pavement replacement, new sewers will likely be installed via open cut methods, since the road will already be demolished. This is especially true if the cost of the project is being shared between various funding sources, so that the sewer utility is not covering the entire cost of the project.

If pavement replacement is not planned, trenchless rehabilitation technologies may be a better option. These rehabilitation methods are long-term solutions that can be applied to many sewer defects, such as cracks and offset joints. Large breaks and cave-ins will likely require spot excavation and pipe section replacement.

In this case, significant environmental costs may be incurred if open cut methods are utilized. Contaminated soils may have to be removed from the site and remediated or disposed of. This type of determination, however, is outside the scope of this study.

The cost of trenchless rehabilitation varies depending on the size and length of sewer. Using sewer lining as an example, for a 12-inch sewer, the cost of lining is approximately \$60 per linear foot. For comparison, the cost of 12-inch sewer replacement is approximately \$220 per linear foot when it includes pavement restoration. With lining and other trenchless technologies, the construction cost per foot increases as pipe size increases and the total length of pipe to be rehabilitated decreases.

These sections of the interceptor sewers are subject to I/I but are likely not in need of full replacement. City staff have used Wausau's camera equipment to inspect some of the sewers in the area and found no major leaks or deficiencies. City staff has not indicated that there are immediate plans for road replacements in the study area. These conditions warrant the use of trenchless rehabilitation to reduce I/I and therefore PCP in the sewers. Rehabilitation will also increase the life of the pipe. Several methods of rehabilitation are available, including pipe bursting, slip lining, spray-in-place pipe, and cured-in-place pipe.

The table below outlines the advantages and disadvantages of different trenchless rehabilitation methods. Costs for each method were obtained from contractors with trenchless rehabilitation experience. They are based on rehabilitation of 36-inch pipe. The costs are associated with pipe-only rehabilitation and do not include incidental costs such as bypass pumping, traffic control, and erosion control. Cured-in-place pipe stands out as the most economical and least impactful to the project area.

Table 3-1
Comparison of Trenchless Sewer Rehabilitation Methods

METHOD	DESCRIPTION	COST (Pipe Only)	ADVANTAGES	DISADVANTAGES
PIPE BURSTING	New pipe pulled through a fragmented old pipe.	\$550-650/LF	Completely new pipe	Bypassing required, cannot pipe burst RCP, not recommended if host pipe is within 5 feet of other utilities, excavation required at each penetration/lateral
SLIP LINING	Smaller diameter, smoother, new pipe pushed inside of remaining old pipe.	\$250-350/LF	Can be done without bypassing, brand new pipe	Cost, excavation pit required for every 1000 feet, excavation required at each penetration/lateral
SPRAY-IN-PLACE PIPE	Geo-Polymer coating applied to the inside of the existing pipe.	\$400-500/LF	No excavation required, lining is structural after curing	Cost, all infiltration will require grouting prior to application, bypassing required
CURED-IN-PLACE PIPE	Inverted resin impregnated felt liner, inflated and cured to the inside of the existing pipe.	\$150-250/LF	Lower cost, no excavation required, liner is structural after curing	Bypassing required, long curing times requiring overnight engines, heavy infiltration requires grouting prior to lining

Source: Mequon-Thiensville Interceptor Rehab Memo, Clark Dietz, Inc., August 16, 2019

3.2 Cost Estimates

Wastewater sampling indicated that PCP enters the sewer system directly within the study area. Pipe rehabilitation is therefore recommended to start at the intersection of Thomas Street and First Avenue and continue to the treatment facility. The map in Appendix A shows the interceptor sewers in the study area, which includes approximately 4900 feet of pipe. The table below shows high-level preliminary planning cost estimates for the various types of pipe rehabilitation. Since the sewer varies in size from 18-inch to 36-inch, estimates at the lower end of the cost spectrum were used to calculate the total project cost.

**Table 3-2
Trenchless Sewer Rehabilitation Methods
Estimates of Probable Cost**

Item	Pipe Bursting	Slip Lining	Spray-in-Place Pipe	Cured-in-Place Pipe
Estimated cost per foot of rehabilitated sewer ¹	\$550	\$250	\$400	\$150
Preliminary cost estimate ²	\$2,695,000	\$1,225,000	\$1,960,000	\$735,000
20% construction contingency	\$539,000	\$245,000	\$392,000	\$147,000
Estimated construction cost	\$3,234,000	\$1,470,000	\$2,352,000	\$882,000
Legal, Engineering, and Design (10%)	\$323,400	\$147,000	\$235,200	\$88,200
Total Estimated Cost	\$3,557,400	\$1,617,000	\$2,587,200	\$970,200

¹ Based on Mequon-Thiensville Interceptor Rehab Memo, Clark Dietz, Inc., August 16, 2019.

² Based on 4,900 feet of sewer rehabilitation, 18-inch to 36-inch diameter.

The interceptor sewers are located under street pavement along most of their length. Open cut sewer replacement would require removal of the existing pavement and excavation of the existing sewer, necessitating a complete reconstruction of the affected streets. The cost of open cut sewer replacement and street reconstruction can be expected to be at least double the cost of CIPP lining. Potential hauling and remediation of the soils excavated from the project site will also increase the cost of open cut construction.

3.3 Recommendations

After considering the four trenchless pipe rehabilitation methods, cured-in-place pipe lining appears to be the best option for remediation of the sanitary sewer interceptor. CIPP lining has the lowest cost and will be the least intrusive to the project area. CIPP lining is a widely accepted process for pipe rehabilitation and there are several qualified contractors in Wisconsin with extensive CIPP installation experience.

Prior to beginning a CIPP remediation project, it will be necessary to determine and specify the thickness of the liner to be used in the interceptor. The condition and shape of the pipe as well as the type of curing resin to be used will affect the liner thickness. The contractor should be required to submit a cured liner sample to the City prior to starting the work.

Cured-in-place pipe lining requires all flow to be bypassed around the rehabilitated pipe while the liner cures. This is typically a 12- to 24-hour process. Past rehabilitation projects have shown that bypass pumping is an expensive operation for contractors and variability in bypassing costs is common. The rehabilitation contractor should be required to submit a bypass plan prior to starting construction, and City staff should offer options for disposal of the bypassed sewage.

4.0 Conclusion

Wastewater sampling and groundwater monitoring in the study area show that PCP is present in the interceptor sewer near the treatment facility. The interceptor sewer that appears to have the most significant I/I is the north to south interceptor. In the samples upstream of the study area, no PCP was detected. PCP was detected regularly in the downstream samples of the north to south interceptor. PCP is not normally present in sewage, indicating that it is entering the sewer system along the interceptor. It is likely that PCP is entering the system through groundwater infiltration.

4.1 Future Investigation

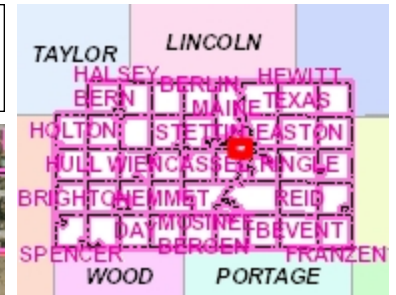
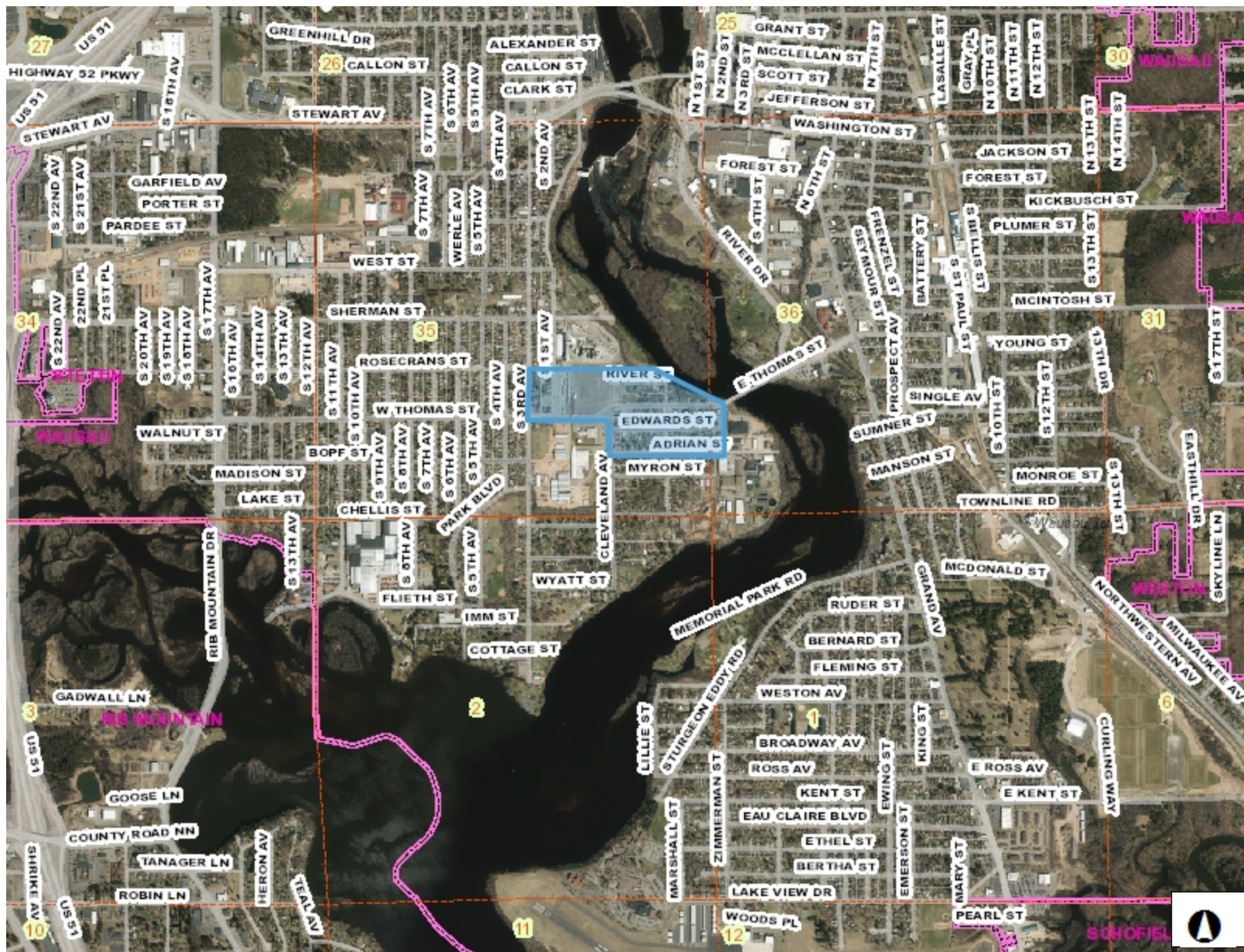
Further data about the interceptor sewer will be required in order to verify if groundwater is entering the sewer. The sewer should first be inspected by televising along the route where PCP has been detected. The inspection will show the sewer's problem areas, and whether groundwater I/I is actually occurring in the study area. The inspection will also help to verify the project limits. Plans can then be made for future repairs and upgrades. The inspection results should be reviewed soon after they are completed, as conditions can change quickly. Televising of the interceptor may show that lining is recommended at least along certain lengths of the sewers. If leaking joints and cracks are common, lining could potentially reduce I/I. The inspection will also show whether there are large breaks or significant defects that require spot excavations.

Manhole inspections should also be a part of the sewer televising contract. The manhole condition and potential problem areas will be noted in the inspection reports. Repairs, lining, and rehabilitation of manholes in poor condition should be combined into the sewer rehabilitation/lining work for the best bid pricing. Many lining contractors also perform manhole rehabilitation.

4.2 System Improvements

If the sewer and manhole investigations show that contaminated groundwater is entering the sewer system, plans should be made for system rehabilitation. The repairs can include the entire interceptor length as shown in Chapter 3, or only the worst areas of the system. The contract documents should include a map showing the sections to be rehabilitated and detailed specifications for the repair work.

Appendix A – Location Map



Legend

- Section Lines/Numbers
- Right Of Ways
- Municipalities
- 2015 Orthos
 - Band_1
 - Band_2
 - Band_3
- Surrounding_Counties
 - CLARK
 - LANGLADE
 - LINCOLN
 - PORTAGE
 - SHAWANO
 - TAYLOR
 - WAUPACA
 - WOOD

992.57 0 992.57 Feet

NAD_1983_HARN_WISCRS_Marathon_County_Feet

DISCLAIMER: The information and depictions herein are for informational purposes and Marathon County-City of Wausau specifically disclaims accuracy in this reproduction and specifically admonishes and advises that if specific and precise accuracy is required, the same should be determined by procurement of certified maps, surveys, plats, Flood Insurance Studies, or other official means. Marathon County-City of Wausau will not be responsible for any damages which result from third party use of the information and depictions herein or for use which ignores this warning.

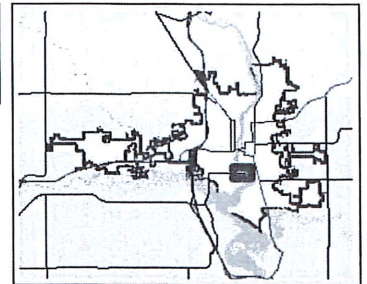
THIS MAP IS NOT TO BE USED FOR NAVIGATION

Notes

Appendix B – Wastewater Sampling Locations



DPW Mapping System



- Legend**
- ▭ Parcels
 - ▬ Section Lines/Numbers
 - ▬ Right Of Ways
 - Manhole
 - ▬ Gravity Main
 - Collector
 - Interceptor
 - ▬ Force Main
 - Liftstation
 - ▬ Abandoned Gravity Main



Map Created: 1/21/2019

111.42 0 111.42 Feet

NAD_1983_HARN_WISCRS_Marathon_County_Feet

DISCLAIMER: The information and depictions herein are for informational purposes and Marathon County-City of Wausau specifically disclaims accuracy in this reproduction and specifically admonishes and advises that if specific and precise accuracy is required, the same should be determined by procurement of certified maps, surveys, plats, Flood Insurance Studies, or other official means. Marathon County-City of Wausau will not be responsible for any damages which result from third party use of the information and depictions herein or for use which ignores this warning.

THIS MAP IS NOT TO BE USED FOR NAVIGATION

Notes

Appendix C – Wastewater Sampling Results

WAUSAU WATER WORKS
 407 GRANT STREET
 WAUSAU, WI 54401

 Project Number: 19001453
 Report Date: 1/21/2019
 Sampled By: CLIENT

Attn: DAVE ERICKSON/KEVIN FABEL

Samples: 7 WASTEWATER

 Sample Number: 49003143
 Sample ID: MH #7 THOMAS ST
 Sample Date: 1/8/2019
 Date Received: 1/8/2019

Parameter	Results	Units	LOD	LOQ	Dil.	Method	Analyzed	Codes
PENTACHLOROPHENOL	<1.9	ug/l	1.9	6.03	1	8270C	01/15/19	7*

 Sample Number: 49003144
 Sample ID: MH #6 THOMAS ST
 Sample Date: 1/8/2019
 Date Received: 1/8/2019

Parameter	Results	Units	LOD	LOQ	Dil.	Method	Analyzed	Codes
PENTACHLOROPHENOL	17.8	ug/l	1.9	6.03	1	8270C	01/15/19	7*

 Sample Number: 49003145
 Sample ID: MH #162
 Sample Date: 1/8/2019
 Date Received: 1/8/2019

Parameter	Results	Units	LOD	LOQ	Dil.	Method	Analyzed	Codes
PENTACHLOROPHENOL	<1.9	ug/l	1.9	6.03	1	8270C	01/15/19	7*

 Sample Number: 49003146
 Sample ID: MH #53 EMTER ST
 Sample Date: 1/8/2019
 Date Received: 1/8/2019

Parameter	Results	Units	LOD	LOQ	Dil.	Method	Analyzed	Codes
PENTACHLOROPHENOL	6.0	ug/l	1.9	6.03	1	8270C	01/15/19	7,J,K1*

Sample Number: 49003147
Sample ID: MH #5 MCCLEARY
Sample Date: 1/8/2019
Date Received: 1/8/2019

Parameter	Results	Units	LOD	LOQ	Dil.	Method	Analyzed	Codes
PENTACHLOROPHENOL	8.9	ug/l	1.9	6.03	1	8270C	01/15/19	7*

Sample Number: 49003148
Sample ID: MH #5 ADRIAN ST
Sample Date: 1/8/2019
Date Received: 1/8/2019

Parameter	Results	Units	LOD	LOQ	Dil.	Method	Analyzed	Codes
PENTACHLOROPHENOL	22.4	ug/l	1.9	6.03	1	8270C	01/15/19	7*

Sample Number: 49003149
Sample ID: RAW INFLUENT
Sample Date: 1/8/2019
Date Received: 1/8/2019

Parameter	Results	Units	LOD	LOQ	Dil.	Method	Analyzed	Codes
PENTACHLOROPHENOL	3.4	ug/l	1.9	6.03	1	8270C	01/15/19	7,J,K1*

*Quality Assurance Code(s):

- 7. Analyzed by sub contracted lab: Certification #445037560
 - J. Insufficient sample size to complete analysis.
 - K1. Analyte detected between the LOD and LOQ.
- All LOD/LOQs adjusted for dilution and/or solids content.

BADGER LABORATORIES, INC.
WDNR Certified Lab #445023150
Approved By:

Amanda Vordus

BLE:gr
CC: KEN BLOOM – WAUSAU WWTF

SAMPLE REQUEST & CHAIN OF CUSTODY FORM

CLIENT NAME / ADDRESS
 Wausau WWTF
 435 Adrian Street, Wausau, WI 54401
 BILLING ADDRESS / EMAIL
 407 Grant Street, Wausau, WI 54403

TURN AROUND TIME
 STANDARD 10 DAY:
 RUSH (200% UPGRADE):
 DATE NEEDED: _____

REPORT TO:
 Dave Erickson / Ken Bloom
 EMAIL:
 Ken.Bloom@ci.wausau.wi.us
 PHONE:
 715-261-6940
 PROJECT NAME / SITE:
 PCP Sampling - Collection System

PO NUMBER: _____
 MATRIX:
 DW = DRINKING WATER
 WW = WASTEWATER
 GW = GROUNDWATER
 CW = COOLING WATER
 S = SOLID/SLUDGE
 P = PAPER
 F = FUEL
 OTHER: _____

19001453



Neenah: 501 W. Bell St. Neenah, WI 54956
 Green Bay: 2150 Memorial Drive Suite 106 Green Bay, WI 54303

Certifications
 WI DNR Cert. Lab #445023150
 WI DATCP Cert. #105-205
 GB-WI DNR Cert. Lab #40522620
 GB-WI DATCP Cert. #105-450

ANALYTICAL REQUESTS

SAMPLE ID	SAMPLE COLLECTION		PRESERVATIVE (SEE BELOW)	MATRIX (SEE ABOVE)	GRAB or COMPOSITE	LAB USE ONLY	
	DATE	TIME				PROJECT #	SAMPLE #
MH# 7 Thomas St.	1/8/19	8:25AM	NP	WW	Grab	1453	3143
MH# 6 Thomas St.	1/8/19	8:32AM	NP	WW	Grab		47
MH# Ked	1/8/19	7:55AM	NP	WW	Grab		4-
MH# 53 Enter St.	1/8/19	7:40AM	NP	WW	Grab		46
MH# 5 McCleary	1/8/19	7:30AM	NP	WW	Grab		47
MH# 5 Adrian St.	1/8/19	7:30AM	NP	WW	Grab		48
Raw Influent	1/8/19	8:52AM	NP	WW	Grab		49
Raw Influent	1/8/19	8:52AM	NP	WW	Grab		L
Raw Influent	1/8/19	8:52AM	NP	WW	Grab		

PCPs

PRESERVATIVE: NP=NO PRESERVATIVE; H2SO4=SULFURIC ACID; HNO3=NITRIC ACID; HCL=HYDROCHLORIC ACID; NaOH=SODIUM HYDROXIDE; ZA=ZINC ACETATE

CHAIN OF CUSTODY RECORD

FILLED IN BY CLIENT
 SAMPLED BY: Ken Bloom
 DATE/TIME SAMPLED: 1-8-19 7:30AM - 9:00AM
 RELAYED BY: Ken Bloom
 DELIVERY METHOD: Badger Lab Pick-up

FILLED IN BY BADGER LABS
 RECEIVED BY: JT
 DATE/TIME RECEIVED: 1/8/19 10:20
 LOGGED IN: SLD
 ICE?: Y/N:

ADDITIONAL COMMENTS:

WAUSAU WATER WORKS
407 GRANT STREET
WAUSAU, WI 54401

Project Number: 19004457
Report Date: 4/12/2019
Sampled By: CLIENT

Attn: DAVE ERICKSON/KEVIN FABEL/KEN BLOOM

Samples: 8 WASTEWATER

Sample Number: 49009609
Sample ID: MH #2 ADRAIN ST
Sample Date: 3/26/2019
Date Received: 3/26/2019

Parameter	Results	Units	LOD	LOQ	Dil.	Method	Analyzed	Codes
PENTACHLOROPHENOL	- SEE ATTACHED SYNERGY REPORT REPORT -							7*

Sample Number: 49009610
Sample ID: MH #13
Sample Date: 3/26/2019
Date Received: 3/26/2019

Parameter	Results	Units	LOD	LOQ	Dil.	Method	Analyzed	Codes
PENTACHLOROPHENOL	- SEE ATTACHED SYNERGY REPORT -							7*

Sample Number: 49009611
Sample ID: MH #53
Sample Date: 3/26/2019
Date Received: 3/26/2019

Parameter	Results	Units	LOD	LOQ	Dil.	Method	Analyzed	Codes
PENTACHLOROPHENOL	- SEE ATTACHED SYNERGY REPORT -							7*

Sample Number: 49009612
Sample ID: MH #54
Sample Date: 3/26/2019
Date Received: 3/26/2019

Parameter	Results	Units	LOD	LOQ	Dil.	Method	Analyzed	Codes
PENTACHLOROPHENOL	- SEE ATTACHED SYNERGY REPORT -							7*

Sample Number: 49009613
Sample ID: MH #11
Sample Date: 3/26/2019
Date Received: 3/26/2019

Parameter	Results	Units	LOD	LOQ	Dil.	Method	Analyzed	Codes
PENTACHLOROPHENOL	- SEE ATTACHED SYNERGY REPORT -							7*

Sample Number: 49009614
Sample ID: MH #6
Sample Date: 3/26/2019
Date Received: 3/26/2019

Parameter	Results	Units	LOD	LOQ	Dil.	Method	Analyzed	Codes
PENTACHLOROPHENOL	- SEE ATTACHED SYNERGY REPORT -							7*

Sample Number: 49009615
Sample ID: MH #5 NORTH CLEARY
Sample Date: 3/26/2019
Date Received: 3/26/2019

Parameter	Results	Units	LOD	LOQ	Dil.	Method	Analyzed	Codes
PENTACHLOROPHENOL	- SEE ATTACHED SYNERGY REPORT -							7*

Sample Number: 49009616
Sample ID: MH #5 WEST ADRIAN
Sample Date: 3/26/2019
Date Received: 3/26/2019

Parameter	Results	Units	LOD	LOQ	Dil.	Method	Analyzed	Codes
PENTACHLOROPHENOL	- SEE ATTACHED SYNERGY REPORT -							7*

*Quality Assurance Code(s):
7. Analyzed by sub contracted lab: Certification #445037560
All LOD/LOQs adjusted for dilution and/or solids content.

BADGER LABORATORIES, INC.
WDNR Certified Lab #445023150
Approved By:



BLE:gr

Synergy Environmental Lab, INC

1990 Prospect Ct., Appleton, WI 54914 *P 920-830-2455 * F 920-733-0631

JOHN LARSON
 BADGER LABORATORIES & ENGINEERING
 501 W BELL STREET
 NEENAH WI 54956

Report Date 11-Apr-19

Project Name
 Project #

Invoice # E35935

Lab Code 5035935A
 Sample ID 9609
 Sample Matrix Water
 Sample Date 3/26/2019

	Result	Unit	LOD	LOQ	Dil	Method	Ext Date	Run Date	Analyst	Code
Organic										
Semi Volatiles										
Pentachlorophenol (PCP)	22.9	ug/l	1.84	5.85	1	8270C	3/28/2019	4/4/2019	MJR	1
2-Fluorobiphenyl-surrogate	85	REC %			1	8270C	3/28/2019	4/4/2019	MJR	1
2-Fluorophenol-surrogate	24.1	REC %			1	8270C	3/28/2019	4/4/2019	MJR	1
Nitrobenzene-d5-surrogate	79	REC %			1	8270C	3/28/2019	4/4/2019	MJR	1
Phenol-d6-surrogate	19.7	REC %			1	8270C	3/28/2019	4/4/2019	MJR	1
p-Terphenyl-d14-surrogate	99	REC %			1	8270C	3/28/2019	4/4/2019	MJR	1
2,4,6-Tribromophenol-surrogate	98	REC %			1	8270C	3/28/2019	4/4/2019	MJR	1

Lab Code 5035935B
 Sample ID 9610
 Sample Matrix Water
 Sample Date 3/26/2019

	Result	Unit	LOD	LOQ	Dil	Method	Ext Date	Run Date	Analyst	Code
Organic										
Semi Volatiles										
Pentachlorophenol (PCP)	< 1.84	ug/l	1.84	5.85	1	8270C	3/28/2019	4/4/2019	MJR	1
2-Fluorobiphenyl-surrogate	22.7	REC %			1	8270C	3/28/2019	4/4/2019	MJR	1
2-Fluorophenol-surrogate	11.1	REC %			1	8270C	3/28/2019	4/4/2019	MJR	1
Nitrobenzene-d5-surrogate	21.4	REC %			1	8270C	3/28/2019	4/4/2019	MJR	1
Phenol-d6-surrogate	8.6	REC %			1	8270C	3/28/2019	4/4/2019	MJR	1
p-Terphenyl-d14-surrogate	22.4	REC %			1	8270C	3/28/2019	4/4/2019	MJR	1
2,4,6-Tribromophenol-surrogate	24.4	REC %			1	8270C	3/28/2019	4/4/2019	MJR	1

Project Name
Project #

Invoice # E35935

Lab Code 5035935C
Sample ID 9611
Sample Matrix Water
Sample Date 3/26/2019

	Result	Unit	LOD	LOQ	Dil	Method	Ext Date	Run Date	Analyst	Code
Organic										
Semi Volatiles										
Pentachlorophenol (PCP)	21.7	ug/l	1.84	5.85	1	8270C	3/28/2019	4/4/2019	MJR	1
2-Fluorobiphenyl-surrogate	76	REC %			1	8270C	3/28/2019	4/4/2019	MJR	1
2-Fluorophenol-surrogate	23.3	REC %			1	8270C	3/28/2019	4/4/2019	MJR	1
Nitrobenzene-d5-surrogate	68	REC %			1	8270C	3/28/2019	4/4/2019	MJR	1
Phenol-d6-surrogate	16.1	REC %			1	8270C	3/28/2019	4/4/2019	MJR	1
p-Terphenyl-d14-surrogate	78	REC %			1	8270C	3/28/2019	4/4/2019	MJR	1
2,4,6-Tribromophenol-surrogate	86	REC %			1	8270C	3/28/2019	4/4/2019	MJR	1

Lab Code 5035935D
Sample ID 9612
Sample Matrix Water
Sample Date 3/26/2019

	Result	Unit	LOD	LOQ	Dil	Method	Ext Date	Run Date	Analyst	Code
Organic										
Semi Volatiles										
Pentachlorophenol (PCP)	19.3	ug/l	1.84	5.85	1	8270C	3/28/2019	4/4/2019	MJR	1
2-Fluorobiphenyl-surrogate	71	REC %			1	8270C	3/28/2019	4/4/2019	MJR	1
2-Fluorophenol-surrogate	18.7	REC %			1	8270C	3/28/2019	4/4/2019	MJR	1
Nitrobenzene-d5-surrogate	64	REC %			1	8270C	3/28/2019	4/4/2019	MJR	1
Phenol-d6-surrogate	12.9	REC %			1	8270C	3/28/2019	4/4/2019	MJR	1
p-Terphenyl-d14-surrogate	69	REC %			1	8270C	3/28/2019	4/4/2019	MJR	1
2,4,6-Tribromophenol-surrogate	81	REC %			1	8270C	3/28/2019	4/4/2019	MJR	1

Lab Code 5035935E
Sample ID 9613
Sample Matrix Water
Sample Date 3/26/2019

	Result	Unit	LOD	LOQ	Dil	Method	Ext Date	Run Date	Analyst	Code
Organic										
Semi Volatiles										
Pentachlorophenol (PCP)	20.9	ug/l	1.84	5.85	1	8270C	3/28/2019	4/4/2019	MJR	1
2-Fluorobiphenyl-surrogate	79	REC %			1	8270C	3/28/2019	4/4/2019	MJR	1
2-Fluorophenol-surrogate	20.6	REC %			1	8270C	3/28/2019	4/4/2019	MJR	1
Nitrobenzene-d5-surrogate	72	REC %			1	8270C	3/28/2019	4/4/2019	MJR	1
Phenol-d6-surrogate	< 1	REC %			1	8270C	3/28/2019	4/4/2019	MJR	1
p-Terphenyl-d14-surrogate	72	REC %			1	8270C	3/28/2019	4/4/2019	MJR	1
2,4,6-Tribromophenol-surrogate	90	REC %			1	8270C	3/28/2019	4/4/2019	MJR	1

Project Name
Project #

Invoice # E35935

Lab Code 5035935F
Sample ID 9614
Sample Matrix Water
Sample Date 3/26/2019

	Result	Unit	LOD	LOQ	Dil	Method	Ext Date	Run Date	Analyst	Code
Organic										
Semi Volatiles										
Pentachlorophenol (PCP)	< 1.84	ug/l	1.84	5.85	1	8270C	3/28/2019	4/4/2019	MJR	1
2-Fluorobiphenyl-surrogate	85	REC %			1	8270C	3/28/2019	4/4/2019	MJR	1
2-Fluorophenol-surrogate	29.2	REC %			1	8270C	3/28/2019	4/4/2019	MJR	1
Nitrobenzene-d5-surrogate	79	REC %			1	8270C	3/28/2019	4/4/2019	MJR	1
Phenol-d6-surrogate	17.6	REC %			1	8270C	3/28/2019	4/4/2019	MJR	1
p-Terphenyl-d14-surrogate	84	REC %			1	8270C	3/28/2019	4/4/2019	MJR	1
2,4,6-Tribromophenol-surrogate	97	REC %			1	8270C	3/28/2019	4/4/2019	MJR	1

Lab Code 5035935G
Sample ID 9615
Sample Matrix Water
Sample Date 3/26/2019

	Result	Unit	LOD	LOQ	Dil	Method	Ext Date	Run Date	Analyst	Code
Organic										
Semi Volatiles										
Pentachlorophenol (PCP)	< 1.84	ug/l	1.84	5.85	1	8270C	3/28/2019	4/4/2019	MJR	1
2-Fluorobiphenyl-surrogate	81	REC %			1	8270C	3/28/2019	4/4/2019	MJR	1
2-Fluorophenol-surrogate	28.1	REC %			1	8270C	3/28/2019	4/4/2019	MJR	1
Nitrobenzene-d5-surrogate	71	REC %			1	8270C	3/28/2019	4/4/2019	MJR	1
Phenol-d6-surrogate	18.8	REC %			1	8270C	3/28/2019	4/4/2019	MJR	1
p-Terphenyl-d14-surrogate	85	REC %			1	8270C	3/28/2019	4/4/2019	MJR	1
2,4,6-Tribromophenol-surrogate	96	REC %			1	8270C	3/28/2019	4/4/2019	MJR	1

Lab Code 5035935H
Sample ID 9616
Sample Matrix Water
Sample Date 3/26/2019

	Result	Unit	LOD	LOQ	Dil	Method	Ext Date	Run Date	Analyst	Code
Organic										
Semi Volatiles										
Pentachlorophenol (PCP)	29.3	ug/l	1.84	5.85	1	8270C	3/28/2019	4/4/2019	MJR	1
2-Fluorobiphenyl-surrogate	74	REC %			1	8270C	3/28/2019	4/4/2019	MJR	1
2-Fluorophenol-surrogate	24.7	REC %			1	8270C	3/28/2019	4/4/2019	MJR	1
Nitrobenzene-d5-surrogate	66	REC %			1	8270C	3/28/2019	4/4/2019	MJR	1
Phenol-d6-surrogate	16.2	REC %			1	8270C	3/28/2019	4/4/2019	MJR	1
p-Terphenyl-d14-surrogate	75	REC %			1	8270C	3/28/2019	4/4/2019	MJR	1
2,4,6-Tribromophenol-surrogate	87	REC %			1	8270C	3/28/2019	4/4/2019	MJR	1

Project Name
Project #

Invoice # E35935

"J" Flag: Analyte detected between LOD and LOQ

LOD Limit of Detection

LOQ Limit of Quantitation

<i>Code</i>	<i>Comment</i>
1	Laboratory QC within limits.

All solid sample results reported on a dry weight basis unless otherwise indicated. All LOD's and LOQ's are adjusted for dilutions but not dry weight. Subcontracted results are denoted by SUB in the analyst field.

Authorized Signature

A handwritten signature in black ink, appearing to read "Michael P. ...", written over a horizontal line.

CHAIN OF CUSTODY RECORD

Synergy

Environmental Lab, Inc.

1990 Prospect Ct. • Appleton, WI 54914
920-830-2455 • FAX 920-733-0631

Chain # No 3205

Page of

Lab I.D. # _____
Account No. : _____ Quote No.: _____
Project #: _____
Sampler: (signature) _____

Sample Handling Request
Rush Analysis Date Required _____
(Rushes accepted only with prior authorization)
 Normal Turn Around

Project (Name / Location): _____
Reports To: _____
Company: Badger Labs
Address: _____
City State Zip: _____
Phone: _____
FAX: _____

Lab I.D.	Sample I.D.	Collection Date	Time	Comp	Grab	Filtered Y/N	No. of Containers	Sample Type (Matrix)	Preservation	Analysis Requested	Other Analysis	
S03515A	9109	3-16		4		N	1	WW	NP	DRO (Mod DRO Sep 95) GRO (Mod GRO Sep 95) LEAD NITRATE/NITRITE OIL & GREASE PAH (EPA 8270) PCB PVOG (EPA 8021) PVOG + NAPHTHALENE SULFATE TOTAL SUSPENDED SOLIDS VOC DW (EPA 524.2) VOC (EPA 8260) 8-PCRA METALS	Pesticides	
B	10			1			3					
D	11			1			1					
E	12			1			1					
F	13			1			1					
G	14			1			1					
H	15			1			1					
	16			1			1					

Comments/Special Instructions ("Specify groundwater "GW", Drinking Water "DW", Waste Water "WW", Soil "S", Air "A", Oil, Sludge etc.")

Sample Integrity - To be completed by receiving lab
Method of Shipment: Overnight °C On Ice: X
Temp of Temp. Blank: _____ °C Yes _____ No _____
Cooler seal intact upon receipt: X Yes _____ No _____

Relinquished By: (sign) NSA Time 1500 Date 3/20/09
Received By: (sign) _____ Time _____ Date: 3/27/09

Received in Laboratory By: CIR Time: 11:30 Date: 3/27/09

SAMPLE REQUEST & CHAIN OF CUSTODY FORM

19004257



Neenah: 501 W. Bell St. Neenah, WI 54956
Green Bay: 2150 Memorial Drive Suite 106 Green Bay, WI 54303

ANALYTICAL REQUESTS

PCP's

Certifications

WI DNR Cert. Lab #445023150
WI DATCP Cert. #105-205
GB-WI DNR Cert. Lab #405222620
GB-WI DATCP Cert. #105-450

CLIENT NAME / ADDRESS Wausau WWTF 435 Adrian St. Wausau, WI 54401		TURN AROUND TIME STANDARD 10 DAY: <input checked="" type="checkbox"/> RUSH (50% UPCHARGE): <input type="checkbox"/>
BILLING ADDRESS/ EMAIL 407 Grant Street, Wausau, WI 54403		DATE NEEDED: _____
REPORT TO: Dave Erickson / Ken Bloom	PO NUMBER: _____	MATRIX DW = DRINKING WATER WW = WASTEWATER GW = GROUNDWATER CW = COOLING WATER S = SOLID/SLUDGE P = PAPER F = FUEL OTHER: _____
EMAIL: Ken.Bloom@ci.wausau.wi.us	FAX: _____	
PHONE: 715-261-6940		
PROJECT NAME/ SITE: PCP Sampling - Collection System		

SAMPLE ID	SAMPLE COLLECTION		PRESERVATIVE (SEE BELOW)	MATRIX (SEE ABOVE)	GRAB or COMPOSITE	LAB USE ONLY	
	DATE	TIME				PROJECT #	SAMPLE #
MH #2	Adrian St.	3/26/19 8:26AM	NP	WW	Grab	4457	9609
MH #13		3/26/19 8:38AM	NP	WW	Grab		10
MH # 53		3/26/19 8:59AM	NP	WW	Grab		11
MH # 53		3/26/19 8:59AM	NP	WW	Grab		1
MH # 53		3/26/19 8:59AM	NP	WW	Grab		1
MH # 54		3/26/19 9:17AM	NP	WW	Grab		9612
MH # 11		3/26/19 9:21AM	NP	WW	Grab		13
MH # 6		3/26/19 9:33AM	NP	WW	Grab		14
MH # 5 (North-McCleary)		3/26/19 9:47AM	NP	WW	Grab		15
MH # 5 (West-Adrian)		3/26/19 9:50AM	NP	WW	Grab		16

PRESERVATIVE: NP=NO PRESERVATIVE, H2SO4=SULFURIC ACID, HNO3=NITRIC ACID, HCL=HYDROCHLORIC ACID, NAOH=SODIUM HYDROXIDE, ZA=ZINC ACETATE

CHAIN OF CUSTODY RECORD	
FILLED IN BY CLIENT: Ken Bloom	FILLED IN BY BADGER LABS RECEIVED BY: JT
DATE/TIME SAMPLED: 3-26-19 8:26AM - 9:50AM	DATE/TIME RECEIVED: 3/26/19 11:50
RELINQUISHED BY: Ken Bloom	LOGGED IN: /s/
DELIVERY METHOD: Badger Lab Pick-Up	ICE#: VN:
ADDITIONAL COMMENTS:	

WAUSAU WATER WORKS
407 GRANT STREET
WAUSAU, WI 54401

Project Number: 19007842
Report Date: 6/25/2019
Sampled By: CLIENT

Attn: DAVE ERICKSON/KEVIN FABEL/KEN BLOOM

Samples: 2 WASTEWATER

Sample Number: 49016919
Sample ID: MANHOLE #52
Sample Date: 6/10/2019
Date Received: 6/11/2019

Parameter	Results	Units	LOD	LOQ	Dil.	Method	Analyzed	Codes
PENTACHLOROPHENOL	SEE ATTACHED SYNERGY LAB REPORT							

Sample Number: 49016920
Sample ID: MANHOLE #53
Sample Date: 6/10/2019
Date Received: 6/11/2019

Parameter	Results	Units	LOD	LOQ	Dil.	Method	Analyzed	Codes
PENTACHLOROPHENOL	SEE ATTACHED SYNERGY LAB REPORT							

All LOD/LOQs adjusted for dilution and/or solids content.

BADGER LABORATORIES, INC.
WDNR Certified Lab #445023150
Approved By:



BLE:gr

WAUSAU WATER WORKS
407 GRANT STREET
WAUSAU, WI 54401

Project Number: 19007967
Report Date: 6/25/2019
Sampled By: CLIENT

Attn: DAVE ERICKSON, KEVIN FABEL, KEN BLOOM

Samples: 1

Sample Number: 49017233
Sample ID: MANHOLE #51
Sample Date: 6/12/2019
Date Received: 6/13/2019

Parameter	Results	Units	LOD	LOQ	Dil.	Method	Analyzed	Codes
PENTACHLOROPHENOL	SEE ATTACHED SYNERGY LAB REPORT							

All LOD/LOQs adjusted for dilution and/or solids content.

BADGER LABORATORIES, INC.
WDNR Certified Lab #445023150
Approved By:



BLE:gr

Synergy Environmental Lab, INC

1990 Prospect Ct., Appleton, WI 54914 *P 920-830-2455 * F 920-733-0631

JOHN LARSON
 BADGER LABORATORIES & ENGINEERING
 501 W BELL STREET
 NEENAH WI 54956

Report Date 21-Jun-19

Project Name
 Project #

Invoice # E36334

Lab Code 5036334A
 Sample ID 16919
 Sample Matrix Water
 Sample Date 6/10/2019

	Result	Unit	LOD	LOQ	Dil	Method	Ext Date	Run Date	Analyst	Code
Organic										
Semi Volatiles										
Pentachlorophenol (PCP)	11.6	ug/l	1.84	5.85	1	8270C	6/17/2019	6/17/2019	MJR	1
2-Fluorobiphenyl-surrogate	62	REC %			1	8270C	6/17/2019	6/17/2019	MJR	1
2-Fluorophenol-surrogate	20	REC %			1	8270C	6/17/2019	6/17/2019	MJR	1
Nitrobenzene-d5-surrogate	57	REC %			1	8270C	6/17/2019	6/17/2019	MJR	1
Phenol-d6-surrogate	11.5	REC %			1	8270C	6/17/2019	6/17/2019	MJR	1
p-Terphenyl-d14-surrogate	79	REC %			1	8270C	6/17/2019	6/17/2019	MJR	1
2,4,6-Tribromophenol-surrogate	79	REC %			1	8270C	6/17/2019	6/17/2019	MJR	1

Lab Code 5036334B
 Sample ID 16920
 Sample Matrix Water
 Sample Date 6/10/2019

	Result	Unit	LOD	LOQ	Dil	Method	Ext Date	Run Date	Analyst	Code
Organic										
Semi Volatiles										
Pentachlorophenol (PCP)	11.8	ug/l	1.84	5.85	1	8270C	6/17/2019	6/17/2019	MJR	1
2-Fluorobiphenyl-surrogate	66	REC %			1	8270C	6/17/2019	6/17/2019	MJR	1
2-Fluorophenol-surrogate	23	REC %			1	8270C	6/17/2019	6/17/2019	MJR	1
Nitrobenzene-d5-surrogate	59	REC %			1	8270C	6/17/2019	6/17/2019	MJR	1
Phenol-d6-surrogate	13.6	REC %			1	8270C	6/17/2019	6/17/2019	MJR	1
p-Terphenyl-d14-surrogate	79	REC %			1	8270C	6/17/2019	6/17/2019	MJR	1
2,4,6-Tribromophenol-surrogate	87	REC %			1	8270C	6/17/2019	6/17/2019	MJR	1

Project Name
Project #

Invoice # E36334

Lab Code 5036334C
Sample ID 17233
Sample Matrix Water
Sample Date 6/12/2019

	Result	Unit	LOD	LOQ	Dil	Method	Ext Date	Run Date	Analyst	Code
Organic										
Semi Volatiles										
Pentachlorophenol (PCP)	< 1.84	ug/l	1.84	5.85	1	8270C	6/17/2019	6/17/2019	MJR	1
2-Fluorobiphenyl-surrogate	60	REC %			1	8270C	6/17/2019	6/17/2019	MJR	1
2-Fluorophenol-surrogate	18	REC %			1	8270C	6/17/2019	6/17/2019	MJR	1
Nitrobenzene-d5-surrogate	52	REC %			1	8270C	6/17/2019	6/17/2019	MJR	1
Phenol-d6-surrogate	8.8	REC %			1	8270C	6/17/2019	6/17/2019	MJR	1
p-Terphenyl-d14-surrogate	85	REC %			1	8270C	6/17/2019	6/17/2019	MJR	1
2,4,6-Tribromophenol-surrogate	88	REC %			1	8270C	6/17/2019	6/17/2019	MJR	1

"J" Flag: Analyte detected between LOD and LOQ

LOD Limit of Detection

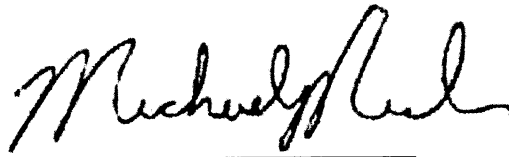
LOQ Limit of Quantitation

Code *Comment*

1 Laboratory QC within limits.

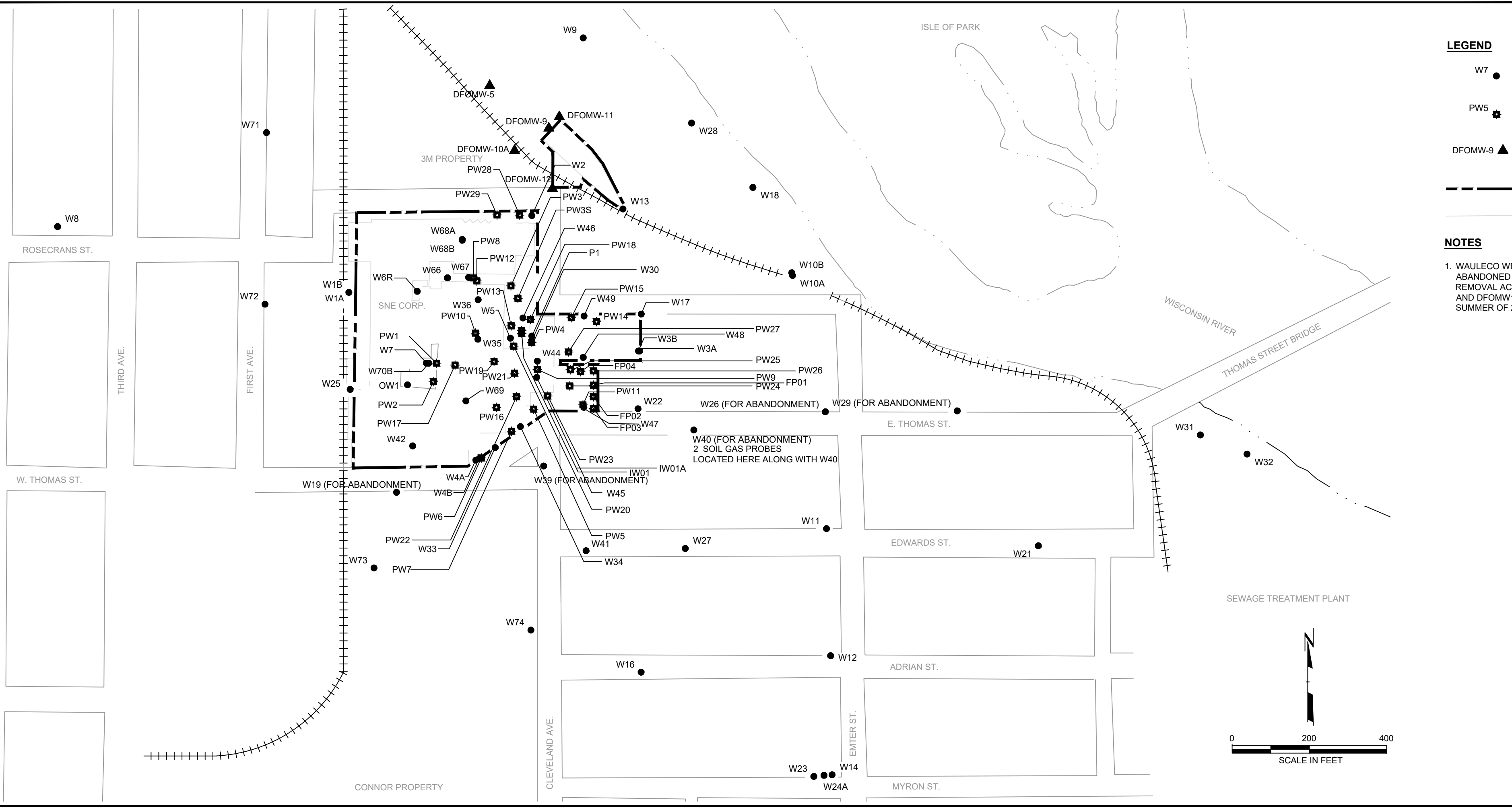
All solid sample results reported on a dry weight basis unless otherwise indicated. All LOD's and LOQ's are adjusted for dilutions but not dry weight. Subcontracted results are denoted by SUB in the analyst field.

Authorized Signature



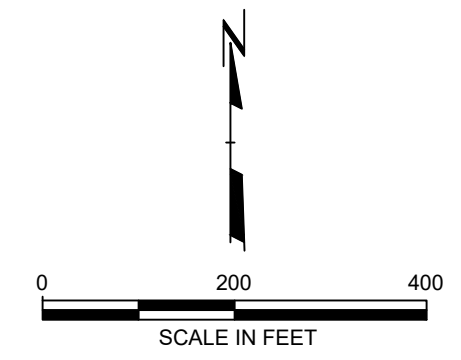
Appendix D – Locations of Monitoring Wells

T:\04 - USER BROWN - ATTACHED XREFS - ATTACHED IMAGES
 DRAWING NAME: J:\Wauleco\189597 - Annual 2019\0008 - Annual 2019\0008 - 189597.0008.02.dwg - PLOT DATE: March 11, 2019 - 4:04PM - LAYOUT: DRAWING 2 SITE FEATURES MAP
 Version: 2017-10-21



- LEGEND**
- W7 ● MONITORING WELL LOCATION AND NUMBER
 - PW5 ■ EXTRACTION WELL LOCATION AND NUMBER
 - DFOMW-9 ▲ (3M) GROUNDWATER MONITORING WELL AND NUMBER
 - APPROXIMATE PROPERTY LINE
 - FORMER BUILDING OUTLINE

- NOTES**
1. WAULECO WELLS PW02 AND W70B WERE ABANDONED ON 7/21/16 DURING SOIL MOUND REMOVAL ACTIVITIES BY TRC. 3M WELLS DFOMW9 AND DFOMW10A WERE ABANDONED BY 3M IN THE SUMMER OF 2015.



PROJECT:		WAULECO, INC.	
		ANNUAL GROUNDWATER MONITORING REPORT	
		WAUSAU, WISCONSIN	
TITLE:			
WORKING COPY			
DRAWN BY:	B. YUNUSOV	PROJ NO.:	189597 - ANNUAL REPORT
CHECKED BY:	K. QUINN		
APPROVED BY:		DRAWING 2	
DATE:	MARCH 2019		
FILE NO.:		189597.0008.02.dwg	
		708 Heartland Trail Suite 3000 Madison, WI 53717 Phone: 608.826.3600	

Appendix E – Recorded Groundwater Levels

10 Years of Groundwater Elevation Data in Area of Thomas Street
 Wauleco Project Site
 7/2/2019

Date	Monitoring Well								
	W10A	W11	W12	W18	W21	W26	W29	W31	W40
1/20/09	1160.84	1160.66	1160.38	1160.74	1160.63	1160.84	1160.72	1160.76	1160.75
4/24/09	1160.95	1160.87	1160.57	1160.87	1160.76	1160.95	1160.80	1160.79	1160.74
7/28/09	1160.82	1160.70	1160.40	1160.73	1160.63	1160.85	1160.68	1160.72	1160.44
10/20/09	1160.71	1160.70	1160.43	1160.74	1160.65	1160.69	1160.68	1160.73	1160.57
11/18/09									1161.41
12/17/09									1161.32
1/13/10	1160.83	1160.75	1160.46	1160.88	1160.67	1160.77	1160.75	1160.80	1161.17
4/22/10	1160.79	1160.76	1160.50	1160.80	1160.67	1160.76	1160.71	1160.75	1161.18
7/12/10	1161.01	1160.92	1160.61	1160.99	1160.73	1160.94	1160.79	1160.77	1162.07
10/8/10	1161.43	1161.43	1161.00	1161.07	1160.93	1161.34	1160.94	1160.76	1163.12
1/12/11	1161.06	1160.90	1160.53	1161.13	1160.78	1160.97	1160.89	1160.92	1161.44
2/24/11									
3/15/11	1161.11		1160.56	1161.13		1161.01			1162.30
4/5/11	1161.49	1161.42	1161.01	1161.39	1161.17	1161.39	1161.20	1161.08	1163.15
5/26/11	1161.57		1161.00	1161.32		1161.45			1164.59
6/23/11									
7/26/11	1161.01	1161.12	1160.74	1161.07	1160.77	1161.07	1160.79	1160.76	1162.41
8/31/11	1161.06	1161.02	1160.65	1161.01		1161.01			1162.23
9/28/11	1161.09	1161.08	1160.73	1161.13		1161.07			1162.63
10/24/11	1160.92	1160.92	1160.60	1160.94	1160.77	1160.92	1160.80	1160.79	1161.45
11/21/11	1160.77	1160.79	1160.49	1160.83		1160.80			1161.12
12/19/11	1160.80	1160.82	1160.52	1160.85		1160.83			1161.00
1/16/12	1160.77	1160.75	1160.45	1160.80	1160.67	1160.78	1160.72	1160.74	1160.85
2/16/12	1160.72	1160.70	1160.41	1160.79		1160.73			1160.68
3/15/12	1161.73	1161.29	1160.93	1162.18		1161.33			1160.97
4/27/12	1160.85	1160.85	1160.55	1160.87	1160.74	1160.84	1160.77	1160.79	1161.02
5/24/12	1160.83	1160.83	1160.52	1160.83		1160.83			1161.24
6/19/12	1161.11	1160.96	1160.65	1161.38		1160.97			1161.24
7/24/12	1160.91	1160.85	1160.55	1160.99	1160.76	1160.88	1160.81	1160.82	1161.32
8/17/12	1160.91	1160.84	1160.54	1160.98		1160.88			1161.15
9/25/12	1160.87	1160.81	1160.50	1160.98		1160.86			1160.96
10/17/12	1160.85	1160.88	1160.58	1160.93	1160.83	1160.90	1160.97	1160.85	1160.91
11/15/12	1160.94	1160.95	1160.65	1160.94		1160.95			1161.29
12/18/12	1160.85	1160.85	1160.58	1160.89		1160.86			1161.05
1/15/13	1160.77	1160.78	1160.53	1160.79	1160.73	1160.79	1160.75	1160.76	1160.82
2/25/13	1160.75		1160.47	1160.83		1160.76			1160.63
3/29/13	1160.80		1160.54	1160.92		1160.79			
4/24/13	1162.17	1161.80	1161.36	1162.47	1161.72	1161.81	1162.08	1161.87	1162.32
5/21/13	1161.34		1160.96	1161.18		1161.27			1162.20
6/13/13	1161.63	1161.54	1161.14	1161.38		1161.53			1162.48
7/15/13	1161.29	1161.23	1160.86	1161.18	1160.95	1161.24	1160.96	1160.84	1162.37
8/27/13	1161.01		1160.65	1161.08		1160.99			1161.39
9/20/13	1160.92		1160.58	1160.98		1160.90			1161.27
10/22/13	1160.99	1160.94	1160.63	1161.01	1160.83	1160.95	1160.84	1160.82	1161.49
11/19/13	1160.95		1160.62	1160.92		1160.94			1161.37
12/19/13	1160.93		1160.57	1161.02		1160.90			1161.21
1/20/14	1160.93	1160.86	1160.59	1160.98	1160.75	1160.88	1160.83	1160.85	1161.13

Date	Monitoring Well								
	W10A	W11	W12	W18	W21	W26	W29	W31	W40
2/18/14	1160.93		1160.59	1160.99		1160.89			1161.09
3/20/14	1160.99		1160.66	1161.09		1160.97			1161.12
4/25/14	1162.00	1161.68	1161.19	1162.04	1161.49	1161.69	1161.64	1161.60	1162.38
5/21/14	1161.90		1161.13	1161.87		1161.66			1162.68
6/19/14	1161.22		1160.76	1161.10		1161.14			1162.29
7/17/14	1161.08	1161.03	1160.66	1161.05	1160.83	1161.08	1160.87	1160.82	1161.97
8/15/14	1160.91		1160.53	1160.95		1160.89			1161.51
9/25/14	1161.32		1160.86	1161.16		1161.28			1162.67
10/20/14	1161.42	1161.36	1160.98	1161.33	1161.07	1161.33	1161.11	1160.99	1162.46
11/25/14	1161.67		1160.83	1162.09		1161.32			1161.87
12/22/14	1161.66		1160.96	1161.68		1161.48			1162.05
1/21/15	1161.55	1161.26	1160.81	1161.61	1161.19	1161.36	1161.32	1161.32	1161.83
4/27/15	1161.16	1161.13	1160.76	1161.07	1160.96	1161.14	1160.99	1160.94	1161.65
7/14/15	1161.14	1161.09	1160.72	1161.14	1160.95	1161.11	1160.98	1160.91	1161.93
10/30/15	1160.97	1160.93	1160.61	1161.07	1160.89	1160.96	1160.93	1160.94	1161.25
1/25/16	1161.34	1161.15	1160.75	1161.43	1161.08	1161.21	1161.13	1161.15	1161.79
4/26/16	1161.70	1161.39	1160.94	1162.01	1161.27	1161.45	1161.49	1161.59	1162.33
7/19/16	1160.98	1160.94	1160.58	1160.98	1160.78	1160.98	1160.81	1160.79	1161.63
9/8/16		1161.07	1160.70		1161.06				
9/27/16		1160.90	1160.60		1160.52				
9/30/16									
10/3/16									
10/6/16									
10/10/16									
10/14/16									
10/17/16									
10/21/16									
10/25/16									
10/28/16									
11/1/16									
11/4/16									
11/7/16									
11/10/16									
11/14/16									
11/18/16									
11/21/16									
11/23/16									
11/28/16									
12/2/16	1161.00	1160.50	1160.14		1160.86		1161.01		
12/5/16	1160.95	1160.64	1160.26		1160.81		1160.92		
12/9/16	1160.90	1160.67	1160.30		1160.80		1160.89		
12/20/16	1161.19	1160.81	1160.40		1160.98		1161.14		
1/9/17	1161.23	1160.83	1160.43	1161.47	1160.93	1161.11	1161.12	1161.28	1160.95
4/24/17	1162.38	1161.93	1161.30	1162.19	1161.66	1161.96	1161.80	1161.63	1162.74
7/7/17	1161.46	1161.36	1160.91	1161.36	1161.12	1161.49	1161.13	1161.04	1162.57
10/12/17	1161.15	1161.12	1160.73	1161.22	1160.99	1161.15	1161.03	1160.98	1161.63
1/8/18	1161.25	1161.05	1160.65	1161.41	1161.04	1161.14	1161.17	1161.22	1161.18
4/20/18	1161.35	1161.27	1160.86	1161.46	1161.26	1161.32	1161.32	1161.32	1161.34
7/9/18	1161.23	1161.15	1160.71	1161.21	1160.95	1161.27	1160.99	1160.99	1161.67
10/18/18	1161.90	1161.81	1161.30	1161.79	1161.42	1161.81	1161.46	1161.32	1163.22
1/4/19	1161.34	1161.23	1160.84	1161.31	1161.10	1161.27	1161.16	1161.12	1161.75

Date	Monitoring Well								
	W10A	W11	W12	W18	W21	W26	W29	W31	W40
4/24/19	1163.52	1162.66	1161.92	1163.51	1162.36			1162.62	
5/10/19	1162.51	1162.06	1161.49	1162.77	1161.81			1162.05	
Average	1161.20	1161.08	1160.71	1161.24	1160.99	1161.10	1161.02	1161.06	1161.66
Low	1160.71	1160.50	1160.14	1160.73	1160.52	1160.69	1160.68	1160.72	1160.44
High	1163.52	1162.66	1161.92	1163.51	1162.36	1161.96	1162.08	1162.62	1164.59

Notes:

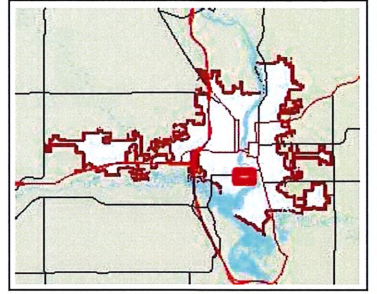
¹ Test results from 6/23/2011 were removed. Results were abnormally high due to water main break.

² Test results from 9/30/16 - 11/28/16 were removed. Results were abnormally low due to lowering of Lake Wausau.

Appendix F – Detected PCP in Manholes



DPW Mapping System



- Legend**
- Parcels
 - ▭ Section Lines/Numbers
 - ▭ Right Of Ways
 - Manhole
 - Gravity Main
 - Collector
 - Interceptor
 - ▶ Force Main
 - ⊕ Liftstation
 - Abandoned Gravity Main
 - Railroad

1-8-19; PCP <LOD
MH7

1-8-19; PCP 17.8ppb
3-26-19; PCP <LOD
MH6

1-8-19; PCP 6ppb
3-26-19; PCP 21.7ppb
6-10-19; PCP 11.8ppb
MH53

3-26-19; PCP 19.3ppb
MH54

1-8-19; PCP <LOD
3-26-19; PCP <LOD
MH 162

6-12-19; PCP <LOD
MH 51

6-10-19; PCP 11.6ppb
MH 52

3-26-19; PCP 22.9ppb
MH2

1-8-19 (flow from North); PCP 8.9ppb
1-8-19 (flow from west); PCP 22.4ppb
3-26-19 (flow from North); PCP <LOD
3-26-19 (flow from west); PCP 29.3ppb
MH5

3-26-19; PCP <LOD
MH13

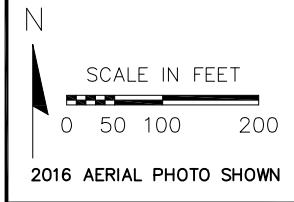
Map Created: 5/8/2019
100.00 0 100.00 Feet
NAD_1983_HARN_WISCRS_Marathon_County_Feet

DISCLAIMER: The information and depictions herein are for informational purposes only. The County-City of Wausau specifically disclaims accuracy in this reproduction and specifically admonishes and advises that if specific and precise accuracy is required, the user should consult with a professional surveyor or engineer. This map is not to be used for navigation.

Notes

Appendix G – Groundwater Elevation in Study Area

D:\Engineering\DWG\PROJ\1036\DWG\1036_InterceptorSewer_PlanAndProfile.dwg, 9/3/2019 9:57:53 AM, City of Wausau - Engineering Department, Plotted by: J.D. VanBoxel



CITY OF WAUSAU
 Engineering Department
 407 GRANT STREET WAUSAU, WI 54403-4793
 (715) 261-6740 FAX (715) 261-6759

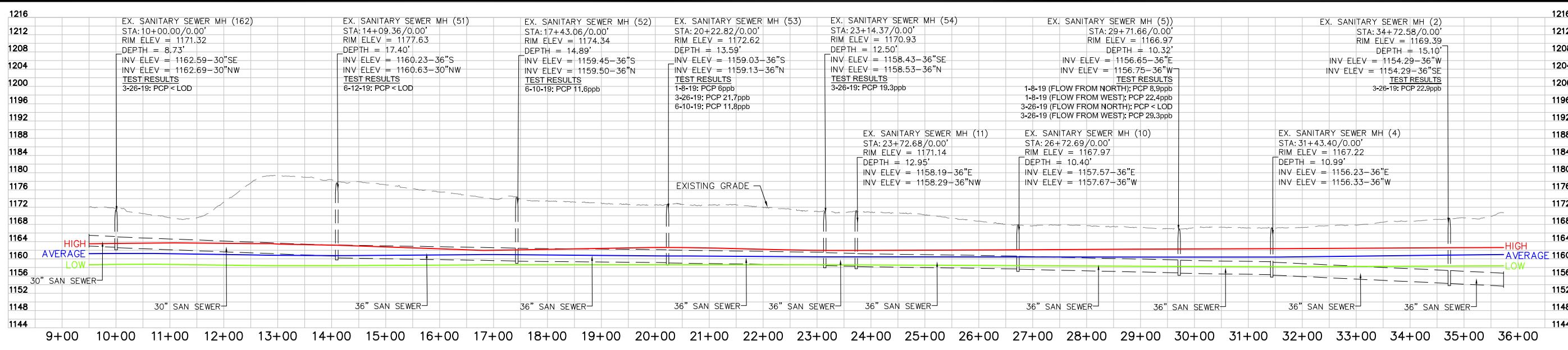
SURVEYED BY: ENG. DEPT.
 FIELD BOOK NO. PG.
 DESIGNED BY: J.D.VANBOXEL
 DRAWN BY: J.D.VANBOXEL
 APPROVED BY:
 POINT FILE:

REVISIONS
 J.D.VANBOXEL

DATE
 07/09/2019

ISSUED FOR
 PRELIMINARY
 REVIEW/APPROVAL
 BIDDING/CONST.
 REC. REF. DWG.
 OFFICE USE

GROUNDWATER ELEVATIONS
 RIVERSIDE PARK TO WWTP
 INTERCEPTOR SEWER PLAN AND PROFILE



SHEET NO.
1
 OF 1 SHEETS
 FILE NUMBER
19-08-29

Clark Dietz, Inc.
500 North 3rd Street, Suite 703
Wausau, WI 54403

p 715.845.1333

clarkdietz.com

Clark>Dietz

Engineering Quality of Life™



TO: Wausau Waterworks Commission

FROM: Eric Lindman, P.E.
Director of Public Works & Utilities

DATE: September 2, 2025

SUBJECT: Solar Array Project and Tax Credits

The Inflation Reduction Act and other energy policies have changed with the new tax bill at the federal level, and they will be phased out. To access the tax credits construction must commence prior to certain deadlines to be eligible and they are outlined below

Our understanding of the new tax bill for commercial solar projects is that:

- If the project commences construction by December 31, 2025, then the project is eligible for the 30% tax credit and must be placed in service by the end of 2029.
- If the project commences construction between January 1, 2026 and July 4, 2026, you are still eligible for the tax credit, but your project would need to meet new FEOC (Federal Entity of Concern) requirements and be placed in service by the end of 2030.
- If the project commences construction after July 4, 2026, you are still eligible for the tax credit, but your project would need to meet new FEOC requirements and be placed in service by the end of 2027

Meeting FEOC requirements would necessitate using specific solar equipment, and we expect to be able to meet the standards, there is some uncertainty (and associated risks) in qualifying equipment availability, cost, etc. For this project, being placed in service by 2028 (or 2030 would not be an issue).

The definition of "commence construction" currently means starting physical work of a significant nature or spending at least 5% of the total project cost. However, this definition is being reevaluated via current executive order (more info is expected to be released very soon and hopefully will have some clarity).

Further details will likely be forthcoming, but this tightens up the construction schedule for the project.



Planning, Community and Economic Development

Date: September 2, 2025

To: Wausau Water Works Commission

From: Carrie Edmondson, AICP, Assistant City Planner on behalf of the Sustainability, Energy, and Environment Committee (SEEC)

RE: Expression of Support for the Solar Array at the Wausau Water Treatment Facility and Recommendation of Approval of the Solar Array

The Sustainability, Energy, and Environment Committee (SEEC) wishes to express their support for the freestanding solar project on the new Wausau Water Treatment Facility property located at 1801 Burek Avenue and recommends approval of the solar structure. SEEC has been supportive of the project throughout the process and recommends approving the construction of the project.

A five-member Solar Array Task Force, previously formed by Common Council, has reviewed and provided an analysis that was covered in two presentations. More information can be found on the City's website. A conceptual design and analysis were presented on April 19, 2024. In 2024, SEEC organized a petition of those in support of the project and collected a total of 179 signatures. SEEC was under time limitations when collecting signatures and feels that more could have been collected quite readily. They have also drafted a letter of support, which they approved unanimously at their August 7 meeting. Both the letter of support and petition are included for the Wausau Water Works Commission's review.

In summary, SEEC is fully supportive of the installation of the solar array at the Wausau Water Treatment Facility and identifies it as a strong priority for the upcoming budget cycle.



August 7, 2025

To: Wausau Water Works Commission

From: City of Wausau Sustainability, Energy and Environment Committee (SEEC)

Re: Letter of support for the Solar Array at the Water Treatment Plant

SEEC fully supports the installation of a Solar Array at the Drinking Water Treatment Plant and identifies this as a strong priority for the upcoming budget cycle for the following reasons:

- On March 14, 2023, the City Council passed a Greenhouse Gas Reduction Resolution focused on moving towards cleaner energy.
<https://wausapilotandreview.com/2023/03/15/wausau-passes-clean-energy-resolution/>
- The Solar Array Task Force indicated the City would benefit financially from the Array.
- Federal dollars through the Inflation Reduction Act (IRA) will be available for solar projects which begin construction before July 2026.
- This project will build infrastructure that is forward-facing and fiscally responsible, giving the city more options for meeting the needs of residents.

Other reasons include:

Community support:

- Not only will the Array help to stabilize water bills, but it creates a fiscally and environmentally responsible action step towards the Greenhouse Gas Reduction Resolution passed by the City Council.
- Attached is a petition signed by citizens in support of the array. This petition was submitted in August of 2024 in an effort to show community support for the Array following the Solar Array Task Force's report.

Stabilizing Water Bills:

Electricity to run the drinking water treatment plant is a large portion of operating expenses. While past inflation in electric utility rates has been around 3%, *more recent local percentage increases have been double digits per year*, and will likely continue to be high due to increasing demand, aging infrastructure, international trade instability, and focus on more expensive fossil fuel sources. ***A solar array would stabilize this cost, reducing the need for future water rate increases.***

Energy Resiliency:

- The Solar Array is a cornerstone to developing resiliency in provision of potable drinking water to the city population.
- The array will be constructed with the ability to add batteries at a future date, which would allow the plant to be run off grid in the event of an extended grid outage, albeit at reduced capacity. This would reduce dependence on the existing diesel generator system in place.
- It has been noted that as the global temperature continues to warm, a large portion of the US will experience dangerous temperatures and severe weather, while our area will continue to experience a relatively stable climate for some time. ***We should anticipate in-migration in the coming decades and position our community infrastructure for growth and resilience.***

In conclusion, SEEC fully supports the installation of a Solar Array at the Drinking Water Treatment Plant and identifies this as a strong priority for the upcoming budget cycle because it is a forward-facing and fiscally responsible 'next step' giving the city more option for meeting the needs of residents.

Thank you for your time,



Jean Abreu

Chair; Sustainability, Energy and Environment Committee

PETITION

For Office Use

TO THE MAYOR AND COMMON COUNCIL
OF THE CITY OF WAUSAU, WISCONSIN

A Petition For:

Date Filed with City Clerk

- | | | | |
|--|--|--|---|
| <input type="checkbox"/> Alley Vacation | <input type="checkbox"/> Sanitary Sewer | <input type="checkbox"/> Storm Sewer | <input checked="" type="checkbox"/> Other as Follows: |
| <input type="checkbox"/> Blacktop Paving | <input type="checkbox"/> Street Light | <input type="checkbox"/> Watermain | <u>Construct Solar Array at Drinking Water</u> |
| <input type="checkbox"/> Curb and Gutter | <input type="checkbox"/> Street Vacation | <input type="checkbox"/> Zoning Change | |

Treatment Plant

The undersigned petitioners respectfully request that your honorable body take such action as will cause the:

Please proceed with construction of the Solar Array at the drinking water treatment plant. This subsidized, income-producing asset will reduce water bills for City of Wausau customers, reduce our carbon footprint, and increase resilience of our water supply. Savings are projected at \$2.2 million over the cost of construction! Act now for best grant opportunities.

Signature of Electors	Print Name Clearly	Print Home Address	Date of Signing
1. <i>Michael O'Hara</i>	Michael O'Hara	1605 Forest Valley Rd	8-9-24
2. <i>Jane A Rusch</i>	Jane A Rusch	4522 Forest Valley Rd	8-9-24
3. <i>Kathleen Klus</i>	Kathleen Klusendorf	4514 Forest Valley	8-9-24
4. <i>Diane Worden</i>	Diane Worden	4412 Forest Valley	8-9-24
5. <i>Mary Brummond</i>	Mary Brummond	4405 Forest Valley	8-9-24
6. <i>John Cayley</i>	John Cayley	1521 Forest Valley Rd	8-9-24
7. <i>Joanne Diestelhorst</i>	Joanne Diestelhorst	1213 Washington St	8-11-24
8. <i>Vern Diestelhorst</i>	Vern Diestelhorst	1213 Washington	8-11-24
9. <i>Bruce Knox</i>	Bruce Knox	4002 Crestwood Dr	8/11/24
10. <i>Kathryn Knox</i>	Bruce Kathryn Knox	4002 Crestwood Dr	8/11/24
11. <i>Allan G. Solomonson</i>	Allan G. Solomonson	1016 Nina Ave	8/11/24
12. <i>Lakonne Solomonson</i>	Lakonne Solomonson	1016 Nina Ave	8/11/24
13. <i>Richard J. Lohr</i>	Richard Lohr	16 Fulton St, Apt 302	8/11/24
14. <i>Cheryl Rocheleau</i>	Cheryl Rocheleau	4003 Carl St	8/11/24
15. <i>Michael Rocheleau</i>	Michael Rocheleau	4003 Carl St	8/11/24

AFFIDAVIT OF CIRCULATOR

STATE OF WISCONSIN
CITY OF WAUSAU Dan Zinsmeister being duly sworn disposes and says that he is a resident of the affected area, residing at 1415 Forest Valley Rd. in the City of Wausau; that he is personally acquainted with the persons who have signed the foregoing petition; that he knows them to be residents of the affected area; that they signed the same with full knowledge of the contents thereof; that their respective residents are stated therein; that each signer signed the same on the date stated opposite his name; and that he intends to support the petition.

Filed in the Office of the City Clerk and sworn to before me this 31 day of August, 2024

Phillips J. Beronde
Signature of City Clerk or designee

Dan Zinsmeister
(Signature of Circulator)

1415 FOREST VALLEY RD
(Address of Circulator)

PETITION

For Office Use

TO THE MAYOR AND COMMON COUNCIL
OF THE CITY OF WAUSAU, WISCONSIN

A Petition For:

Date Filed with City Clerk

- | | | | |
|--|--|--|---|
| <input type="checkbox"/> Alley Vacation | <input type="checkbox"/> Sanitary Sewer | <input type="checkbox"/> Storm Sewer | <input checked="" type="checkbox"/> Other as Follows: |
| <input type="checkbox"/> Blacktop Paving | <input type="checkbox"/> Street Light | <input type="checkbox"/> Watermain | <u>Construct Solar Array at Drinking Water</u> |
| <input type="checkbox"/> Curb and Gutter | <input type="checkbox"/> Street Vacation | <input type="checkbox"/> Zoning Change | |

Treatment Plant

The undersigned petitioners respectfully request that your honorable body take such action as will cause the:

Please proceed with construction of the Solar Array at the drinking water treatment plant. This subsidized, income-producing asset will reduce water bills for City of Wausau customers, reduce our carbon footprint, and increase resilience of our water supply. Savings are projected at \$2.2 million over the cost of construction! Act now for best grant opportunities.

Signature of Electors	Print Name Clearly	Print Home Address	Date of Signing
<i>Joyce Lohr</i>	Joyce Lohr	16 Fulton St, Apt 302	8/11/24
<i>Jean Pflieger</i>	JEAN PFLIEGER	1806 Plato St Wausau	8/11/24
<i>Thomas Schmidt</i>	Thomas Schmidt	1806 Plato St. Wausau	8/11/24
<i>Victoria Lange</i>	Victoria Lange	4525 Forest Valley Rd	8/12/24
<i>Nathaniel Retrum</i>	Nathaniel Retrum	4510 Forest Valley Rd	8/12/24
<i>Karla Retrum</i>	Karla Retrum	4510 Forest valley Rd	8/12/2024
<i>Pat Huganin</i>	PAT HUGANIN	1445 MARQUAEDT RD.	8-12-24
<i>Mary Suearing</i>	MARY SUEARING	14312 Briarwood	8-12-24
<i>Rita Pachal</i>	Rita Pachal	1310 Maple Hill Rd	8/12/24
<i>Milton Pachal</i>	Milton Pachal	1310 Maple Hill Rd	8/12/24
<i>Kay Thompson</i>	Kay Thompson	1311 E. Forest Rd	8/12/24
<i>Savannah Sykes</i>	Savannah Sykes	1807 Marquardt Rd	8/12/24
<i>Van Syke</i>	Van Syke	1807 Marquardt Rd	8/12/24
<i>Dana Kulas</i>	Dana Kulas	1502 Woodlawn Rd	8/12/24
<i>Dan Zinsmeister</i>	DAN ZINSMEISTER	1415 FOREST VALLEY RD.	8/12/24

AFFIDAVIT OF CIRCULATOR

STATE OF WISCONSIN
CITY OF WAUSAU Dan Zinsmeister being duly sworn disposes and says that he is a resident of the affected area, residing at 1415 Forest Valley Rd. in the City of Wausau; that he is personally acquainted with the persons who have signed the foregoing petition; that he knows them to be residents of the affected area; that they signed the same with full knowledge of the contents thereof; that their respective residents are stated therein; that each signer signed the same on the date stated opposite his name; and that he intends to support the petition.

Filed in the Office of the City Clerk and sworn to before me this 31 day of August, 2024

Kathryn J. Bonrade
Signature of City Clerk or designee

Dan Zinsmeister
(Signature of Circulator)

1415 FOREST VALLEY RD
(Address of Circulator)

PETITION

For Office Use

TO THE MAYOR AND COMMON COUNCIL OF THE CITY OF WAUSAU, WISCONSIN

A Petition For:

Date Filed with City Clerk

- | | | | |
|--|--|--|---|
| <input type="checkbox"/> Alley Vacation | <input type="checkbox"/> Sanitary Sewer | <input type="checkbox"/> Storm Sewer | <input checked="" type="checkbox"/> Other as Follows: |
| <input type="checkbox"/> Blacktop Paving | <input type="checkbox"/> Street Light | <input type="checkbox"/> Watermain | <u>Construct Solar Array at Drinking Water</u> |
| <input type="checkbox"/> Curb and Gutter | <input type="checkbox"/> Street Vacation | <input type="checkbox"/> Zoning Change | |

Treatment Plant

The undersigned petitioners respectfully request that your honorable body take such action as will cause the:

Please proceed with construction of the Solar Array at the drinking water treatment plant. This subsidized, income-producing asset will reduce water bills for City of Wausau customers, reduce our carbon footprint, and increase resilience of our water supply. Savings are projected at \$2.2 million over the cost of construction! Act now for best grant opportunities.

Signature of Electors	Print Name Clearly	Print Home Address	Date of Signing
1. <i>Theresa Noel Tanner</i>	Theresa Noel Tanner	317 N. 1st St. Apt 4 WAUSAU	8/29/2024
2. <i>Jim Wallace</i>	JAMES WALLACE	2402 6th St WAUSAU	8-29-2024
3. <i>Casey L Wilson</i>	Casey L Wilson	605 Ross Ave.	8-29-2024
4. <i>Kinisha Stoner</i>	Kinisha Stoner	631 Nina Ave.	8-29-24
5. <i>Liberty L Herdman</i>	Liberty L Herdman	605 Ross Ave	8/29/2024
6. <i>Veronica Hope</i>	VERONICA HOPE	718 N. 5th Ave.	8/29/2024
7. <i>Matthew Watson</i>	MATTHEW WATSON	412 N 5th AVE	8/29/2024
8. <i>Mary Susan English</i>	MARY Susan English	1045 S. Austin Ave WAUSAU	8-29-24
9. <i>Lisa Jindrich</i>	Lisa Jindrich	3134 Riverview Court	8-29-24
10. <i>Alaina Grotzch</i>	Alaina Grotzch	1215 Arthur St	8/29/24
11.			
12.			
13.			
14.			
15.			

AFFIDAVIT OF CIRCULATOR

STATE OF WISCONSIN
CITY OF WAUSAU Jean Abreu being duly sworn disposes and says that he is a resident of the affected area, residing at 1233 Jackson St in the City of Wausau; that he is personally acquainted with the persons who have signed the foregoing petition; that he knows them to be residents of the affected area; that they signed the same with full knowledge of the contents thereof; that their respective residents are stated therein; that each signer signed the same on the date stated opposite his name; and that he intends to support the petition.

Filed in the Office of the City Clerk and sworn to before me this 31 day of August, 2024

Kathleen J. Berner
Signature of City Clerk or designee

Jean Abreu
(Signature of Circulator)

1233 Jackson St
(Address of Circulator)

PETITION

For Office Use

TO THE MAYOR AND COMMON COUNCIL
OF THE CITY OF WAUSAU, WISCONSIN.

A Petition For:


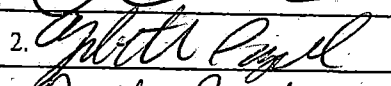
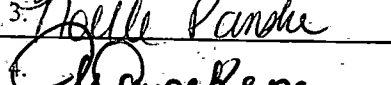
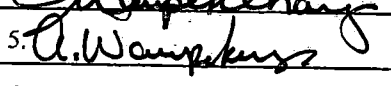
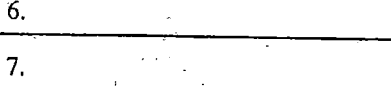
Date Filed with City Clerk

- | | | | |
|--|--|--|---|
| <input type="checkbox"/> Alley Vacation | <input type="checkbox"/> Sanitary Sewer | <input type="checkbox"/> Storm Sewer | <input checked="" type="checkbox"/> Other as Follows: |
| <input type="checkbox"/> Blacktop Paving | <input type="checkbox"/> Street Light | <input type="checkbox"/> Watermain | |
| <input type="checkbox"/> Curb and Gutter | <input type="checkbox"/> Street Vacation | <input type="checkbox"/> Zoning Change | <u>Construct Solar Array at Drinking Water</u> |

Treatment Plant

The undersigned petitioners respectfully request that your honorable body take such action as will cause the:

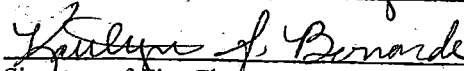
Please proceed with construction of the Solar Array at the drinking water treatment plant. This subsidized, income-producing asset will reduce water bills for City of Wausau customers, reduce our carbon footprint, and increase resilience of our water supply. Savings are projected at \$2.2 million over the cost of construction! Act now for best grant opportunities.

Signature of Electors	Print Name Clearly	Print Home Address	Date of Signing
1. 	Ciara Clifford	2435 Grand Ave Apt 7	8-19-24
2. 	Elizabeth Pagel	525 E Union Ave	8-19-24
3. 	Noelle Panske	2216 N. 6th St	8/19/24
4. 	Solene Wampelaney	617 Humboldt Ave	8-29-24
5. 	Andrew Wampelaney	617 Humboldt Ave	8-29-24
6.			
7.			
8.			
9.			
10.			
11.			
12.			
13.			
14.			
15.			

AFFIDAVIT OF CIRCULATOR

STATE OF WISCONSIN
CITY OF WAUSAU Jean Abreu being duly sworn disposes and says that he is a resident of the affected area, residing at 1233 Jackson St in the City of Wausau; that he is personally acquainted with the persons who have signed the foregoing petition; that he knows them to be residents of the affected area; that they signed the same with full knowledge of the contents thereof; that their respective residents are stated therein; that each signer signed the same on the date stated opposite his name; and that he intends to support the petition.

Filed in the Office of the City Clerk and sworn to before me this 31 day of August, 2024


Signature of City Clerk or designee

Jean Abreu
(Signature of Circulator)

1233 Jackson St Wausau
(Address of Circulator)

PETITION

For Office Use

TO THE MAYOR AND COMMON COUNCIL
OF THE CITY OF WAUSAU, WISCONSIN

A Petition For:

Date Filed with City Clerk

- Alley Vacation
- Blacktop Paving
- Curb and Gutter
- Sanitary Sewer
- Street Light
- Street Vacation
- Storm Sewer
- Watermain
- Zoning Change
- Other as Follows:

construct solar array at drinking water treatment plant

The undersigned petitioners respectfully request that your honorable body take such action as will cause the:

Please proceed with construction of the solar array at the drinking water treatment plant. This subsidized, income-producing asset will reduce water bills for City of Wausau customers, reduce our carbon footprint, and increase resilience of our water supply. Savings are projected at \$2.2 million over the cost of construction. Act now for best grant opportunities.

Signature of Electors	Print Name Clearly	Print Home Address	Date of Signing
1. <i>Casey Kautza</i>	Casey Kautza	729 E Bridge St	13-Aug-2024
2. <i>Pauline Zweck</i>	Pauline Zweck	122 Broadway Ave Wausau	8/21/24
3. <i>Sally F Decker</i>	Sally F Decker	936 Kent St, Wausau	8/21/24
4. <i>Michelle VanKrew</i>	Michelle VanKrew	2413 Oakwood Blvd Wausau	8/21/24
5. <i>Mary A Kluz</i>	Mary A Kluz	127 Kent St	8/21/24
6.			
7.			
8.			
9.			
10.			
11.			
12.			
13.			
14.			
15.			

AFFIDAVIT OF CIRCULATOR

STATE OF WISCONSIN
CITY OF WAUSAU Mary Kluz being duly sworn disposes and says that he is a resident of the affected area, residing at 127 Kent St in the City of Wausau; that he is personally acquainted with the persons who have signed the foregoing petition; that he knows them to be residents of the affected area; that they signed the same with full knowledge of the contents thereof; that their respective residents are stated therein; that each signer signed the same on the date stated opposite his name; and that he intends to support the petition.

Filed in the Office of the City Clerk and sworn to before me this 31 day of August, 2024

Katherine J. Bernhardt
Signature of City Clerk or designee

Mary Kluz
(Signature of Circulator)
127 Kent St Wausau 54403
(Address of Circulator)

PETITION

For Office Use

TO THE MAYOR AND COMMON COUNCIL
OF THE CITY OF WAUSAU, WISCONSIN

A Petition For:

Date Filed with City Clerk

- | | | | |
|--|--|--|---|
| <input type="checkbox"/> Alley Vacation | <input type="checkbox"/> Sanitary Sewer | <input type="checkbox"/> Storm Sewer | <input checked="" type="checkbox"/> Other as Follows: |
| <input type="checkbox"/> Blacktop Paving | <input type="checkbox"/> Street Light | <input type="checkbox"/> Watermain | <u>Construct Solar Array at Drinking Water</u> |
| <input type="checkbox"/> Curb and Gutter | <input type="checkbox"/> Street Vacation | <input type="checkbox"/> Zoning Change | |

Treatment Plant

The undersigned petitioners respectfully request that your honorable body take such action as will cause the:

Please proceed with construction of the Solar Array at the drinking water treatment plant. This subsidized, income-producing asset will reduce water bills for City of Wausau customers, reduce our carbon footprint, and increase resilience of our water supply. Savings are projected at \$2.2 million over the cost of construction! Act now for best grant opportunities.

Signature of Electors	Print Name Clearly	Print Home Address	Date of Signing
1. <i>Matthew Brady</i>	MATTHEW BRADY	514 BURNS ST WAUSAU	8-9-24
2. <i>Elizabeth Burke</i>	Elizabeth Burke	5907 Old Coach Rd Wausau	8-9-24
3. <i>Laura Brewer</i>	Laura Brewer	226020 Deer Tail Ln	8/14/24
4. <i>Jeffrey H. Lamont</i>	JEFFREY H. LAMONT	1201 EASTHILL DRIVE	8/26/2024
5. <i>Charles MacCarthy</i>	Charles MacCarthy	2105 Ridgeview DR.	8/26/24
6. <i>Peggy MacCarthy</i>	Peggy MacCarthy	2105 Ridgeview Dr.	8/26/24
7.			
8.			
9.			
10.			
11.			
12.			
13.			
14.			
15.			

AFFIDAVIT OF CIRCULATOR

STATE OF WISCONSIN
CITY OF WAUSAU Christine Daniels being duly sworn disposes and says that he is a resident of the affected area, residing at 511 Chicago Ave Wausau, WI 54403 in the City of Wausau; that he is personally acquainted with the persons who have signed the foregoing petition; that he knows them to be residents of the affected area; that they signed the same with full knowledge of the contents thereof; that their respective residents are stated therein; that each signer signed the same on the date stated opposite his name; and that he intends to support the petition.

Filed in the Office of the City Clerk and sworn to before me this 31 day of August, 2024

William J. Bernarde
Signature of City Clerk or designee

Christine Daniels
(Signature of Circulator)

511 Chicago Ave Wausau, WI 54403
(Address of Circulator)

PETITION

For Office Use

TO THE MAYOR AND COMMON COUNCIL
OF THE CITY OF WAUSAU, WISCONSIN

A Petition For:

Date Filed with City Clerk

- Alley Vacation Sanitary Sewer Storm Sewer Other as Follows:
 Blacktop Paving Street Light Watermain
 Curb and Gutter Street Vacation Zoning Change Construct Solar Array at Drinking Water

Treatment Plant

The undersigned petitioners respectfully request that your honorable body take such action as will cause the:

Please proceed with construction of the Solar Array at the drinking water treatment plant. This subsidized, income-producing asset will reduce water bills for City of Wausau customers, reduce our carbon footprint, and increase resilience of our water supply. Savings are projected at \$2.2 million over the cost of construction! Act now for best grant opportunities.

Signature of Electors	Print Name Clearly	Print Home Address	Date of Signing
1. <i>Ronald R Biele</i>	Ronald R Biele	202 Pine Crest Ave	8-19-24
2. <i>Roxann Demers</i>	Roxann Demers	1800 Green Vistas Dr	8-19-24
3. <i>[Signature]</i>	Diane Strock	5607 Westwood Meadows Pass	8-19-24
4.			
5.			
6.			
7.			
8.			
9.			
10.			
11.			
12.			
13.			
14.			
15.			

AFFIDAVIT OF CIRCULATOR

STATE OF WISCONSIN
CITY OF WAUSAU Christine Daniels being duly sworn disposes and says that he is a resident of the affected area, residing at 511 Chicago Ave Wausau, WI 54403 in the City of Wausau; that he is personally acquainted with the persons who have signed the foregoing petition; that he knows them to be residents of the affected area; that they signed the same with full knowledge of the contents thereof; that their respective residents are stated therein; that each signer signed the same on the date stated opposite his name; and that he intends to support the petition.

Filed in the Office of the City Clerk and sworn to before me this 31 day of August, 2024

[Signature]
Signature of City Clerk or designee

[Signature]
(Signature of Circulator)

511 Chicago Ave Wausau, WI 54403
(Address of Circulator)

PETITION

For Office Use

TO THE MAYOR AND COMMON COUNCIL
OF THE CITY OF WAUSAU, WISCONSIN

A Petition For:

Date Filed with City Clerk

- | | | | |
|--|--|--|---|
| <input type="checkbox"/> Alley Vacation | <input type="checkbox"/> Sanitary Sewer | <input type="checkbox"/> Storm Sewer | <input checked="" type="checkbox"/> Other as Follows: |
| <input type="checkbox"/> Blacktop Paving | <input type="checkbox"/> Street Light | <input type="checkbox"/> Watermain | <u>Construct Solar Array at Drinking Water</u> |
| <input type="checkbox"/> Curb and Gutter | <input type="checkbox"/> Street Vacation | <input type="checkbox"/> Zoning Change | |

Treatment Plant

The undersigned petitioners respectfully request that your honorable body take such action as will cause the:

Please proceed with construction of the Solar Array at the drinking water treatment plant. This subsidized, income-producing asset will reduce water bills for City of Wausau customers, reduce our carbon footprint, and increase resilience of our water supply. Savings are projected at \$2.2 million over the cost of construction! Act now for best grant opportunities.

Signature of Electors	Print Name Clearly	Print Home Address	Date of Signing
	Jeffrey Schletterer	155219 Dot Linn Rd	8-12-2024
	ERIK NIELSEN	722 JALSON ST	8/12/24
	Margaret Schoenfeld	913 Ethel St	8/12/24
	Mary Burgoyne	3307 Springdale Ave	8/12/24
	Rainald S. King	1106 Pine street	8/12/24
	AMANDA ROBINSON	1311 N 3rd St.	8-13-24
	ALEXA ZOLKIN	1311 N 3rd St	8-13-24
	Paul Bychinski	2103 Ridge View Dr.	08-13-24
	Krone S. Jostmann	3926 Riverview St	8-14-24
	JACQUELYN	1530 PEARSON ST	8-14-24
	Jennifer Cain	6604 Sarissa Dr	8/16/24
	Barry Liss	615 Parcker St.	8/16/24
	Mark Burwell	400 River Dr	8/16/24
	Jennifer Moran	207 Bluestone Dr	8-16-24
	Mary Brennan	2107 Lillie St.	8-19-24

AFFIDAVIT OF CIRCULATOR

STATE OF WISCONSIN
CITY OF WAUSAU Christine Daniels being duly sworn disposes and says that he is a resident of the affected area, residing at 511 Chicago Ave. Wausau, WI 54403 in the City of Wausau; that he is personally acquainted with the persons who have signed the foregoing petition; that he knows them to be residents of the affected area; that they signed the same with full knowledge of the contents thereof; that their respective residents are stated therein; that each signer signed the same on the date stated opposite his name; and that he intends to support the petition.

Filed in the Office of the City Clerk and sworn to before me this 31 day of August, 2024

Signature of City Clerk or designee

(Signature of Circulator)

511 Chicago Ave. Wausau, WI
(Address of Circulator) 54403

PETITION

For Office Use

TO THE MAYOR AND COMMON COUNCIL
OF THE CITY OF WAUSAU, WISCONSIN

A Petition For:

Date Filed with City Clerk

- | | | | |
|--|--|--|---|
| <input type="checkbox"/> Alley Vacation | <input type="checkbox"/> Sanitary Sewer | <input type="checkbox"/> Storm Sewer | <input checked="" type="checkbox"/> Other as Follows: |
| <input type="checkbox"/> Blacktop Paving | <input type="checkbox"/> Street Light | <input type="checkbox"/> Watermain | <u>Construct Solar Array at Drinking Water</u> |
| <input type="checkbox"/> Curb and Gutter | <input type="checkbox"/> Street Vacation | <input type="checkbox"/> Zoning Change | |

Treatment Plant

The undersigned petitioners respectfully request that your honorable body take such action as will cause the:

Please proceed with construction of the Solar Array at the drinking water treatment plant. This subsidized, income-producing asset will reduce water bills for City of Wausau customers, reduce our carbon footprint, and increase resilience of our water supply. Savings are projected at \$2.2 million over the cost of construction! Act now for best grant opportunities.

Signature of Electors	Print Name Clearly	Print Home Address	Date of Signing
1. <u>Christine E Daniels</u>	CHRISTINE DANIELS	511 CHICAGO AVE WAUSAU	8/8/24
2. <u>Rouleen Gartner</u>	Rouleen Gartner	1139 E. WAUSAU AVE. Wausau	8/9/24
3. <u>Antoinette M Schmitt</u>	Antoinette Schmitt	1012 Winton St Wausau	8/9/24
4. <u>A. Liss's Gravemade</u>	ADRIENNE LISS'S GRAVEMADE	615 Parcher St Wausau	8/9/24
5. <u>Travis G Severson</u>	TRAVIS G SEVERSON	1305 WASHINGTON ST Wausau	8/9/24
6. <u>Leanne R. Severson</u>	Leanne R. Severson	1305 Washington St. Wausau	8/9/24
7. <u>Mary M Wray</u>	Mary M Wray	627 Augusta ave	8/9/24
8. <u>Dora Gorski</u>	DORA GORSKI	623 N 4th Ave 54401	8/11/24
9. <u>Laure Place</u>	Laure Place	1505 W. Wausau Ave 54401	8/11/24
10. <u>Erin L. Tuyls</u>	Erin L. Tuyls	203 S 5th Ave, Wausau, WI 54401	8/11/24
11. <u>Beth Martin</u>	Beth Martin	144 Kent St. Wausau	8/11/24
12. <u>Gerard P Phelan</u>	Gerard Phelan	313 Ruder St Wausau	8/11/24
13. <u>Margaret J Jertz</u>	Margaret Jertz	1005 Steuben St Wausau	8/11/24
14. <u>Rebecca Bodenstein</u>	REBECCA BODENSTEIN	16 FURTON ST, WAUSAU	8/11/24
15. <u>Joyce Schneider</u>	Joyce Schneider	143129 Cty Rd. G, Wausau	8/11/24

AFFIDAVIT OF CIRCULATOR

STATE OF WISCONSIN

CITY OF WAUSAU Christine Daniels being duly sworn disposes and says that he is a resident of the affected area, residing at 511 Chicago Ave. Wausau, WI 54403 in the City of Wausau; that he is personally acquainted with the persons who have signed the foregoing petition; that he knows them to be residents of the affected area; that they signed the same with full knowledge of the contents thereof; that their respective residents are stated therein; that each signer signed the same on the date stated opposite his name; and that he intends to support the petition.

Filed in the Office of the City Clerk and sworn to before me this 31 day of August, 2024

[Signature]
Signature of City Clerk or designee

[Signature]
(Signature of Circulator)

511 Chicago Ave, Wausau
(Address of Circulator) WI 54403

PETITION

For Office Use

TO THE MAYOR AND COMMON COUNCIL
OF THE CITY OF WAUSAU, WISCONSIN

A Petition For:

Date Filed with City Clerk

- | | | | |
|--|--|--|---|
| <input type="checkbox"/> Alley Vacation | <input type="checkbox"/> Sanitary Sewer | <input type="checkbox"/> Storm Sewer | <input checked="" type="checkbox"/> Other as Follows: |
| <input type="checkbox"/> Blacktop Paving | <input type="checkbox"/> Street Light | <input type="checkbox"/> Watermain | |
| <input type="checkbox"/> Curb and Gutter | <input type="checkbox"/> Street Vacation | <input type="checkbox"/> Zoning Change | <u>Construct Solar Array at Drinking Water</u> |

Treatment Plant

The undersigned petitioners respectfully request that your honorable body take such action as will cause the:

Please proceed with construction of the Solar Array at the drinking water treatment plant. This subsidized, income-producing asset will reduce water bills for City of Wausau customers, reduce our carbon footprint, and increase resilience of our water supply. Savings are projected at \$2.2 million over the cost of construction! Act now for best grant opportunities.

Signature of Electors	Print Name Clearly	Print Home Address	Date of Signing
	Benjamin Abreu	1233 JACKSON ST	8/8/24
	Teddy Abrey	1130 Grand Ave Apt 8	8/9/24
	Patricia Ruhnke	1130 Grand Ave Apt 8	8/9/24
	HONORIE COTE	815 STARK ST	8/10/24
	MARK JONES	1020 AUGUSTIA AVE	8/10/24
	Beth Bye	813 Graves Ave	8-10-24
	Kathi Zorn	915 N 2nd Ave	8-10-24
	Frank Stella	1705 N. 2nd St.	8-10-24
	Mark Kamenberg	5105 N 39th Ave	8-10-24
	RUSSELL J. TONELLI	603 BROKEN ARROW Rd.	8/13/24
	Jane E. Tonelli	603 Broken Arrow Rd	8/13/24
	Kathy Mero	4010 Hillside Ln. Wausau 03	8/13/24
	Lois P. Murphy	815 N. 6th Ave	8/12/24
	Steve Krause	1813 12th St Wausau 54403	08.13.2024
	Sandra R. Krause	3303 Polzer Dr.	8/15/2024

AFFIDAVIT OF CIRCULATOR

STATE OF WISCONSIN

CITY OF WAUSAU Jean Abreu

being duly sworn disposes and says that he is a resident of the affected area, residing at 1233 JACKSON ST in the City of Wausau; that he is personally acquainted with the persons who have signed the foregoing petition; that he knows them to be residents of the affected area; that they signed the same with full knowledge of the contents thereof; that their respective residents are stated therein; that each signer signed the same on the date stated opposite his name; and that he intends to support the petition.

Filed in the Office of the City Clerk and sworn to before me this 31 day of August, 2024

Signature of City Clerk or designee

(Signature of Circulator)
1233 Jackson St., Wausau
(Address of Circulator)

PETITION

For Office Use

TO THE MAYOR AND COMMON COUNCIL
OF THE CITY OF WAUSAU, WISCONSIN

A Petition For:

Date Filed with City Clerk

- | | | | |
|--|--|--|---|
| <input type="checkbox"/> Alley Vacation | <input type="checkbox"/> Sanitary Sewer | <input type="checkbox"/> Storm Sewer | <input checked="" type="checkbox"/> Other as Follows: |
| <input type="checkbox"/> Blacktop Paving | <input type="checkbox"/> Street Light | <input type="checkbox"/> Watermain | |
| <input type="checkbox"/> Curb and Gutter | <input type="checkbox"/> Street Vacation | <input type="checkbox"/> Zoning Change | <u>Construct Solar Array at Drinking Water</u> |

Treatment Plant

The undersigned petitioners respectfully request that your honorable body take such action as will cause the:

Please proceed with construction of the Solar Array at the drinking water treatment plant. This subsidized, income-producing asset will reduce water bills for City of Wausau customers, reduce our carbon footprint, and increase resilience of our water supply. Savings are projected at \$2.2 million over the cost of construction! Act now for best grant opportunities.

Signature of Electors	Print Name Clearly	Print Home Address	Date of Signing
	Ryan Samuelson	1000 5th 25th St	8/9/24
	Timothy D. Holton	314 S 9th Ave	8/15/24
	William P. Meyers	924 Pinewood Ln	8/15/24
	Stanford Schacht	1311 Rose Marie St	8/15/24
	THOMAS F. SPITNER	620 RUDER ST	8/15/24
	Will Altmanninger	709 Fulton St	8/15/24
	J. Moellenkort	1009 Stark St	8-15-24
	LEON KOCH	3707 Maple Ridge Rd	8-15-2024
	Wesley Ebert	1201 N. 12th St	8-15-24
	THOMAS S. JIRY JR.	211 Sturgeon Eddy Rd	8-15-24
	RICHARD ROSE	1018 GOLF CLUB RD	8-15-24
	Sarah Schneck	608 Lake View Dr	8-16-24
	Angela Zarabie	810 N. 29th Ave	8/16/24
	Ann Kleiber	4617 Huntington Ct.	8/16/24
	Ramona Wintler-Leigh	2208 Midway Blvd.	8/16/24

AFFIDAVIT OF CIRCULATOR

STATE OF WISCONSIN

CITY OF WAUSAU Jean Abreu

being duly sworn disposes and says that he is a resident of the affected area, residing at 1233 Jackson St. in the City of Wausau; that he is personally acquainted with the persons who have signed the foregoing petition; that he knows them to be residents of the affected area; that they signed the same with full knowledge of the contents thereof; that their respective residents are stated therein; that each signer signed the same on the date stated opposite his name; and that he intends to support the petition.

Filed in the Office of the City Clerk and sworn to before me this 31 day of August, 2024

Signature of City Clerk or designee

(Signature of Circulator)

1233 Jackson St, Wausau
(Address of Circulator)

PETITION

For Office Use

TO THE MAYOR AND COMMON COUNCIL
OF THE CITY OF WAUSAU, WISCONSIN

A Petition For:

Date Filed with City Clerk

- | | | | |
|--|--|--|---|
| <input type="checkbox"/> Alley Vacation | <input type="checkbox"/> Sanitary Sewer | <input type="checkbox"/> Storm Sewer | <input checked="" type="checkbox"/> Other as Follows: |
| <input type="checkbox"/> Blacktop Paving | <input type="checkbox"/> Street Light | <input type="checkbox"/> Watermain | |
| <input type="checkbox"/> Curb and Gutter | <input type="checkbox"/> Street Vacation | <input type="checkbox"/> Zoning Change | <u>Construct Solar Array at Drinking Water</u> |

Treatment Plant

The undersigned petitioners respectfully request that your honorable body take such action as will cause the:

Please proceed with construction of the Solar Array at the drinking water treatment plant. This subsidized, income-producing asset will reduce water bills for City of Wausau customers, reduce our carbon footprint, and increase resilience of our water supply. Savings are projected at \$2.2 million over the cost of construction! Act now for best grant opportunities.

Signature of Electors	Print Name Clearly	Print Home Address	Date of Signing
	Jerome Hartwig	1107 N. 10th St	8/14/24
	Bruce Chopp	1209 N 16th St	8/14/24
	Ann Chopp	1209 N. 16th St.	8/14/24
	Emily Xiong	922 S 5th Ave	8/14/24
	Kerry Wilson	1515 Adams Ct	8/14/24
	ANN LEUMER	3424 Hidden Links	8-14-24
	John Robinson	1226 Highland Court	8/14/24
	Tony Maa	708 N 3rd Ave	8/14/24
	Roderic Johnson	3526 Fenwick Dr	8/14/24
	Mary Robinson	1226 Highland Ct	8/14/24
	DAVID R. LEE	1402 STARK	8/14/24
	Darlene A. Lee	1402 Stark St.	8.14.24
	CHARLES GARVEY	3832 RIVERVIEW DR.	8-14-24
	Kathy Garvey	3832 Riverview Dr	8-14-24
	Courtney Olson	1206 Highland Park	8-14-24

AFFIDAVIT OF CIRCULATOR

STATE OF WISCONSIN

CITY OF WAUSAU Sylvia Wright being duly sworn disposes and says that he is a resident of the affected area, residing at 2016 Ewing St, 54403 in the City of Wausau; that he is personally acquainted with the persons who have signed the foregoing petition; that he knows them to be residents of the affected area; that they signed the same with full knowledge of the contents thereof; that their respective residents are stated therein; that each signer signed the same on the date stated opposite his name; and that he intends to support the petition.

Filed in the Office of the City Clerk and sworn to before me this 31 day of August, 2024

Signature of City Clerk or designee

(Signature of Circulator)
2016 Ewing St, 54403
(Address of Circulator)

PETITION

For Office Use

TO THE MAYOR AND COMMON COUNCIL
OF THE CITY OF WAUSAU, WISCONSIN

A Petition For:

Date Filed with City Clerk

- | | | | |
|--|--|--|---|
| <input type="checkbox"/> Alley Vacation | <input type="checkbox"/> Sanitary Sewer | <input type="checkbox"/> Storm Sewer | <input checked="" type="checkbox"/> Other as Follows: |
| <input type="checkbox"/> Blacktop Paving | <input type="checkbox"/> Street Light | <input type="checkbox"/> Watermain | <u>Construct Solar Array at Drinking Water</u> |
| <input type="checkbox"/> Curb and Gutter | <input type="checkbox"/> Street Vacation | <input type="checkbox"/> Zoning Change | |

Treatment Plant

The undersigned petitioners respectfully request that your honorable body take such action as will cause the:

Please proceed with construction of the Solar Array at the drinking water treatment plant. This subsidized, income-producing asset will reduce water bills for City of Wausau customers, reduce our carbon footprint, and increase resilience of our water supply. Savings are projected at \$2.2 million over the cost of construction! Act now for best grant opportunities.

Signature of Electors	Print Name Clearly	Print Home Address	Date of Signing
	Jon. R Howell	5507 Russell Dr Wausau	8/12/24
	Carl J Johnson	1744 Cherry St Wausau	8-12-24
	MARY Sue Edens Kuss	4 N Hill Rd Wausau	8-12-24
	TAMI NAKHLA	1501 Gemini Pl.	8-12-24
	Samuel Criggs	812 McClure St.	8-12-24
	GREG LAMANSKY	918 FULTON ST	8/12/24
	Carol Lamensky	918 Fulton	8/12/24
	Cathy Veldhuizen	1209 McIndoe St	8-12-24
	PAULA HAWKINS	1502 Franklin St Wausau	8-12-24
	Julie Burgess	824 Adams St Wausau	8-12-24
	Dale Bergess	824 Adams St Wausau	8-12-24
	Alice S. Britton	1508 Merrill Ave #314 Wausau	8-13/24
	Ramert Carlson	1508 Merrill Ave #409 Wausau	8-13-24
	MILLY MEURET	2314 Elmwood Blvd	8.13.24
	JOSEFA HAWKINS	725 Kent St Wausau	8/13/24

AFFIDAVIT OF CIRCULATOR

STATE OF WISCONSIN

CITY OF WAUSAU Victorie K. Richmond Hawkins being duly sworn disposes and says that he is a resident of the affected area, residing at 1725 Cherry St, Wausau WI 54401 in the City of Wausau; that he is personally acquainted with the persons who have signed the foregoing petition; that he knows them to be residents of the affected area; that they signed the same with full knowledge of the contents thereof; that their respective residents are stated therein; that each signer signed the same on the date stated opposite his name; and that he intends to support the petition.

Filed in the Office of the City Clerk and sworn to before me this 31 day of August, 2024

Signature of City Clerk or designee

(Signature of Circulator)

1725 Cherry St, Wausau, WI 54401
(Address of Circulator)

PETITION

For Office Use

TO THE MAYOR AND COMMON COUNCIL
OF THE CITY OF WAUSAU, WISCONSIN

A Petition For:

Date Filed with City Clerk

- Alley Vacation Sanitary Sewer Storm Sewer Other as Follows:
 Blacktop Paving Street Light Watermain
 Curb and Gutter Street Vacation Zoning Change Construct Solar Array at Drinking Water

Treatment Plant

The undersigned petitioners respectfully request that your honorable body take such action as will cause the:

Please proceed with construction of the Solar Array at the drinking water treatment plant. This subsidized, income-producing asset will reduce water bills for City of Wausau customers, reduce our carbon footprint, and increase resilience of our water supply. Savings are projected at \$2.2 million over the cost of construction! Act now for best grant opportunities.

Signature of Electors	Print Name Clearly	Print Home Address	Date of Signing
	James D. Kraft	2205 Emerson St.	13 Aug 24
	Katie Rosenberg	1706 Emerson St.	13 Aug 2024
	David J. Lee	1706 Emerson St.	13 Aug 2024
	SETH CARLSON	411 S. 7th AVE	13 Aug 24
	Alexandra St. Bernard	1707 Roosevelt St.	13 AUG 24
	Levi Nicholson	1616 Geisler St.	13 Aug 24
	Cole Holliday	1616 Geisler St.	13 Aug 24
	Adrianna Schmitt	1702 Roosevelt St.	13 Aug 24
	Michele Jones	1404 T. L. Dr. 35 St	13 Aug 24
	Tonnai Kayer	1221 S. 50th Ave	13 Aug 24
	Marne Boehm	803 S 48th Ave	13 Aug 24
	Nicholas Schmitt	1221 S. 50th Ave. Apt 3	13 Aug 24
	Mia Willett	317 N 1st St Apt 106	Aug 13 24
	Dan Line	1506 Emerson St Wausau	Aug 13 2024
	Thomas D Kalli's	734 Jefferson St. Apt 8	13 Aug 2024

AFFIDAVIT OF CIRCULATOR

STATE OF WISCONSIN
CITY OF WAUSAU

Mary Kluz being duly sworn disposes and says that he is a resident of the affected area, residing at 127 Kent St in the City of Wausau; that he is personally acquainted with the persons who have signed the foregoing petition; that he knows them to be residents of the affected area; that they signed the same with full knowledge of the contents thereof; that their respective residents are stated therein; that each signer signed the same on the date stated opposite his name; and that he intends to support the petition.

Filed in the Office of the City Clerk and sworn to before me this 31 day of August, 2024

Signature of City Clerk or designee

○

(Signature of Circulator)

127 Kent St Wausau 54403
(Address of Circulator)

PETITION

For Office Use

TO THE MAYOR AND COMMON COUNCIL
OF THE CITY OF WAUSAU, WISCONSIN

A Petition For:

Date Filed with City Clerk

- | | | | |
|--|--|--|---|
| <input type="checkbox"/> Alley Vacation | <input type="checkbox"/> Sanitary Sewer | <input type="checkbox"/> Storm Sewer | <input checked="" type="checkbox"/> Other as Follows: |
| <input type="checkbox"/> Blacktop Paving | <input type="checkbox"/> Street Light | <input type="checkbox"/> Watermain | |
| <input type="checkbox"/> Curb and Gutter | <input type="checkbox"/> Street Vacation | <input type="checkbox"/> Zoning Change | <u>Construct Solar Array at Drinking Water</u> |

Treatment Plant

The undersigned petitioners respectfully request that your honorable body take such action as will cause the:

Please proceed with construction of the Solar Array at the drinking water treatment plant. This subsidized, income-producing asset will reduce water bills for City of Wausau customers, reduce our carbon footprint, and increase resilience of our water supply. Savings are projected at \$2.2 million over the cost of construction! Act now for best grant opportunities.

Signature of Electors	Print Name Clearly	Print Home Address	Date of Signing
	Mandy Roberts	2016 Ewing St	8/8/24
	MARK Esterline	2016 Ewing St	8/8/24
	Sylvia Wright	2016 Ewing St	8/8/24
	Sarah Lynch	1014 Graves Ave	08/08/2024
	Rachel Radtke	411 S 7th Ave	08/08/24
	JARED HAYES	921 FRANKLIN ST	8/8/24
	Dare Wudel	1718 N 13th Street	8/8/24
	Michelle Hendrickson	2302 Pied Piper Lane	8/8/24
	JOHN W. BROWN	1212 GRAND AVE WAUSAU WI 54403	8/8/24
	JEFFREY HINUBER	2006 LAMONT ST WAUSAU WI 54403	8/8/24
	Kris Tiles	824 Graves Ave Wausau, WI 54403	8/8/24
	Kathleen Schneck	4023 TROY ST WAUSAU 54403	8/9/24
	GARY SCHNECK	4023 TROY ST WAUSAU 54403	8/9/24
	LISA WOLTERS	131 Kent St.	8/10/24
	Victoria K. Richmond-Hawkins	1725 Cherry St, Wausau WI 54401	8/11/2024

AFFIDAVIT OF CIRCULATOR

STATE OF WISCONSIN
CITY OF WAUSAU Mary Kluz being duly sworn disposes and says that he is a resident of the affected area, residing at 127 Kent St in the City of Wausau; that he is personally acquainted with the persons who have signed the foregoing petition; that he knows them to be residents of the affected area; that they signed the same with full knowledge of the contents thereof; that their respective residents are stated therein; that each signer signed the same on the date stated opposite his name; and that he intends to support the petition.

Filed in the Office of the City Clerk and sworn to before me this 31 day of August, 2024

Signature of City Clerk or designee

(Signature of Circulator)
127 Kent St, Wausau 54403
(Address of Circulator)

WATER UTILITY FUND

07/31/2025

	City FY25			
	Amended		% Of	
	Budget Detail	CY Actuals YTD	Budget	PY Actuals YTD
Revenues				
Intergovernmental Revenue and Grants	1,000,000		0.00%	1,527,878
Public Charges for Services	12,899,565	6,446,475	49.97%	4,691,779
Miscellaneous Revenue	78,000	71,502	91.67%	463,669
Proceeds from Long Term Debt	2,550,000	679,453	26.65%	359,621
Capital Contributions	1,210,000	500	0.04%	-
Revenues	16,737,565	7,197,930	43.00%	7,042,947
Expenses				
Salaries and Wages	1,392,495	738,034	53.00%	545,976
Benefits	522,597	271,618	51.97%	176,587
210 Professional Services	255,800	168,671	65.94%	461,720
220 Utility Services	660,850	289,566	43.82%	181,027
230 Repair and Maintenance Services-Infrastructure	250,000	54,481	21.79%	3,500
240 Repair and Maintenance Services-Other	403,000	55,620	13.80%	22,220
250 Special Services	337,500	133,919	39.68%	68,963
290 Other Contractual Services	42,000	62,796	149.51%	1,964
310 Office Supplies	80,700	24,519	30.38%	13,167
320 Publications, Subscriptions and Dues	56,400	11,822	20.96%	295
330 Travel	49,600	7,713	15.55%	15,584
340 Operating Supplies	111,700	25,887	23.18%	18,787
350 Repair and Maintenance Supplies	103,500	22,018	21.27%	14,796
360 Other Repairs and Maintenance Supplies	458,200	70,755	15.44%	23,865
390 Other Supplies and Expense	401,000	104,646	26.10%	35,288
410 Concrete and Clay Products	92,500	19	0.02%	12
420 Metal Products	50		0.00%	146
430 Wood Products	500		0.00%	45
440 Plastic Products	1,000		0.00%	1,530
450 Raw Materials - Chemicals	2,185,000	505,008	23.11%	293,729
480 Fabricated Materials	12,000	-	0.00%	-
510 Insurance	58,000	66,753	115.09%	44,716
520 Other Permits and Regulatory Fees	5,600	2,460	43.93%	2,220
530 Rents and Leases	17,500	371	2.12%	14,163
590: Other Fixed Charges	173,000	-	0.00%	-
610 Principal Redemption	3,059,044	3,151,528	103.02%	2,664,241
620 Interest	986,083	533,634	54.12%	448,874
690 Other Debt Service	-	-		800
590 Payment In Lieu of Tax	1,590,000	-	0.00%	-
60000:Capital Outlay	4,130,000	1,481,076	35.86%	4,984,032
Expenses	17,435,619	7,782,914	44.6%	10,038,247
Revenues Over/(Under) Expenses	(698,054)	(584,984)		(2,995,300)
Capital Projects				
Sidewalk Repairs		39,947		
Neptune Meter Reading Collector		12,500		
Water Treatment Plant Construction		18,896		
Water Meters and Meter Reading	800,000	571,549	71.44%	
Cherry Street Water Mains	1,710,000	561,867	32.86%	
Fulton and 2nd Street - Mains	840,000		0.00%	
Downtown - Mains	50,000		0.00%	
SCADA Equipment	360,000		0.00%	
Reservoir Interior and Exterior Coatings	310,000		0.00%	
Elm Booter Station	60,000		0.00%	
GAC Treatment System		276,317		
	4,130,000	1,481,076		

SEWER UTILITY FUND

07/31/2025

	City FY25 Amended Budget Detail	CY Actuals YTD	% Of Budget	PY Actuals YTD
Revenues				
Intergovernmental Revenue and Grants	-	73,603		-
Public Charges for Services	11,460,173	6,219,616	54.27%	4,376,732
Miscellaneous Revenue	146,789	168,472	114.77%	80,271
Capital Contributions	5,195,223	40,700	0.78%	673,737
Proceeds From Long Term Debt	4,505,167	228,173	5.06%	45,519
Revenues	<u>21,307,352</u>	<u>6,730,564</u>	<u>31.59%</u>	<u>5,176,259</u>
Expenses				
Salaries and Wages	1,165,664	750,069	64.35%	510,483
Benefits	512,178	301,494	58.87%	214,714
210 Professional Services	221,800	38,447	17.33%	22,079
220 Utility Services	1,201,120	365,842	30.46%	252,149
240 Repair and Maintenance Services-Other	303,260	101,729	33.55%	66,696
250 Special Services	162,211	145,015	89.40%	78,997
290 Other Contractual Services	23,300	10,472	44.94%	7,550
310 Office Supplies	31,250	15,586	49.88%	11,574
320 Publications, Subscriptions and Dues	21,800	17,237	79.07%	6,477
330 Travel	44,606	11,018	24.70%	12,742
340 Operating Supplies	31,800	19,434	61.11%	14,666
350 Repair and Maintenance Supplies	70,100	30,216	43.10%	19,424
360 Other Repairs and Maintenance Supplies	267,100	130,583	48.89%	81,613
390 Other Supplies and Expense	126,500	80,044	63.28%	30,061
410 Concrete and Clay Products	1,500	1,562	104.13%	283
420 Metal Products	20,000	18,356	91.78%	9,630
440 Plastic Materials	1,000	406	40.60%	-
450 Raw Materials - Chemicals	646,500	317,740	49.15%	159,937
480 Fabricated Materials	5,000	2,704	54.08%	-
510 Insurance	99,765	145,383	145.73%	64,687
520 Other Permits and Regulatory Fees	42,000	25,998	61.90%	32,088
530 Rents and Leases	8,000	-	0.00%	45
610 Principal Redemption	3,381,005	3,381,383	100.01%	3,305,216
620 Interest	1,711,284	878,589	51.34%	915,528
690 Other Debt Service	-	-		800
740 Losses	-	-		-
60000:Capital Outlay	10,645,390	682,535	6.41%	1,480,032
50920:Transfers to Other Funds	485,000	-	0.00%	-
Expenses	<u>21,229,133</u>	<u>7,471,842</u>	<u>35.20%</u>	<u>7,297,471</u>
Revenues Over/(Under) Expenses	78,219	(741,278)		(2,121,212)

Capital Outlay - By Projects				
Screening Project	5,383,890	242,290	4.50%	
Cellular Amplification Project	300,000		0.00%	
Dump Truck	120,000		0.00%	
Downtown - Mains	300,000		0.00%	
Fulton and 2nd Street - Mains	590,000		0.00%	
Cherry Street - Sewer Mains	1,440,000	402,938	27.98%	
Cherry Street Lift Station	1,100,000	26,364	2.40%	
Washington St Siphon	886,500		0.00%	
Sewer Slipline	525,000		0.00%	
Garage Door		10,943		
	<u>10,645,390</u>	<u>682,535</u>		

Department of Public Works & Utilities



Eric Lindman, P.E.
Director of Public Works and Utilities

TO: Wausau Waterworks Commission

FROM: Eric Lindman, P.E.
Director of Public Works & Utilities

DATE: September 2, 2025

SUBJECT: Wage and Classification Proposed Changes

Wages were reviewed and the proposed classifications and changes are included below. The budget impacts were reviewed by the City's financial advisors, Ehler's, and their findings are included as well. These changes have made no change to the proposed schedule for rates or review of rates. The review not only included the pay changes proposed but also the increase in employees starting January 1, 2026. It is not the intent of the utility to immediately fill these positions as there are current vacancies that need to be filled first and training that will need to be required. As the utility on-boards new employees, staff will evaluate the proper time to fill these new positions.

Staff would prefer to hold off on the approval of the new positions and bring these back at a later date once we become fully staffed and review our current ability to onboard and train additional new employees.

Staff is asking for the Commission to approve the proposed wage changes as shown below.

Drinking Water									
	Number of Employees	Current Pay Grade and Salary			Proposed Pay Grade And Salary			2026 Budget Increase	
		Pay Grade	Salary	Wage	Pay Grade	Salary	Wage	Salary	Wage
Water Operations Superintendent	1	12 (S15)	96,990.00	46.63	9	112,985.00	54.32	15,995.00	7.69
Water Distribution Supervisor	1	16 (S11)	75,275.00	36.19	12	91,374.40	43.93	16,099.40	7.74
Water Plant Operation Supervisor	1	16	72,009.00	34.62	12	88,712.00	42.65	16,703.00	8.03
Water Plant Operation Technician (Senior)	1	17	66,123.00	31.79	15	76,086.00	36.58	9,963.00	4.79
Water Plant Operator	1	18 (S12)	64,896.00	31.20	15	79,560.00	38.25	14,664.00	7.05
¹ Water Plant Operation Technician	4	18 (S10)	61,152.00	29.40	17	66,123.00	31.79	19,884.00	2.39
Senior Water Distribution Maintainer	1	18 (S11)	61,172.80	29.41	16	72,051.20	34.64	10,878.40	5.23
¹ Water Distribution Maintainer	9	19	57,241.00	27.52	18	61,152.00	29.40	35,199.00	1.88
² Administrative Assistant III Water	1	19 (S10)	58,988.00	28.36	18	62,982.40	30.28	3,994.40	1.92
								Sub-Total =	143,380.20
¹ Water Plant Operation Technician	1				17	66,123.00		66,123.00	
								Sub-Total =	66,123.00
	21							Total =	209,503.20

Wastewater									
		Current Pay Grade and Salary			Proposed Pay Grade And Salary			2026 Budget Increase	
		Pay Grade	Salary	Wage	Pay Grade	Salary	Wage	Salary	Wage
Wastewater Superintendent	1	12 (S21)	105,081.00	50.52	9	122,324.00	58.81	17,243.00	8.29
Wastewater Plant Operations Supervisor	1	16 (S14)	78,728.00	37.85	12	95,535.40	45.93	18,824.29	8.08
Collection System Supervisor	1	16 (S10)	74,193.00	35.67	12	90,022.40	43.28	17,728.93	7.61
¹ Wastewater Plant Operations Technician	6	18	61,152.00	29.40	17	66,123.00	31.79	5,567.52	2.39
Wastewater Lab Technician	1	18 (S9)	62,067.00	29.84	15	76,086.00	36.58	15,701.28	6.74
¹ Collection System Technician	5	19	57,241.00	27.52	18	61,152.00	29.40	19,555.00	1.88
Sr. Collection System Technician	1	18	61,152.00	29.40	16	72,009.00	34.62	10,857.00	5.22
² Administrative Assistant II Water	1	20 (S11)	55,785.00	26.82	19	59,862.40	28.78	4,077.40	1.96
								Sub-Total =	109,554.42
Sr. Wastewater Plant Operation Technician	1				15	76,086.00	36.58	76,086.00	
³ Collection System Technician	1				18	61,152.00	29.40	61,152.00	
								Sub-Total =	137,238.00
	19							Total =	246,792.42

¹Wages used mid-point for approximate annual budget impact

²Reclass proposed based on escalation of duties required

³New positions added in 2026 or 2027 based on 2022 staffing assessment by Baker Tilly



City of Wausau, WI

2025 Utilities Long-Range Cash Flow Analysis

September 2, 2025 Utilities Commission Meeting

Why are we here?

- Analyze the impact of planned capital projects on the water & sewer utilities
- Ehlers to identify fiscal sustainability
- Our Process
 - ✓ Historical Rate and Financial Performance; PSC Education
 - ✓ Future Projections
 - O&M, Depreciation, and PILOT
 - Funding Project(s): Debt vs. Cash
 - ✓ Rate Impact

PSC Windows of Opportunity to Adjust Rates

Simplified Rate Case ("SRC")

- Once a year and only if eligible
- Eligibility based on time and finances
 - Can only complete SRCs within 5 years of last conventional rate case.
 - Finances: if PSC report indicates that year's SRC rate would not take utility over benchmark ROR

Conventional Rate Case ("CRC")

- Eligible whenever
- PSC will generally want their math

Water Rates Historical Implementation

- Last Conventional Rate Case (CRC) completed July 1, 2023 to recover:
 - ✓ O&M and Taxes: 6,234,841
 - ✓ Deprecation: 2,084,442
 - ✓ ROR: 4,091,492
- Simplified Rate Case (SRC) window of opportunity: until July 1, 2028
 - ✓ Only if eligible
 - ✓ PSC 2024 AR indicated the utility is currently ineligible

PSC Math Review

How much revenue should we generate from user rates?



Cash Basis

- + Op. and Maint. Expenses
- + Taxes/Transfer Payments
- + Debt Service (P&I)
- + Capital funded from rates
- Less Non-rate Revenue
- = Total Revenue Requirements

Utility Basis - PSC

- + Op. and Maint. Expenses
- + Taxes/Transfer Payments
- + Depreciation
- + Rate of Return on Rate Base
- Less Non-Rate Revenue
- = Total Revenue Requirements

Water: Historical Rate Performance

Revenue Requirement		Shown with no increase				Est	Budget
Component	Description	2020	2021	2022	2023	2024	2025
Cash Basis							
1	O&M and PILOT	\$4,086,571	\$4,974,202	\$4,879,582	\$6,200,596	\$5,819,667	\$7,276,878
2	Debt	\$1,725,755	\$1,038,672	\$1,318,399	\$3,788,991	\$3,982,141	\$4,314,817
3	Cash Funded Capital	\$690,302	\$1,576,191	\$2,882,147	\$1,515,596	\$1,279,487	\$1,822,143
Less:							
	Other Revenue	\$153,793	\$250,443	\$50,328	\$213,676	\$6,000	\$128,000
	Interest Income	\$6,736	\$657	\$36,416	\$547,924	\$478,355	\$478,355
	Revenue Requirement (Costs less Other Income)	\$6,342,099	\$7,337,965	\$8,993,384	\$10,743,583	\$10,596,940	\$12,807,483
	User Rates Revenue	\$6,389,966	\$7,366,396	\$7,499,589	\$9,989,866	\$12,028,496	\$12,899,565
	Rate Adequacy	\$47,867	\$28,431	(\$1,493,795)	(\$753,717)	\$1,431,556	\$92,082
	Rate Adjustment Needed	0.00%	0.00%	19.92%	7.54%	0.00%	0.00%
Utility Basis (PSC)							
1	O&M and PILOT	\$4,086,571	\$4,974,202	\$4,879,582	\$6,200,596	\$5,819,667	\$7,276,878
2	Depreciation	\$903,580	\$928,633	\$1,117,058	\$1,194,863	\$1,077,592	\$1,636,444
	NIRB	\$27,152,145	\$27,161,431	\$48,371,631	\$70,429,113	\$78,687,062	\$92,216,346
	PSC Benchmark ROI %	4.90%	4.90%	4.90%	6.50%	6.50%	6.70%
3	PSC Calculated ROI	\$1,330,455	\$1,330,910	\$2,370,210	\$4,577,892	\$5,114,659	\$6,178,495
Less:							
	Other Revenue	\$153,793	\$250,443	\$50,328	\$213,676	\$6,000	\$128,000
	Revenue Requirement (Costs less Other Income)	\$6,166,813	\$6,983,302	\$8,316,522	\$11,759,675	\$12,005,918	\$14,963,817
	User Rates Revenue	\$6,389,966	\$7,366,396	\$7,499,589	\$9,989,866	\$12,028,496	\$12,899,565
	Rate Adequacy	\$223,153	\$383,094	(\$816,933)	(\$1,769,809)	\$22,578	(\$2,064,252)
	Rate Adjustment Needed	0.00%	0.00%	10.89%	17.72%	0.00%	16.00%

Rates performing on a cash basis

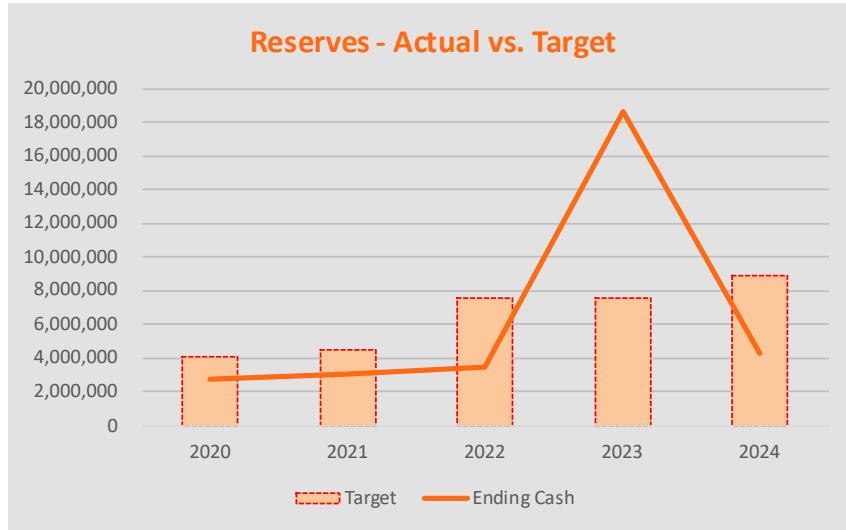
and not on utility basis (PSC uses)

Let's investigate the history further...

Notes:

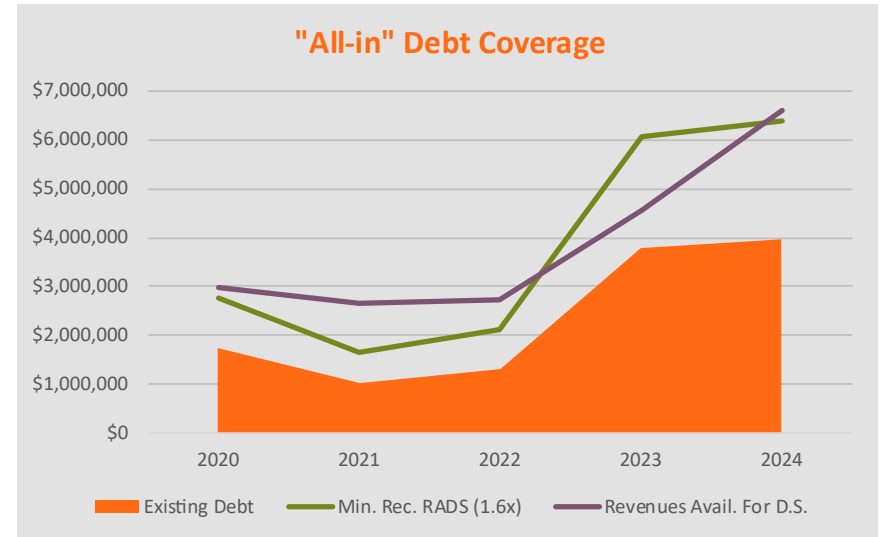
^AIncludes recommended debt coverage at 1.4x annual debt payment

Water: Historical Financial Indicators



- Reserves to fund deficits and capital (6 mo. Target)

- Break even Debt Coverage



Water Rate Option 1 – Do Nothing

- Do nothing approach would eliminate any rate adjustments, but it would also increase amount needed to adjust rates to meet PSC Benchmark in the future compounding approx. 4.7% annually 2025-2030. The longer you wait the more impactful the PSC would cause the magnitude of a one-time adjustment.
- (Depicted on next slide) The Utility drain reserves by 2030

	2025	2026	2027	2028	2029	2030
Rate of Return						
Average Utility Plant in Service	105,795,675	113,934,983	119,456,483	124,598,983	128,026,483	130,263,983
Plus: Materials and Supplies	382,187	382,187	382,187	382,187	382,187	382,187
Less: Avg. Utility Plant Accum. Depreciation	13,961,516	15,082,731	15,776,223	16,764,760	18,351,739	20,348,738
Less: Regulatory Liability	0	0	0	0	0	0
Average Net Investment Rate Base (NIRB)	92,216,346	99,234,439	104,062,448	108,216,410	110,056,931	110,297,432
Net Operating Income	4,114,243	3,609,626	3,230,932	2,854,912	2,526,750	2,254,079
ROR	4.46%	3.64%	3.10%	2.64%	2.30%	2.04%
PSC Projected Benchmark	6.50%	6.50%	6.50%	6.50%	6.50%	6.50%
Rate Adj. to Benchmark	14.57%	22.02%	27.39%	32.40%	35.87%	38.10%

Water: Future Projection – Do Nothing

	2025	2026	2027	2028	2029	2030
Revenues						
Total Revenues from User Rates ¹	\$12,899,565	\$12,899,565	\$12,899,565	\$12,899,565	\$12,899,565	\$12,899,565
Percent Increase to User Rates	0.00%	0.00%	0.00%	0.00%	0.00%	0.00%
Cumulative Percent Rate Increase	0.00%	0.00%	0.00%	0.00%	0.00%	0.00%
Dollar Amount Increase to Revenues	\$0	\$0	\$0	\$0	\$0	\$0
Total Other Revenues	\$606,355	\$134,262	\$145,432	\$149,827	\$148,851	\$143,230
Total Revenues	\$13,505,920	\$13,033,827	\$13,044,997	\$13,049,392	\$13,048,416	\$13,042,795
Less: Expenses						
Operating and Maintenance ²	\$5,686,878	\$5,857,484	\$6,033,208	\$6,214,205	\$6,400,631	\$6,592,650
PILOT Payment	\$1,590,000	\$1,590,000	\$1,590,000	\$1,590,000	\$1,590,000	\$1,590,000
Net Before Debt Service and Capital Expenditures	\$6,229,042	\$5,586,344	\$5,421,789	\$5,245,187	\$5,057,785	\$4,860,145
Debt Service						
Existing Debt P&I	\$4,314,817	\$4,307,461	\$3,971,197	\$3,962,499	\$3,969,742	\$3,962,401
New (2025-2034) Debt Service P&I	\$0	\$0	\$332,775	\$336,638	\$328,663	\$300,788
Total Debt Service	\$4,314,817	\$4,307,461	\$4,303,972	\$4,299,136	\$4,298,404	\$4,263,189
Transfer In (Out)	-\$140,000	-\$140,000	\$0	\$0	\$0	\$0
Less: Capital Improvements	\$10,815,616	\$5,463,000	\$5,580,000	\$4,705,000	\$2,150,000	\$2,325,000
Debt Proceeds	\$6,719,400	\$5,303,000	\$5,080,000	\$3,300,000	\$0	\$0
Net Annual Cash Flow	(\$2,321,991)	\$978,882	\$617,817	(\$458,949)	(\$1,390,619)	(\$1,728,043)
Restricted and Unrestricted Cash Balance:						
Balance at first of year	\$4,314,980	\$1,992,989	\$2,971,872	\$3,589,689	\$3,130,740	\$1,740,121
Net Annual Cash Flow Addition/(subtraction)	-\$2,321,991	\$978,882	\$617,817	-\$458,949	-\$1,390,619	-\$1,728,043
Balance at end of year	\$1,992,989	\$2,971,872	\$3,589,689	\$3,130,740	\$1,740,121	\$12,077
"All-in" Debt Coverage	1.41	1.26	1.26	1.22	1.18	1.14
PSC Days Cash on Hand	(139)	(86)	(54)	(78)	(147)	(231)

Water: Future Projection – SRC & CRC

	2025	2026	2027	2028	2029	2030
Revenues						
Total Revenues from User Rates ¹	\$12,899,565	\$12,899,565	\$13,286,552	\$16,432,692	\$16,432,692	\$16,432,692
Percent Increase to User Rates	0.00%	0.00%	3.00%	23.68%	0.00%	0.00%
Cumulative Percent Rate Increase	0.00%	0.00%	3.00%	27.39%	27.39%	27.39%
Dollar Amount Increase to Revenues		\$0	\$386,987	\$3,146,140	\$0	\$0
Total Other Revenues	\$606,355	\$134,262	\$145,432	\$151,762	\$168,461	\$180,604
Total Revenues	\$13,505,920	\$13,033,827	\$13,431,984	\$16,584,454	\$16,601,153	\$16,613,296
Less: Expenses						
Operating and Maintenance ²	\$5,686,878	\$5,857,484	\$6,033,208	\$6,214,205	\$6,400,631	\$6,592,650
PILOT Payment	\$1,590,000	\$1,590,000	\$1,590,000	\$1,590,000	\$1,590,000	\$1,590,000
Net Before Debt Service and Capital Expenditures	\$6,229,042	\$5,586,344	\$5,808,776	\$8,780,249	\$8,610,523	\$8,430,646
Debt Service						
Existing Debt P&I	\$4,314,817	\$4,307,461	\$3,971,197	\$3,962,499	\$3,969,742	\$3,962,401
New (2025-2034) Debt Service P&I	\$0	\$0	\$332,775	\$336,638	\$328,663	\$300,788
Total Debt Service	\$4,314,817	\$4,307,461	\$4,303,972	\$4,299,136	\$4,298,404	\$4,263,189
Transfer In (Out)	-\$140,000	-\$140,000	\$0	\$0	\$0	\$0
Less: Capital Improvements	\$10,815,616	\$5,463,000	\$5,580,000	\$4,705,000	\$2,150,000	\$2,325,000
Debt Proceeds	\$6,719,400	\$5,303,000	\$5,080,000	\$3,300,000	\$0	\$0
Net Annual Cash Flow	(\$2,321,991)	\$978,882	\$1,004,804	\$3,076,113	\$2,162,118	\$1,842,457
Restricted and Unrestricted Cash Balance:						
Balance at first of year	\$4,314,980	\$1,992,989	\$2,971,872	\$3,976,676	\$7,052,789	\$9,214,907
Net Annual Cash Flow Addition/(subtraction)	-\$2,321,991	\$978,882	\$1,004,804	\$3,076,113	\$2,162,118	\$1,842,457
Balance at end of year	\$1,992,989	\$2,971,872	\$3,976,676	\$7,052,789	\$9,214,907	\$11,057,364
"All-in" Debt Coverage	1.41	1.26	1.35	2.04	2.00	1.98
PSC Days Cash on Hand	(139)	(86)	(34)	119	223	308

Water: Impact on Avg. Res. Bill

Year	Water				
	Increase	Water Vol. Charge ¹	Water User Charge ²	Utility Bill (Quarterly)	Change Over Prior Year
2024		Tiered 5.58	Serv. + PFP 45.27	\$ 112.40	
2025	0.00%	5.58	45.27	\$ 112.40	\$ -
2026	0.00%	5.58	45.27	\$ 112.40	\$ -
2027	3.00%	5.75	46.63	\$ 115.77	\$ 3.37
2028	23.68%	7.11	57.67	\$ 143.18	\$ 27.41
2029	0.00%	7.11	57.67	\$ 143.18	\$ -
2030	0.00%	7.11	57.67	\$ 143.18	\$ -
2031	0.00%	7.11	57.67	\$ 143.18	\$ -
2032	0.00%	7.11	57.67	\$ 143.18	\$ -
2033	0.00%	7.11	57.67	\$ 143.18	\$ -
2034	0.00%	7.11	57.67	\$ 143.18	\$ -
Total Change over planning period					\$ 30.79

Notes:

1. Current water volumetric rate is \$5.58 per 100 cubic feet.
2. The water user charges include a quarterly service charge of \$25.65 plus a public fire protection charge of \$19.62 for a 5/8 inch meter.
3. The current Sewer volumetric rate is \$5.91 per 100 cubic feet and a service charge of \$36.31 for a 5/8 inch meter.
4. The usage is assumed to be 1,203 CF per quarter.

Water: Recommendations

- Complete SRC for 1/1/2027 and CRC for 1/1/28
- This plan identifies minimum recommended rate adjustment with
 - ✓ max use of cash above benchmark
 - ✓ Keep Debt Coverage above 1.4 (minimum recommendation)
- Plan risk exposure
 - ✓ Other CIP not identified by staff (upcoming unknown legal mandates, etc.)
- Identify other ratemaking goals (if any)

Sewer: Historical Rate Performance

Shown with no increase

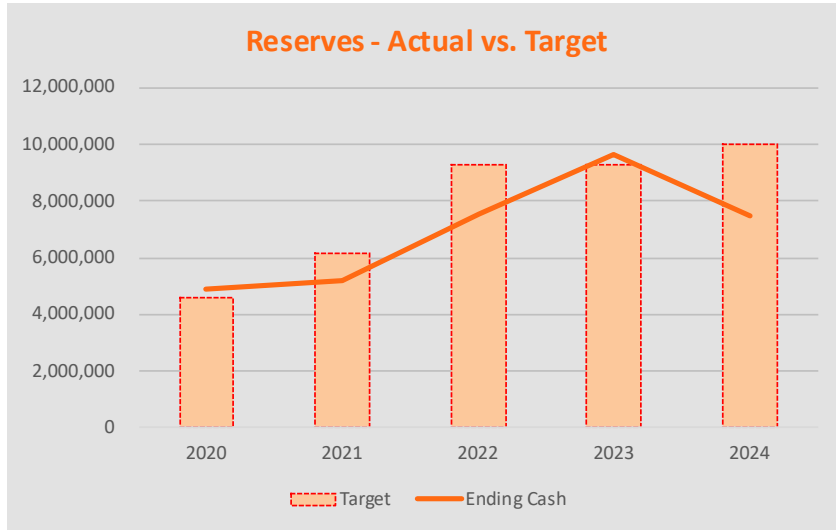
Revenue Requirement						Est	Budget
Component	Description	2020	2021	2022	2023	2024	2025
Cash Basis							
1	Operating and Maintenance	\$3,172,379	\$3,536,956	\$4,335,722	\$4,317,152	\$4,000,821	\$5,006,454
2	Debt	\$5,659,926	\$2,173,381	\$2,605,971	\$4,935,289	\$5,032,676	\$5,198,564
3	Cash Funded Capital	\$4,009,870	\$1,924,128	\$1,675,854	\$1,974,116	\$6,061,307	\$4,879,426
Less:							
	Other Revenue	\$391	\$8,674	\$2,173	\$2,000	\$383	\$146,789
	Interest Income	\$13,882	\$1,051	\$52,160	\$148,038	\$161,701	\$0
	Revenue Requirement (Costs less Other Income)	\$12,827,902	\$7,624,740	\$8,563,214	\$11,076,519	\$14,932,720	\$14,937,655
	User Rates Revenue	\$6,282,070	\$8,033,614	\$9,494,966	\$11,404,145	\$11,230,822	\$11,460,173
	Rate Adequacy	(\$6,545,832)	\$408,874	\$931,752	\$327,626	(\$3,701,898)	(\$3,477,482)
	Rate Adjustment Needed	104.20%	0.00%	0.00%	0.00%	32.96%	30.34%
Utility Basis (PSC)							
1	Operating and Maintenance	\$3,172,379	\$3,536,956	\$4,335,722	\$4,317,152	\$4,000,821	\$5,006,454
2	Depreciation	\$1,263,101	\$1,286,932	\$2,761,209	\$4,389,601	\$4,475,463	\$4,616,404
	NIRB	\$59,697,382	\$82,266,693	\$113,622,834	\$118,744,709	\$115,505,017	\$114,435,904
3	Typical ROI (2.5%)	\$1,492,435	\$2,056,667	\$2,840,571	\$2,968,618	\$2,887,625	\$2,860,898
Less:							
	Other Revenue	\$391	\$8,674	\$2,173	\$2,000	\$383	\$146,789
	Interest Income	\$13,882	\$1,051	\$52,160	\$148,038	\$161,701	\$0
	Revenue Requirement (Costs less Other Income)	\$5,913,642	\$6,870,830	\$9,883,169	\$11,525,333	\$11,201,825	\$12,336,967
	User Rates Revenue	\$6,282,070	\$8,033,614	\$9,494,966	\$11,404,145	\$11,230,822	\$11,460,173
	Rate Adequacy	\$368,428	\$1,162,784	(\$388,203)	(\$121,188)	\$28,997	(\$876,794)
	Rate Adjustment Needed	0.00%	0.00%	4.09%	1.06%	0.00%	7.65%

Notes:

^AIncludes recommended debt coverage at 1.4x annual debt payment

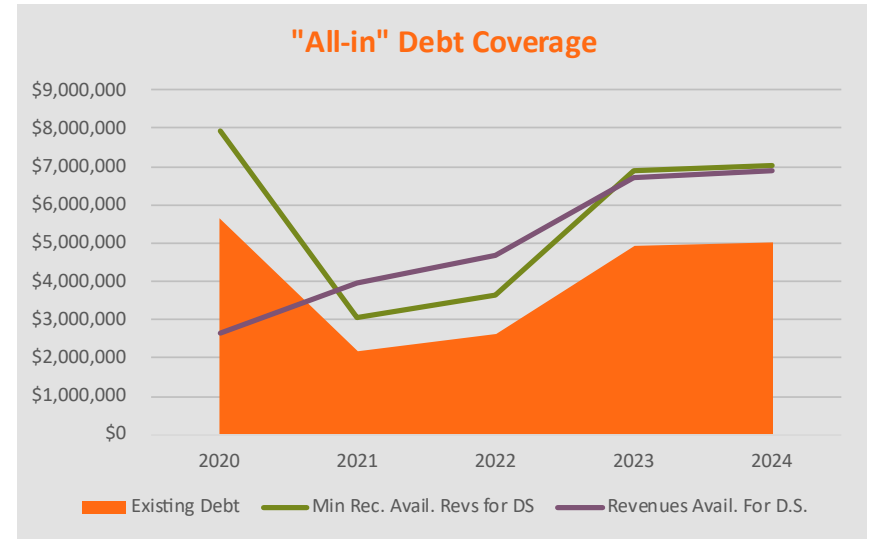
Let's investigate the history further...

Sewer: Historical Financial Indicators



- Reserves to fund deficits and capital (6 mo. Target)

- Break even debt coverage



Sewer: Future Projection

	Budget			Projected						
	2025	2026	2027	2028	2029	2030	2031	2032	2033	2034
Revenues										
Total Revenues from User Rates ¹	\$11,460,173	\$11,898,430	\$12,353,447	\$12,353,447	\$12,971,119	\$12,971,119	\$13,619,675	\$13,619,675	\$14,300,659	\$14,300,659
Percent Increase to User Rates	0.00%	3.82%	3.82%	0.00%	5.00%	0.00%	5.00%	0.00%	5.00%	0.00%
Cumulative Percent Rate Increase	0.00%	3.82%	7.79%	7.79%	13.18%	13.18%	18.84%	18.84%	24.79%	24.79%
Dollar Amount Increase to Revenues		\$438,257	\$455,017	\$0	\$617,672	\$0	\$648,556	\$0	\$680,984	\$0
Other Revenues										
Interest Income	\$0	\$114,851	\$149,285	\$190,425	\$226,914	\$270,083	\$307,391	\$352,959	\$394,781	\$446,348
Other Income	\$146,789	\$148,257	\$149,739	\$151,237	\$152,749	\$154,277	\$155,819	\$157,378	\$158,951	\$160,541
Total Other Revenues	\$146,789	\$263,108	\$299,024	\$341,662	\$379,663	\$424,359	\$463,210	\$510,337	\$553,732	\$606,889
Total Revenues	\$11,606,962	\$12,161,538	\$12,652,471	\$12,695,109	\$13,350,782	\$13,395,479	\$14,082,886	\$14,130,012	\$14,854,391	\$14,907,548
Less: Expenses										
Operating and Maintenance	\$5,006,454	\$5,294,648	\$5,453,487	\$5,617,092	\$5,785,604	\$5,959,173	\$6,137,948	\$6,322,086	\$6,511,749	\$6,707,101
PILOT Payment	\$485,000	\$0	\$0	\$0	\$0	\$0	\$0	\$0	\$0	\$0
Net Before Debt Service and Capital Expenditures	\$6,115,508	\$6,866,891	\$7,198,984	\$7,078,018	\$7,565,178	\$7,436,306	\$7,944,938	\$7,807,926	\$8,342,643	\$8,200,447
Debt Service										
Existing Debt P&I	\$5,198,564	\$5,145,218	\$4,815,860	\$4,816,469	\$4,813,643	\$4,807,181	\$4,806,927	\$4,815,888	\$4,809,312	\$4,812,050
New (2025-2034) Debt Service P&I	\$0	\$0	\$326,081	\$437,138	\$593,094	\$763,713	\$859,600	\$900,950	\$954,975	\$937,425
Total Debt Service	\$5,198,564	\$5,145,218	\$5,141,942	\$5,253,607	\$5,406,736	\$5,570,893	\$5,666,527	\$5,716,838	\$5,764,287	\$5,749,475
Transfer In (Out)	\$140,000	\$0	\$0	\$0	\$0	\$0	\$0	\$0	\$0	\$0
Less: Capital Improvements	\$2,800,000	\$3,100,000	\$2,600,000	\$2,400,000	\$2,600,000	\$2,300,000	\$0	\$0	\$0	\$0
Debt Issued/Grants/Aid	\$0	\$3,100,000	\$2,600,000	\$2,400,000	\$2,600,000	\$2,300,000	\$0	\$0	\$0	\$0
Net Annual Cash Flow	(\$1,743,056)	\$1,721,672	\$2,057,042	\$1,824,411	\$2,158,441	\$1,865,413	\$2,278,411	\$2,091,088	\$2,578,356	\$2,450,972
Restricted and Unrestricted Cash Balance:										
Balance at first of year	\$7,485,616	\$5,742,560	\$7,464,232	\$9,521,275	\$11,345,686	\$13,504,127	\$15,369,540	\$17,647,951	\$19,739,039	\$22,317,395
Net Annual Cash Flow Addition/(subtraction)	(\$1,743,056)	\$1,721,672	\$2,057,042	\$1,824,411	\$2,158,441	\$1,865,413	\$2,278,411	\$2,091,088	\$2,578,356	\$2,450,972
Balance at end of year	\$5,742,560	\$7,464,232	\$9,521,275	\$11,345,686	\$13,504,127	\$15,369,540	\$17,647,951	\$19,739,039	\$22,317,395	\$24,768,367
"All-in"Debt Coverage	1.20	1.33	1.40	1.35	1.40	1.33	1.40	1.37	1.45	1.43

Notes:
1) Assumes no changes in customer count or usage beyond Test Year.
2) Assumes 3.00% annual inflation beyond budget year.

Legend:
 Increase depicted to maintain with assumed O&M inflation
 Increase needed above inflationary adjustment

W&S: Impact on Avg. Res. Bill

Year	Water					Sewer					Utility Bill (Annual)	Change Over Prior Year	% of MHI (61,877)	Year	
	Increase	Water Vol. Charge ¹	Water User Charge ²	Utility Bill (Quarterly)	Change Over Prior Year	Increase	Sewer Vol. Charge ³	Sewer User Charge ³	Utility Bill (Quarterly)	Change Over Prior Year					
		<u>Tiered</u>	<u>Serv. + PFP</u>				<u>100CF</u>	<u>Gen Service</u>							
2024		5.58	45.27	\$ 112.40			5.91	36.31	\$ 43.42		\$ 623.27		1.01%	2024	
2025	0.00%	5.58	45.27	\$ 112.40	\$ -	0.00%	5.91	36.31	\$ 43.42	\$ -	\$ 623.27	\$ -	1.01%	2025	
2026	0.00%	5.58	45.27	\$ 112.40	\$ -	3.82%	6.14	37.70	\$ 45.08	\$ 1.66	\$ 629.91	\$ 6.64	1.02%	2026	
2027	3.00%	5.75	46.63	\$ 115.77	\$ 3.37	3.82%	6.37	39.14	\$ 46.80	\$ 1.72	\$ 650.29	\$ 20.38	1.05%	2027	
2028	23.68%	7.11	57.67	\$ 143.18	\$ 27.41	0.00%	6.37	39.14	\$ 46.80	\$ -	\$ 759.95	\$ 109.65	1.23%	2028	
2029	0.00%	7.11	57.67	\$ 143.18	\$ -	5.00%	6.69	41.10	\$ 49.14	\$ 2.34	\$ 769.31	\$ 9.36	1.24%	2029	
2030	0.00%	7.11	57.67	\$ 143.18	\$ -	0.00%	6.69	41.10	\$ 49.14	\$ -	\$ 769.31	\$ -	1.24%	2030	
2031	0.00%	7.11	57.67	\$ 143.18	\$ -	5.00%	7.02	43.15	\$ 51.60	\$ 2.46	\$ 779.14	\$ 9.83	1.26%	2031	
2032	0.00%	7.11	57.67	\$ 143.18	\$ -	0.00%	7.02	43.15	\$ 51.60	\$ -	\$ 779.14	\$ -	1.26%	2032	
2033	0.00%	7.11	57.67	\$ 143.18	\$ -	5.00%	7.37	45.31	\$ 54.18	\$ 2.58	\$ 789.46	\$ 10.32	1.28%	2033	
2034	0.00%	7.11	57.67	\$ 143.18	\$ -	0.00%	7.37	45.31	\$ 54.18	\$ -	\$ 789.46	\$ -	1.28%	2034	
Total Change over planning period					\$ 30.79						\$ 10.76	\$ 166.19			

Notes:

1. Current water volumetric rate is \$5.58 per 100 cubic feet.
2. The water user charges include a quarterly service charge of \$25.65 plus a public fire protection charge of \$19.62 for a 5/8 inch meter.
3. The current Sewer volumetric rate is \$5.91 per 100 cubic feet and a service charge of \$36.31 for a 5/8 inch meter.
4. The usage is assumed to be 1,203 CF per quarter.

Sewer: Recommendations

- Complete more frequent inflationary adjustments
- This plan identifies minimum rate adjustment with
 - ✓ Max use of cash above benchmark
 - ✓ Debt Coverage above 1.4 (minimum recommendation)
- Plan risk exposure
 - ✓ Other CIP not identified by staff (upcoming unknown legal mandates, etc.)
- Identify other ratemaking goals (if any)

Questions?



To: Wausau Waterworks Commission
From: Ben Brooks,
Wausau Waterworks- Wastewater Superintendent
Date: September 2, 2025
Subject: Sole Sourcing of Midwest Chemical for the purchase of Magnesium Hydroxide.

Dear Commissioners,

Midwest Chemical has extended its 2025 pricing of Magnesium Hydroxide delivered at \$.245/pound through February 28, 2026, with a \$.01/pound increase occurring March 1, 2026 – December 31, 2026.

Midwest Chemical offers a water-soluble Magnesium Hydroxide chemical whereas other manufacturers chemical creates gelling that causes clogging issues. The water-soluble type is more user friendly and eliminates extensive cleaning of piping meaning more man hours.

It would be my recommendation to accept the Midwest Chemical offered pricing for Magnesium Hydroxide and approve the sole source request for the 2025 budgeted amount of \$210,000.00.

Best regards,

Ben Brooks

Wausau Waterworks- Wastewater, Superintendent



December 18, 2024

To: Ben Brooks

Re: *Quote for Mag Hydroxide in bulk at Wausau Water Works*

On behalf of Midwest Chemical & Equipment, below is our proposed pricing

for your mag hydroxide needs from March 1, 2025 through February 28, 2026. Pricing and terms are as follows:

Product: Mag Hydroxide Pricing: \$0.245 per lb delivered

Based upon: 1.2 MM lbs annual usage; full bulk tanker deliveries

Terms: Net 20 days

Ordering: David Olson@phone/text 920-615-2288 or email djolson@midwestce.com

Sincerely,

Dave Olson

Confidential Prices quoted and agreement to ship are subject to customer's acceptance to Terms and Pricing listed above. All information in this email is strictly confidential and intended solely for delivery to and authorized use by the addressee(s) identified above and may contain privileged, confidential, proprietary and or trade secret information entitled to protection and/or exempt from disclosure under applicable law. If you are not the intended recipient, please take notice that any use, distribution or copying of this communication and /or any action taken or omitted to be taken in reliance upon it, is unauthorized and may be unlawful. •



August 22, 2025

To: Ben Brooks

Re: *Quote for Mag Hydroxide in bulk at Wausau Water Works*

On behalf of Midwest Chemical & Equipment, below is our proposed pricing

for your mag hydroxide needs from March 1, 2026 through December 31, 2026. Pricing and terms are as follows:

Product: Mag Hydroxide Pricing: \$0.255 per lb delivered

Based upon: 1.2 MM lbs annual usage; full bulk tanker deliveries

Terms: Net 20 days

Ordering: David Olson@phone/text 920-615-2288 or email djolson@midwestce.com

Sincerely,

Dave Olson

Confidential Prices quoted and agreement to ship are subject to customer's acceptance to Terms and Pricing listed above. All information in this email is strictly confidential and intended solely for delivery to and authorized use by the addressee(s) identified above and may contain privileged, confidential, proprietary and or trade secret information entitled to protection and/or exempt from disclosure under applicable law. If you are not the intended recipient, please take notice that any use, distribution or copying of this communication and /or any action taken or omitted to be taken in reliance upon it, is unauthorized and may be unlawful. •



**CITY OF WAUSAU
SOLE SOURCE PURCHASE JUSTIFICATION
REQUIRED FORM PURCHASE OF GOODS OR SERVICES EXCEEDING \$10,000**

Purchase of goods or services for no more than \$25,000 may be made without competition when it is agreed *in advance* between the Department Head and the Finance Director. Sole source purchasing allows for the procurement of goods and services from a single source without soliciting quotes or bids from multiple sources. Sole source procurement cannot be used to avoid competition, rather it is used in certain situations when it can be documented that a vendor or contractor holds a unique set of skills or expertise, that the services are highly specialized or unique in character or when alternate products are unavailable or unsuitable from any other source. Sole source purchasing should be avoided unless it is clearly necessary and justifiable. The justification must withstand public and legislative scrutiny. The Department Head is responsible for providing written documentation justifying the valid reason to purchase from one source or that only one source is available. Sole source purchasing criteria include: urgency due to public safety, serious injury financial or other, other unusual and compelling reasons, goods or service is available from only one source and no other good or service will satisfy the City’s requirements, legal services provided by an attorney, lack of acceptable bids or quotes, an alternate product or manufacturer would not be compatible with current products resulting in additional operating or maintenance costs, standardization of a specific product or manufacturer will result in a more efficient or economical operation or aesthetics, or compatibility is an overriding consideration, the purchase is from another governmental body, continuity is achieved in a phased project, the supplier or service demonstrates a unique capability not found elsewhere, the purchase is more economical to the city on the basis of time and money of proposal development.

1. Sole source purchase under \$10,000 shall be evaluated and determined by the Department Head.
2. Sole source purchase of \$10,001 to \$25,000 a formal written justification, shall be forwarded to the Finance Director who will concur with the sole source or assist in locating additional competitive sources.
3. Sole source purchase exceeding \$25,000 must be approved by the Finance Committee.

Ongoing Sole Source – 365 days **One Time Sole Source Request**

1. Provide a detailed explanation of the good or service to be purchased and vendor.
Magnesium Hydroxide in bulk delivery from Midwest Chemical. The Magnesium Hydroxide will be delivered via tanker load and stored at the wastewater treatment plant inside of the bulk storage tanks located in Structure 610.
2. Provide a brief description of the intended application for the service or goods to be purchased.
Magnesium Hydroxide chemical will be used at the wastewater treatment facility to increase the alkalinity of the wastewater and stabilize pH levels of the effluent wastewater being discharged to the Wisconsin River. This chemical will be used for pH control to meet WPDES permit requirements as well as to increase the alkalinity that aides in the buffering capacity of the wastewater as a whole.
3. State why other products or services that compete in the market will not or do not meet your needs or comply with your specifications.
The Wastewater Treatment Facility has been using this chemical for approximately three years, achieving excellent results, reporting no pH violations to the WDNR. This chemical is water soluble making ease for clean-up whereas other manufacturers’ products gel up when water is added, causing clogging issues inside the piping that conveys this chemical. If a different form of Mag-Lime was to be used, it would call for a complete overhaul of the chemical feed system and the entire chemical feed system would require extensive cleaning which would involve extensive man hours.

4. Describe your efforts to identify other vendors to furnish the product or services.

Other Vendors do not offer a water-soluble form of Magnesium Hydroxide that Midwest Chemical does. The other forms would create clogging issues and the water-soluble form makes cleaning piping more efficient by simply flushing water through the piping.

5. How did you determine that the sole source vendor's price was reasonable?

The cost is reasonable in its nature. It does not exceed that which would be incurred by another Utility in the conduct of competitive business. This determination is based off historical data from previous years. As noted on the Midwest quote. Pricing will be honored through December 31, 2026.

6. Which of the following best describes this sole source procurement? Select all that apply.

- Product or vendor is uniquely qualified with capability not found elsewhere.
- Urgency due to public safety, serious financial injury or other. (explain)
- The procurement is of such a specialized nature that by virtue of experience, expertise, proximity or ownership of intellectual property
- Lack of acceptable quotes or bids.
- Product compatibility or the standardization of a product.
- Continuation of a phased project.
- Proposal development is uneconomical.

Department: Wausau Water Works – Wastewater Treatment Facility

Preparer: Ben Brooks

Vendor Name: Midwest Chemical

Expected amount of purchase or contract: \$210,000.00 (2025 Budgeted Amount)

Department Head Signature:

Date:

Finance Director Signature:

Date:



To: Wausau Waterworks Commission

From: Ben Brooks, Wausau Waterworks-Wastewater Superintendent

Date: September 2, 2025

Subject: Purchase of UTV & Golf Carts with funds procured from the sale of general assets.

Dear Commissioners,

The Sewer Utility is requesting approval to proceed with the purchase of a 2026 UTV and golf carts with funds procured from the sale of three general assets at the recent Integrity Auction. The mobility of the UTV and golf cart would enable staff to travel anywhere on-site at the wastewater treatment plant as well as making more site transportation readily available.

- Sale of General Assets= \$53,000.00
- Cooperative Pricing of 2026 UTV= \$32,138.00
- Golf Carts Pricing= To be determined, not to exceed the remaining balance of \$20,862.00

It would be my recommendation to approve the purchase of the 2026 UTV and future purchase of golf carts with the remaining balance, not to exceed \$20,862.00

Best regards,

Ben Brooks

Wausau Waterworks – Wastewater, Superintendent



SERVICE CENTER

P O Box 122 Stratford WI 54484 715-687-3128

WAUSAU WATERWORKS

Sales Contract

Date 08/22/2025

Order No.

Salesman Kyle Imhoff

430 ADRIAN STREET
WAUSAU, WI 54401

H

C 715-261-6941

E Ben.Brooks@wausauwi.gov

By making a NON-REFUNDABLE DEPOSIT I hereby agree to purchase the following unit(s) from you under the terms and conditions specified. Delivery is to be made as soon as possible. It is agreed, however, that neither you nor the manufacturer will be liable for failure to make delivery.

Unit Information

New/U	Year	Make	Model	Serial No.	Model Name	Price(Incl factory options)
New	2026	CAN-AM	9HTA		PRO LIMITED CAB H	\$33,499.00

Parts and Accessories	Price	Qty	Ext Price	Manufacturer Retail Price	
					\$33,499.00
				Rebates	(\$1,500.00)
				Cooperative Pricing	(\$1,750.00)
				Dealer Price	\$30,249.00
				Freight	\$1,595.00
				Dealer Prep	\$294.00
				Factory Installed Options	\$0.00
				Parts & Accessories	\$0.00
				Installation Fee	\$0.00
				Service Contract 0 Months	\$0.00
				Unit Subtotal	\$32,138.00
				Trade Allowance	\$0.00
				Payoff	\$0.00
				Net Trade	\$0.00
				Net Sale (Unit Subtotal - Net Trade)	\$32,138.00
				Sales Tax	\$0.00
				Sub-Total with Tax	\$32,138.00
				DNR	\$0.00
				Finance Fee	\$0.00
				Cash Down Payment	\$0.00
				Amount to Pay/Finance	\$32,138.00

DUE TO ECONOMIC VARIABLES, PRICE SUBJECT TO CHANGE BASED ON MANUFACTURING SURCHARGE & PRICE INCREASE

Trade Information

***Monthly Payment of \$32,138.00 For 1 Months at 0.00% Interest**

NOTICE TO BUYER: (1) Do not sign this agreement before you read it or if it contains any blank spaces to be filled in. (2) You are entitled to a completely filled in copy of this agreement. (3) If you default in the performance of your obligations under this agreement, the vehicle may be repossessed and you may be subject to suit and liability for the unpaid indebtedness evidenced by this agreement. (4) ALL CREDIT CARDS WILL INCUR A 3.99% CONVENIENCE FEE.

TRADE-IN NOTICE: Customer represents that all trade in units described above are free of all liens and encumbrances except as noted.

*With Approved Credit. Interest rates and monthly payment are approximate and may vary from those determined by the lender.

Customer Signature _____ Dealer Signature _____

Thank You for Your Business!



To: Wausau Water Works Commission
From: Scott Boers
Water Operations Superintendent
Date: September 2, 2025
Subject: Setting PFAS Target Levels and Granular Activated Carbon (GAC)
Replacement Schedule

Dear Commissioners,

US EPA, WI DNR and WI DHS all either set standards or make recommendations for standard levels of contaminants. Maximum Contaminant Levels (MCLs) for PFOA and PFOS at Parts Per Trillion (ppt).

Environmental Protection Agency (EPA)	4ppt each, not enforceable until 2031
WI Department of Natural Resources (DNR)	70ppt combined
WI Department of Health Services (DHS)	20ppt combined, revised in 2025 to 4ppt each

Past recommendation from DHS to the DNR was to set their levels at 20ppt. DNR didn't adopt that 20ppt, they adopted 70ppt and set the standard there. The EPA rule of (4ppt) was going into place in 2027 so that's when compliance was going to be required. Recently EPA decided to move that compliance date out to 2031.

The DNR is mandating public notification for PFAS levels exceeding the 20ppt DHS advisory level. It is not clear as to when they will change the notification requirement to the new DHS recommended levels. All indications from EPA suggest 4ppt will be the standard for PFOA and PFOS in 2031.

With our GAC system, we're currently at non-detect levels in our finished water. Sampling indicates that PFOA will most likely breakthrough some of the vessels in the next few months. Because of the regulatory inconsistencies and significant costs associated with the operation of the GAC system, staff would like direction targeting PFAS levels prior to their being adopted standards in place.

Staff would recommend operating the system to just more than 4ppt prior to new standards being put in place. This would allow flexibility to collect the information necessary to make accurate predictions, without having any regulatory exceedances. Operating in this range will provide the ability to get the most useful life from the carbon allowing for cost effective Gac changeouts in the future.