



OFFICIAL NOTICE & AGENDA
REGULAR MEETING

MEETING: Historic Preservation Commission
DATE/TIME: Wednesday, June 24, 2026, at 4:30 PM
LOCATION: Wausau City Hall — Maple Room
407 Grant Street, Wausau WI, 54403

MEMBERS:
Blake Opal-Wahoske (C) Jeffrey Klapperich
Christine Martens (VC) Keene Winters
Bruce Trueblood Brad Lenz
Dave Oberbeck (Ex Officio)
Patrick Bacher Bill Herbert
Aaron Griner (Ex Officio)

AMENDED

1 Consideration of the minutes of the preceding meeting(s).

May 27, 2026 Regular Historic Preservation Commission and June 9, 2026 Historic Preservation Commission Ad Hoc Meeting Minutes

2 Discussion and possible action.

- a. Authorizing a public hearing for landmarking Memorial Bridge (Scott Street).
- b. Authorizing a public hearing for landmarking Thom Field, 1601 N 10th Street.

3 Discussion.

- a. Update and discussion on landmark consideration of the Schofield House, 1301 Steuben Street.
- b. Update and discussion on landmark or district consideration of UWSP at Wausau, 518 S 7th Ave.
- c. Discussion regarding future landmarks for consideration.

4 Adjournment.

Blake Opal-Wahoske, Chair

**NOTICE POSTED AT CITY HALL (407 GRANT STREET) AND
TRANSMITTED TO THE OFFICIALLY DESIGNATED NEWSPAPER**

DATE: June 22, 2026

TIME: 3:00pm

POSTED BY: Michelle Van Krey

In accordance with the requirements of Title II of the Americans with Disabilities Act of 1990 (ADA), the City of Wausau will not discriminate against qualified individuals with disabilities on the basis of disability in its services, programs or activities. If you need assistance or reasonable accommodations in participating in this meeting or event due to a disability as defined under the ADA, please call the ADA Coordinator at (715) 261-6622 or ADAServices@wausauwi.gov to discuss your accessibility needs. We ask your request be provided a

minimum of 72 hours before the scheduled event or meeting. If a request is made less than 72 hours before the event the City of Wausau will make a good faith effort to accommodate your request.



City of Wausau
(715) 261-6500 | clerk@wausauwi.gov
wausauwi.gov





OFFICIAL MINUTES
REGULAR MEETING

MEETING: Historic Preservation Commission
DATE/TIME: Wednesday, May 27, 2026, at 4:00 PM
LOCATION: Wausau City Hall — Maple Room
407 Grant Street, Wausau WI, 54403

MEMBERS:
Blake Opal-Wahoske (C) Jeffrey Klapperich
Christine Martens (VC) Keene Winters
Bruce Trueblood (Ex Officio) Brad Lenz
Dave Oberbeck (Ex Officio) Bill Herbert
Patrick Bacher (Ex Officio)
Aaron Griner

Members Present: Blake Opal-Wahoske, Christine Martens, Patrick Bacher, Dave Oberbeck, Jeffrey Klapperich, Keene Winters, Aaron Griner

Members Not Present:

Members Excused: William Hebert, Bruce Trueblood

Present 7, Not Present 0, Excused 2

Noting the presence of a quorum, the Chairperson called the meeting to order at 04:00 PM.

1 Consideration of the minutes of the preceding meeting(s).

February 25, 2026 Regular Historic Preservation Commission Minutes

Motion by Commission Member Martens, seconded by Commission Member Bacher, to approve Regular Historic Preservation Commission Minutes. Motion Passed 6-0-1, Commission Member Keene Winters abstained.

2 Presentations.

- a.** Historic Preservation Commission: Roles, Ordinance Framework & Local Preservation Tools

Chair Opal-Wahoske reviewed the roles and responsibilities of the commission, relevant processes, the ordinance which guides the commission and relevant resources and tools.

3 Discussion and possible action.

- a.** Moving standard meeting time to 4:30pm.

Motion by Commission Member Winters, seconded by Commission Member Martens, to approve moving the standard meeting time to 4:30pm. Motion Passed 7-0.

- b.** Installing Historic District signs in each historic district in the City of Wausau.

Martens explained that two of the districts have signage but three districts do not have any signage. The Commission asked that Lenz talk with the city sign shop to determine how the signs were originally made and installed and determine if there is a budget for the project.

Motion by Commission Member Martens, seconded by Commission Member Oberbeck, to direct staff to investigate the logistics of manufacturing and funding signage for the remaining three districts. Motion Passed 7-0.

4 Discussion.

a. Discussion on current restoration efforts.

Chair Opal-Wahoske shared that the Woodson History Center has restoration work happening on the roof. Additionally, he noted that the porch on Fulton St, which the Commission approved a certificate of appropriateness for, is coming along nicely. Oberbeck shared that the Grand Theater restorations have begun. Winters shared that the work at Zion Church has been completed.

b. Discussion regarding future landmarks for consideration.

Martens suggested taking a look at the National and State Landmark registries and ensuring that those properties are also locally landmarked. Martens will put together a list. Martens added Thom Field and the Margaret Schofield House. Opal-Wahoske suggested Memorial Bridge on Scott Street and the UWSP at Wausau campus as a district. The chair or staff will have a conversation with the County to determine where they are in the divestment process.

5 Adjournment.

Motion by Commission Member Oberbeck, seconded by Commission Member Martens, to approve adjourn. Motion carried. Meeting adjourned at 05:04 PM.

The recording of this meeting may be viewed on YouTube [@CityofWausauMeetings](https://www.youtube.com/@CityofWausauMeetings)



City of Wausau
(715) 261-6500 | clerk@wausauwi.gov
wausauwi.gov





OFFICIAL MINUTES
SUBCOMMITTEE MEETING

MEETING: Historic Preservation Commission
DATE/TIME: Tuesday, June 9, 2026, at 4:00 PM
LOCATION: Wausau City Hall — Maple Room
407 Grant Street, Wausau WI, 54403

MEMBERS:
Blake Opal-Wahoske (C) Keene Winters
Christine Martens (VC) Jeffrey Klapperich
Bruce Trueblood (Ex Officio) Brad Lenz
Dave Oberbeck Bill Herbert
Patrick Bacher (Ex Officio)
Aaron Griner

Members Present: Blake Opal-Wahoske, Christine Martens, Patrick Bacher, Bruce Trueblood, Jeffrey Klapperich, Keene Winters

Members Not Present: Dave Oberbeck

Members Excused: Brad Lenz, Aaron Griner

Present 6, Not Present 1, Excused 2

Noting the presence of a quorum, the Chairperson called the meeting to order at 04:00 PM.

1 Discussion and possible action.

a. Certificate of Appropriateness for 803 Franklin Street (Holster Management)

The property manager shared that the work is being done on the porch due to a lead hazard. Chair Opal-Wahoske reviewed the scope of the project for the commission. The Commission asked for clarification that the decorative details will be maintained. The contractor will make every attempt to find materials that will replicate the decorative pieces.

Motion by Commission Member Martens, seconded by Commission Member Winters, to approve the certificate of appropriateness with the recommendation to maintain the sympathetic nature of the house. Motion Passed 6-0.

2 Adjournment.

Motion by Commission Member Martens, seconded by Commission Member Bacher, to adjourn. Motion carried. Meeting adjourned at 4:09 PM.

The recording of this meeting may be viewed on
YouTube [@CityofWausauMeetings](#)



City of Wausau
(715) 261-6500 | clerk@wausauwi.gov
wausauwi.gov





Wausau Historic Preservation Commission Historic Resource Nomination Form

Return form to:
Historic Preservation Commission
407 Grant St
Wausau, WI 54403
or
wausaudevelopment@wausauwi.gov

1. Identification of Historic Resource

Resource Type (check one):

Landmark Historic District

Common Name: _____

Historic Name (if known): _____

Current Use: _____

Location of Historic Resource

Street Address: _____

Parcel Number(s): _____

(complete if known, otherwise this will be completed by staff or commission members)

Legal Description (attach continuation sheets if necessary):

(complete if known, otherwise this will be completed by staff or commission members)

2. Form Prepared By

Name and Title: _____

Organization Represented (if applicable): _____

Relationship to Property (check one):

- Owner Owner Representative
- Community Member Preservation Commission

Address: _____

Telephone Number: _____

Email Address: _____

3. General Historical Data

(fill out to the best of your ability)

Original Owner: _____

Original Use: _____

Architect/Builder/Designer: _____

Architectural Style: _____

Date of Construction / Period of Significance: _____

Moved or Original Site: _____

Physical Condition (excellent, good, fair, poor, deteriorated, ruins):

4. Describe Present and Original Exterior Character and Features

(Use continuation sheets if necessary)

5. Describe Significance of Property and Conformance to Designation Criteria

(Per City of Wausau Historic Preservation Ordinance) (select all that apply)

- Associated with broad patterns of cultural, political, economic, or social history.
- Associated with important persons or events in local, state, or national history.
- Distinguishing characteristics of an architectural type, period, or method of construction.
- Representative of the work of a master builder, designer, or architect.

Provide detailed explanation:

6. Bibliographical References

Additional Information (if available)

- Site Map Attached
- Photographs Attached
- Supplemental Materials Attached

As the preparer of this document, I affirm that this nomination is complete and accurate to the best of my knowledge.

Signature: _____

Printed Name: _____

Date Submitted: _____

Return form to:
Historic Preservation Commission
407 Grant St
Wausau, WI 54403
or
wausaudevelopment@wausauwi.gov

Memorial Bridge HPC Local Landmark Nomination

4. Describe Present and Original Exterior Character and Features (Use continuation sheets if necessary)

Originally completed in 1928, Memorial Bridge was Wausau's first permanent reinforced concrete bridge and represented an advanced bridge design for its era. Constructed of reinforced concrete with steel reinforcement, the bridge featured multiple concrete arch spans, ornamental balustrades, decorative globe streetlights mounted on substantial concrete standards, and prominent end posts. The bridge's Classical-inspired design and architectural detailing reflected national trends in civic infrastructure during the late 1920s and was described during construction as "a piece of high-class concrete architecture." Dedicated to the World War I veterans of Marathon County, the bridge served both a practical transportation function and a commemorative civic purpose.

The majority of the bridge was removed and replaced in 1983 by the present Scott Street Bridge. Today, two sections of the original Memorial Bridge remain on the west end of the crossing, consisting of portions of the original concrete balustrades, end posts, decorative light standards, and commemorative plaque. Although weathering and deterioration are evident, these surviving features retain the character-defining elements of the original 1928 design and continue to convey the craftsmanship, appearance, and historic significance of the bridge. The remnants serve as a highly visible landmark and physical reminder of Wausau's first permanent concrete bridge and its long-standing role as a community memorial.

5. Describe Significance of Property and Conformance to Designation Criteria (Per City of Wausau Historic Preservation Ordinance) (select all that apply)

- Associated with broad patterns of cultural, political, economic, or social history.*
- Associated with important persons or events in local, state, or national history.*
- Distinguishing characteristics of an architectural type, period, or method of construction.*
- Representative of the work of a master builder, designer, or architect.*

Provide detailed explanation:

Memorial Bridge is significant for its association with the transportation and civic development of Wausau during the early twentieth century. Constructed between 1926 and 1928, the bridge replaced the deteriorating "High Bridge" and was designed to accommodate the rapidly increasing automobile traffic of the era. As Wausau's first permanent reinforced concrete bridge, it represented a major public infrastructure investment jointly funded by the City of Wausau, Marathon County, and the State of Wisconsin. The bridge connected the east and west sides of the city for more than fifty-five years and reflected broader patterns of urban growth, modernization, and public works development occurring throughout Wisconsin and the nation during the 1920s.

The property is also significant for its association with the commemoration of World War I veterans. Throughout the planning and construction process, members of the American Legion advocated for the bridge to serve as a memorial to Marathon County residents who served and died during the First World War. Their efforts culminated in the official dedication of the structure as Memorial Bridge in August 1928 during the Wisconsin American Legion Convention held in Wausau. The bridge dedication was part of a larger civic celebration that included a visit by President Calvin Coolidge, who crossed the newly completed bridge while attending convention events. The bridge remains one of the community's most visible surviving memorials associated with the generation that emerged from World War I and sought to commemorate its sacrifices through public monuments and civic infrastructure.

Architecturally, the surviving sections embody the distinctive characteristics of early twentieth-century reinforced concrete bridge design. The original structure featured concrete arch spans, ornamental balustrades, decorative globe light standards, and Classical-inspired detailing commonly employed on civic infrastructure projects of the period. Although most of the bridge was removed in 1983, the remaining balustrades, end posts, and light standards retain sufficient integrity to illustrate the design, materials, workmanship, and aesthetic qualities that characterized the original structure. These surviving elements provide a rare and tangible example of the architectural treatment applied to public infrastructure during a transformative period in Wausau's history and continue to communicate the bridge's historic and commemorative significance.



WARNING
DO NOT WALK ON TOE BOARD
ON LOADING OR UNLOADING.
WILL BEKAY CONSTRUCTION

ELEVATOR
CEREAL MILL



PROGRESS SLOW—The work of placing the ornamental railing on the new high bridge is apparently progressing slowly, but gradually it is taking form and it is now possible to see something of the graceful beauty the structure will have when completed. There is much other work also, to be finished, including the laying of the concrete approaches, and it will be quite a while before the bridge will be opened to traffic.

HIGH BRIDGE OPEN—The new high bridge was opened to traffic this morning at 8:00 o'clock and within a few hours drivers were showing a decided preference for travel over the structure rather than over the slough bridge. The new bridge is a handsome structure built in a graceful curve, and the wide roadway is appreciated by drivers.

COMMON COUNCIL—There will

Wausau Post Holds Dedication Service "Memorial Bridge"

Commander Megan and State Commander Schneller Speak at Brief Ceremony

Attended by several hundred persons, many of whom were prominent in state Legion circles, the newly constructed bridge at the west end of Scott street, formerly known as the high bridge, was dedicated late yesterday afternoon and it will hereafter be known as "Memorial" bridge.

Commander Paul J. Megan of the local post opened the ceremony with a few brief remarks, telling those present why the bridge was to be dedicated and for what purpose. He said that to honor those persons who gave their lives for their country was a fitting ceremony and in no better way could this be done than to dedicate to them the newest bridge in the city, a monument of concrete and steel.

The Rev. L. M. Schorn of Wausau, chaplain of the state department, offered the prayer and he was followed on the program by Colonel Frank J. Schneller of Neenah, commander of the Wisconsin department of the Legion.

Colonel Schneller said that no dedication ceremony was more fitting to the occasion than this in which an avenue for traffic, thoroughfare which shows the progress of the city of Wausau, is dedicated to those from the county who gave their lives during the war. He said many structures have been dedicated to victory, to individuals and to battles, but the dedicating of a bridge over which the traffic travels day in and day out all the year, is by far a better memorial to those soldiers and sailors who died as a result of their activities during the war.

On the bronze plaque laid on the north railing of the bridge and at the center of the structure were the words: "Memorial Bridge. This bridge was dedicated by Talbot Montgomery post No. 10 of the American Legion in honor of the soldiers and sailors of Marathon county who gave their lives in defense of their country."

For two years a committee of the local post had been working to secure the privilege to name the bridge and to dedicate it in this manner and it was only recently that the state highway commission granted the post this honor. The post started to work on the project when it was first made known that a new bridge would be constructed at the end of Scott street to replace the old bridge which had been condemned.

Good evening

MEMORIAL BRIDGE

THIS TABLET ERECTED BY THE TALBOT MONTGOMERY POST NO. 10 OF THE AMERICAN LEGION, IN MEMORY OF THE SOLDIERS AND SAILORS OF MARATHON COUNTY, WISCONSIN, WHO GAVE THEIR LIVES IN DEFENSE OF THEIR COUNTRY

The Scott Street Bridge is actually Memorial Bridge, a structure dedicated in 1928 to Marathon County servicemen who lost their lives. This plaque had been affixed to the bridge ever since it was built. With the bridge awaiting demolition, the plaque has been removed and there is some talk of putting it back near the new bridge when it's completed in August 1983. A story about the Wausau landmark is in today's Focus.

—Photo by Bob Radunz

MEMORIAL BRIDGE

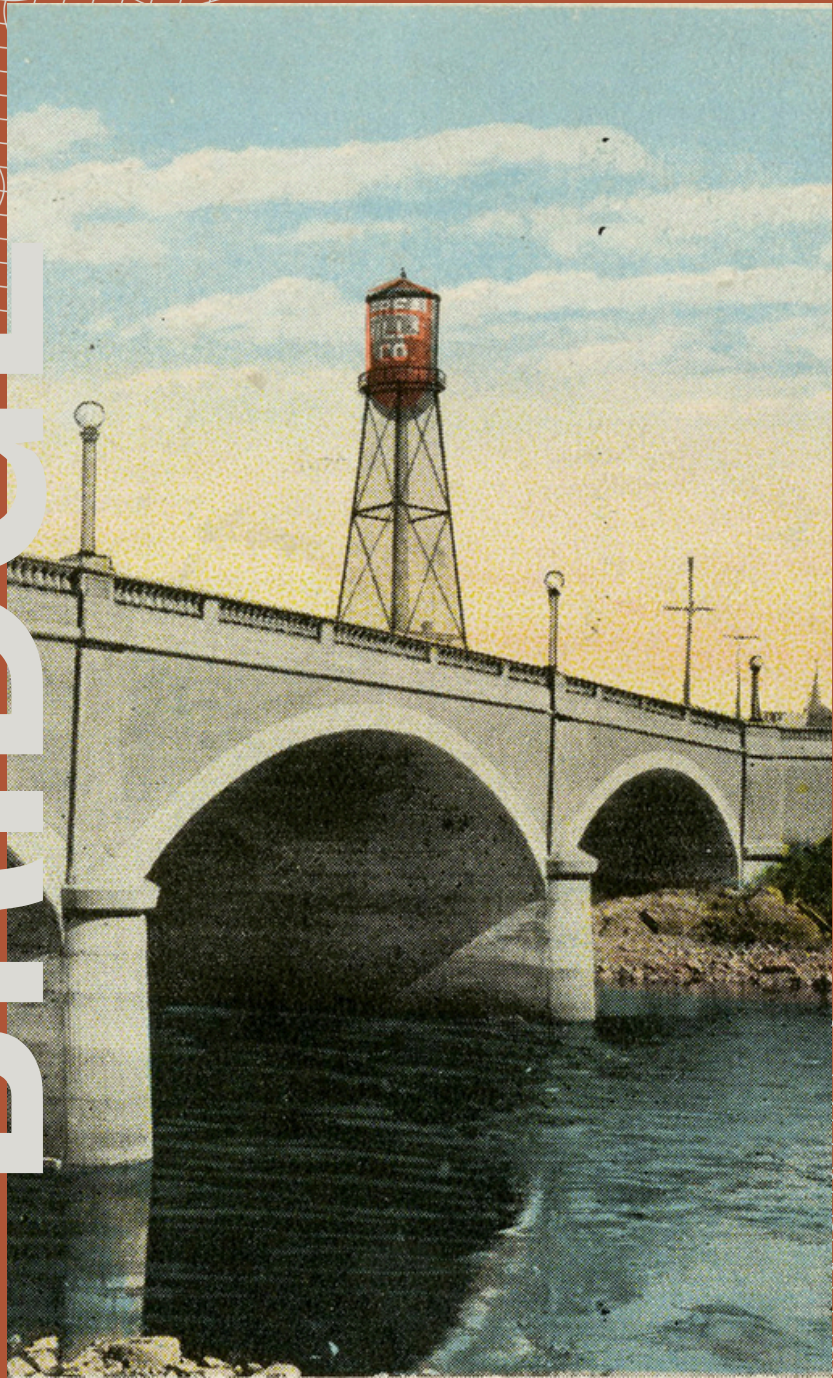
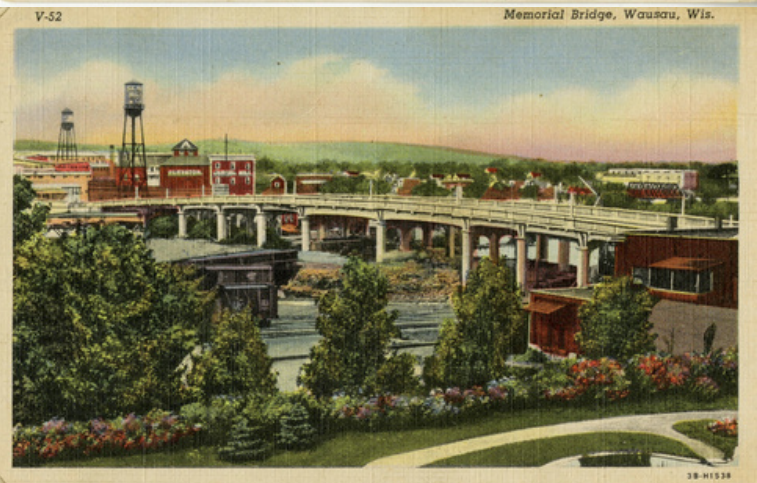
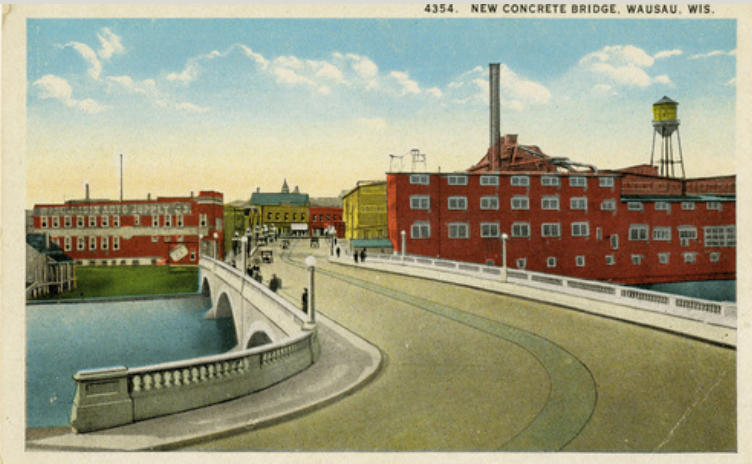
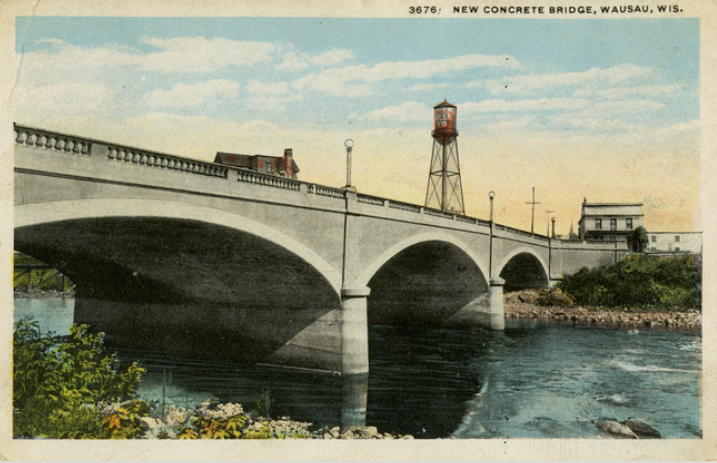
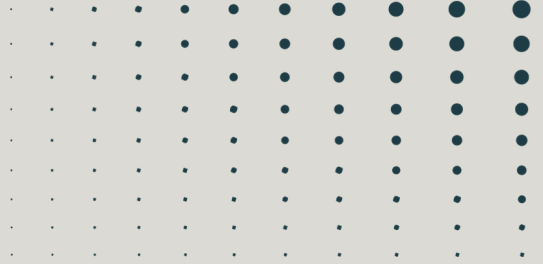




Photo References

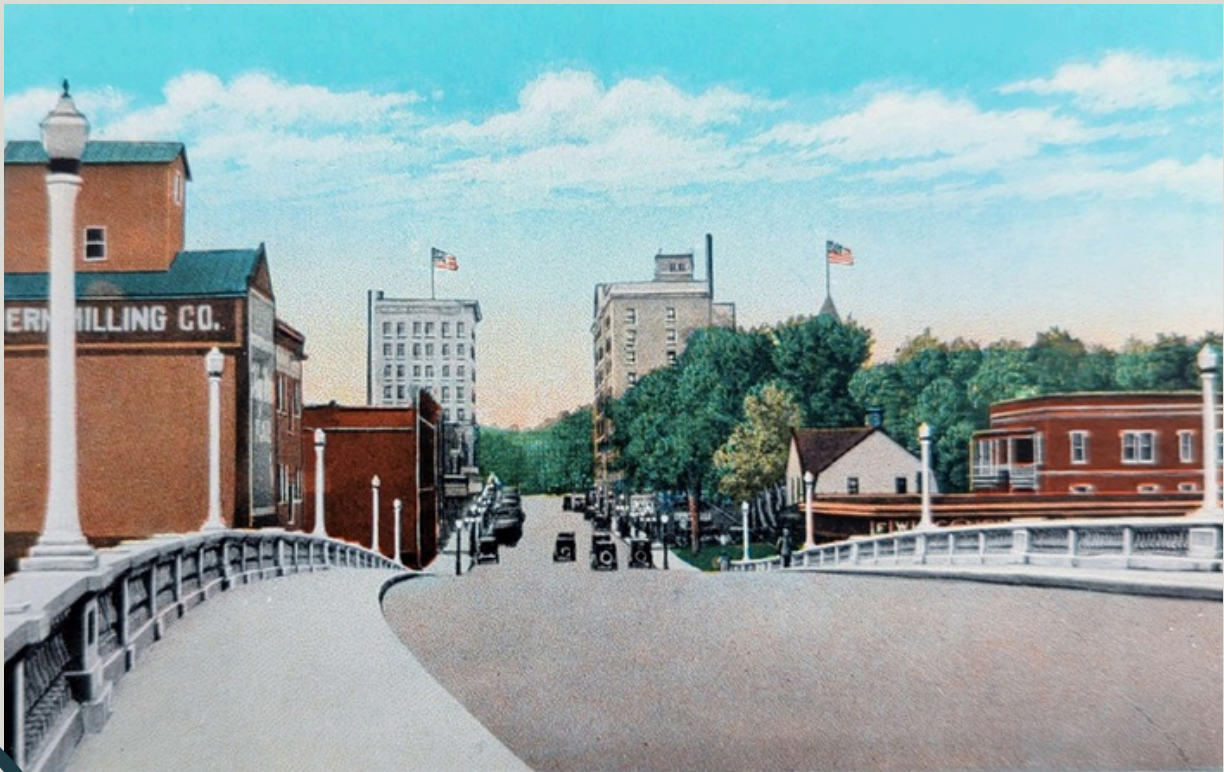


Quick Facts

Thousands attended the dedication of Memorial Bridge when it opened. It was constructed of 4,100 yards of concrete, and feature 1,017 ornate ballisters and globe street lights. The four pervious bridges were constructed of wood. All that remains of the bridge today are the two sections on the west end of Scott Street Bridge. The memorial bridge connected residents and visitors for 55 years.

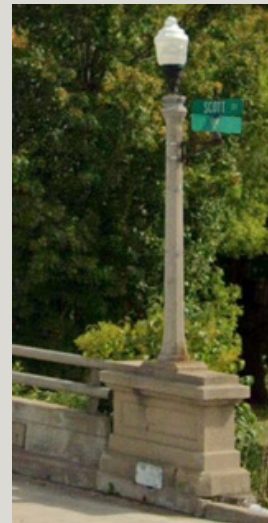
	Built in 1928		Dedicated to World War I Veterans of Marathon County
---	----------------------	---	---

	1st Permanent Concrete Bridge in Wausau		Replaced in 1983
--	--	--	-------------------------



What Remains Today

Today, what remains of the bridge are two sections of the balusters and two light posts. It was rededicated in 2021 by the American Legion Post 10. However, the condition of these original architectural elements is deteriorating and requires restoration. Preserving historic public infrastructure such as bridges safeguards the craftsmanship, engineering, and community stories that connect generations while maintaining visible links to our shared past.





Wausau Historic Preservation Commission Historic Resource Nomination Form

Return form to:
Historic Preservation Commission
407 Grant St
Wausau, WI 54403
or
wausaudevelopment@wausauwi.gov

1. Identification of Historic Resource

Resource Type (check one):

Landmark Historic District

Common Name: _____

Historic Name (if known): _____

Current Use: _____

Location of Historic Resource

Street Address: _____

Parcel Number(s): _____

(complete if known, otherwise this will be completed by staff or commission members)

Legal Description (attach continuation sheets if necessary):

(complete if known, otherwise this will be completed by staff or commission members)

2. Form Prepared By

Name and Title: _____

Organization Represented (if applicable): _____

Relationship to Property (check one):

- Owner Owner Representative
- Community Member Preservation Commission

Address: _____

Telephone Number: _____

Email Address: _____

3. General Historical Data

(fill out to the best of your ability)

Original Owner: _____

Original Use: _____

Architect/Builder/Designer: _____

Architectural Style: _____

Date of Construction / Period of Significance: _____

Moved or Original Site: _____

Physical Condition (excellent, good, fair, poor, deteriorated, ruins):

4. Describe Present and Original Exterior Character and Features

(Use continuation sheets if necessary)

5. Describe Significance of Property and Conformance to Designation Criteria

(Per City of Wausau Historic Preservation Ordinance) (select all that apply)

- Associated with broad patterns of cultural, political, economic, or social history.
- Associated with important persons or events in local, state, or national history.
- Distinguishing characteristics of an architectural type, period, or method of construction.
- Representative of the work of a master builder, designer, or architect.

Provide detailed explanation:

6. Bibliographical References

Additional Information (if available)

- Site Map Attached
- Photographs Attached
- Supplemental Materials Attached

As the preparer of this document, I affirm that this nomination is complete and accurate to the best of my knowledge.

Signature: _____

Printed Name: _____

Date Submitted: _____

Return form to:
Historic Preservation Commission
407 Grant St
Wausau, WI 54403
or
wausaudevelopment@wausauwi.gov

Thom Field HPC Local Landmark Nomination

4. Describe Present and Original Exterior Character and Features (Use continuation sheets if necessary)

Thom Field is a historic athletic stadium located at Stark Street and 10th Street in Wausau. Dedicated on September 7, 1951, the facility was constructed as the Wausau School District's primary outdoor athletic venue after it became apparent that the original Wausau High School campus lacked sufficient land for athletic fields. The stadium was developed with a football field, running track, spectator seating, press facilities, lighting, and supporting infrastructure designed to accommodate large-scale school and community athletic events. Its site planning and layout were intended to serve the growing educational and recreational needs of the community and remain largely consistent with its original purpose.

Today, Thom Field continues to serve as the Wausau School District's premier outdoor athletic facility and retains its historic function as a gathering place for student athletics and community events. While improvements and modernization have occurred over the years, including upgrades to athletic surfaces, seating, lighting, and support facilities, the property continues to convey its historic character as a mid-twentieth-century educational and athletic complex. The field, track, grandstand, and overall stadium setting remain recognizable as the venue that has hosted generations of Wausau student-athletes and spectators since 1951.

5. Describe Significance of Property and Conformance to Designation Criteria (Per City of Wausau Historic Preservation Ordinance) (select all that apply)

- x Associated with broad patterns of cultural, political, economic, or social history.*
- x Associated with important persons or events in local, state, or national history.*
- x Distinguishing characteristics of an architectural type, period, or method of construction.*
- X Representative of the work of a master builder, designer, or architect.*

Provide detailed explanation:

Thom Field is significant for its association with the educational, recreational, and social history of Wausau. Constructed in 1951, the stadium reflects the post-World War II growth of the community and the increasing importance of organized school athletics within public education. For more than seventy years, Thom Field has served as the Wausau School District's primary outdoor athletic venue, hosting football games, track and field competitions, school celebrations, graduations, and community events. As a gathering place for generations of students, families, and residents, the property represents an important chapter in the social and cultural development of Wausau and remains a focal point of community identity.

The property is also significant for its association with important individuals in Wausau's history. The stadium is named for Walter H. Thom, whose leadership and fundraising efforts were

instrumental in securing support for the construction of the facility. Thom Field is further associated with George Foster, one of Wausau's most accomplished athletes, educators, and coaches, whose influence helped shape generations of student-athletes and contributed significantly to the community's athletic traditions. Since the division of the original Wausau High School into Wausau East and Wausau West High Schools, Thom Field has served as the shared home stadium for both schools and the site of the annual cross-town rivalry football game played for possession of the "Wausau Log," one of Wausau's most enduring community traditions.

Additionally, Thom Field possesses architectural significance through its association with noted Wausau architect **George Edward Foster Jr. (1910–1967)**, who designed the stadium structure. Foster was a prominent local architect responsible for several important community landmarks, including the Woodson YMCA and the Wausau Municipal Airport Administration Building. Thom Field reflects Foster's contribution to the civic and educational architecture of mid-twentieth-century Wausau and serves as a lasting example of his work. Through its associations with influential civic leaders, educational and athletic traditions, and the work of a significant local architect, Thom Field remains one of Wausau's most important historic recreational and educational resources.

N 10th St

N 13th St

Kaiser Pool
Temporarily closed

Thom Field

Bridge St

N 10th St

N 13th St

E Brid

Dekalb St

Dekalb St

N 13th St

N 10th St

N 12th St

Stark St

Stark St

Stark St

Stark St